

PRODUCT INFORMATION

Common Name	TJ-003234, TJM-2
Conjugate	Unconjugated
Synonyms	CSF;CSF2
Applications	ELISA; Flow Cyt
Recommended Dilutions	ELISA 1:5000-10000; Flow Cyt 1:100
Formulation & Reconstitution	Lyophilized from sterile PBS, pH 7.4. Normally 5 % - 8% trehalose is added as protectants before lyophilization. Please see Certificate of Analysis for specific instructions of reconstitution.
Host Species	Humanized
IgG type	Human IgG1 – kappa
Reactivity	Human
Target	GM-CSF
Uniprot ID	P04141
Description	Anti-GM-CSF(plonmarlimab biosimilar) mAb
Delivery	In Stock
Storage & Shipping	Store at -20°C to -80°C for 12 months in lyophilized form. After reconstitution, if not intended for use within a month, aliquot and store at -80°C (Avoid repeated freezing and thawing). Lyophilized proteins are shipped at ambient temperature.
Background	Research grade biosimilar. Not for use in therapeutic or diagnostic procedures for humans or animals.
Usage	Research use only



Anti-GM-CSF (plonmarlimab biosimilar) mAb ELISA
0.2 µg of Human GM-CSF, hFc tagged protein per well

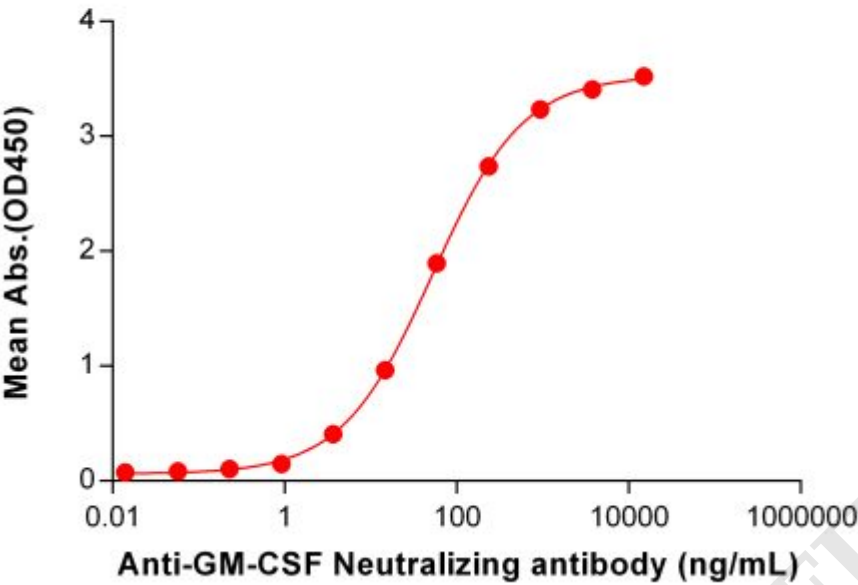


Figure 1. ELISA plate pre-coated by 2 µg/mL (100 µL/well) Human GM-CSF Protein, hFc Tag (PME100564) can bind Anti-GM-CSF Neutralizing antibody (BME100130) in a linear range of 0.92-937.50 ng/mL. In order to specifically detect BME100130, mouse anti-human Fab-specific antibody was used as detection antibody.

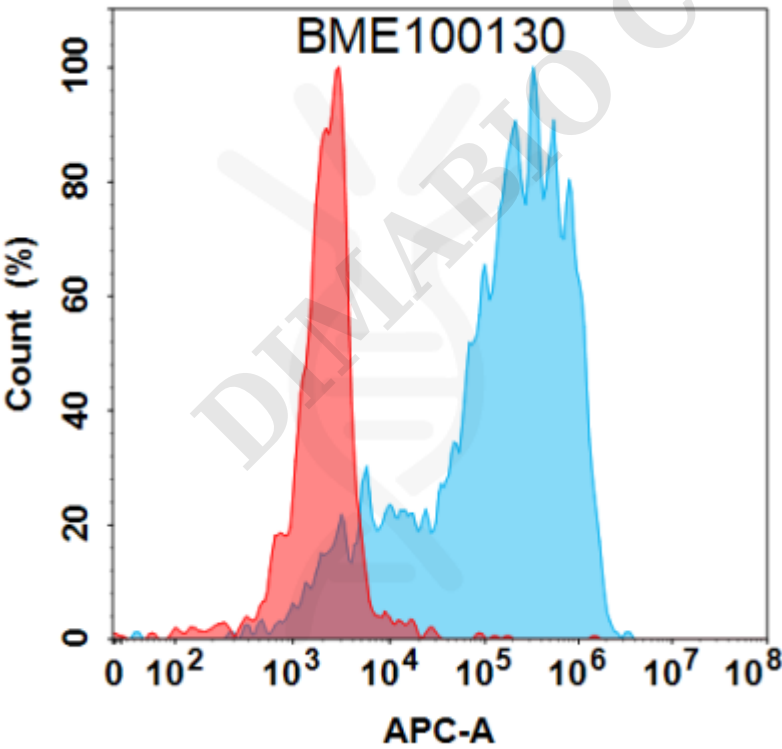


Figure 2. Flow cytometry analysis under cell membrane permeable condition with 1 µg/mL Anti-GM-CSF (plonmarlimab biosimilar) mAb (BME100130) on HEK293 cells transfected with Human GM-CSF protein (Blue histogram) or HEK293 transfected with irrelevant protein (Red histogram).

