

PRODUCT INFORMATION

|                              |                                                                                                                                                                                                                                                       |
|------------------------------|-------------------------------------------------------------------------------------------------------------------------------------------------------------------------------------------------------------------------------------------------------|
| Uniprot ID                   | P48546                                                                                                                                                                                                                                                |
| Common Name                  | AMG133                                                                                                                                                                                                                                                |
| Conjugate                    | Unconjugated                                                                                                                                                                                                                                          |
| Synonyms                     | GIP-R                                                                                                                                                                                                                                                 |
| Applications                 | ELISA, Flow Cyt                                                                                                                                                                                                                                       |
| Recommended Dilutions        | ELISA 1:5000-10000, Flow Cyt 1:100                                                                                                                                                                                                                    |
| Formulation & Reconstitution | Lyophilized from sterile PBS, pH 7.4. Normally 5 % - 8% trehalose is added as protectants before lyophilization. Please see Certificate of Analysis for specific instructions of reconstitution.                                                      |
| Host Species                 | Homo sapiens                                                                                                                                                                                                                                          |
| IgG type                     | Human IgG1(E272C,R292C,N297G,V302C) - Kappa                                                                                                                                                                                                           |
| Reactivity                   | Human                                                                                                                                                                                                                                                 |
| Target                       | GIPR                                                                                                                                                                                                                                                  |
| Description                  | Anti-GIPR(maridebart biosimilar) mAb                                                                                                                                                                                                                  |
| Delivery                     | In Stock                                                                                                                                                                                                                                              |
| Storage & Shipping           | Store at -20°C to -80°C for 12 months in lyophilized form. After reconstitution, if not intended for use within a month, aliquot and store at -80°C (Avoid repeated freezing and thawing). Lyophilized antibodies are shipped at ambient temperature. |
| Background                   | Research grade biosimilar. Not for use in therapeutic or diagnostic procedures for humans or animals.                                                                                                                                                 |
| Usage                        | Research use only                                                                                                                                                                                                                                     |



**Anti-GIPR(maridebart biosimilar) mAb ELISA**  
0.2  $\mu$ g of Human GIPR , hFc tagged protein per well

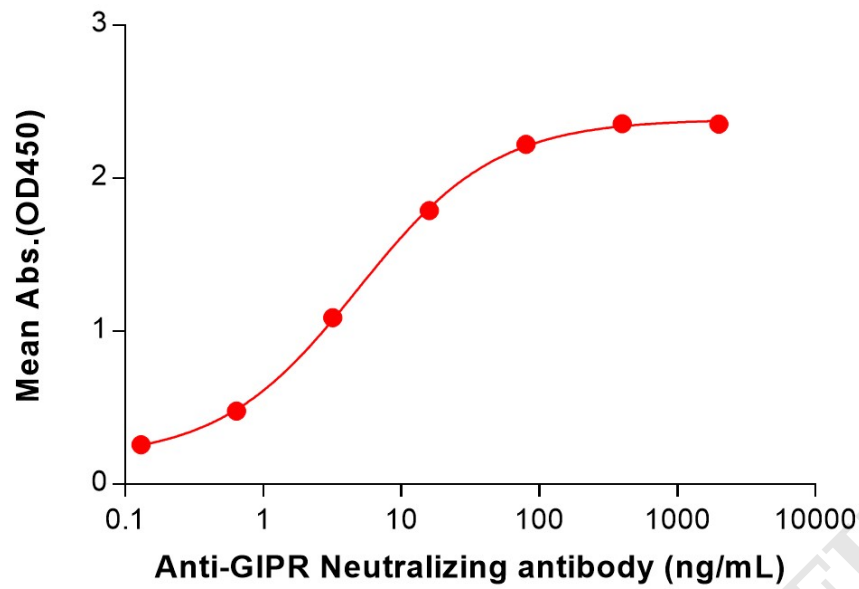


Figure 1. ELISA plate pre-coated by 2  $\mu$ g/mL (100  $\mu$ L/well) Human GIPR Protein, hFc Tag (PME101267) can bind Anti-GIPR(maridebart biosimilar) mAb (BME100209) in a linear range of 0.64-80 ng/mL. In order to specifically detect BME100209, mouse anti-human Fab-specific antibody was used as detection antibody.

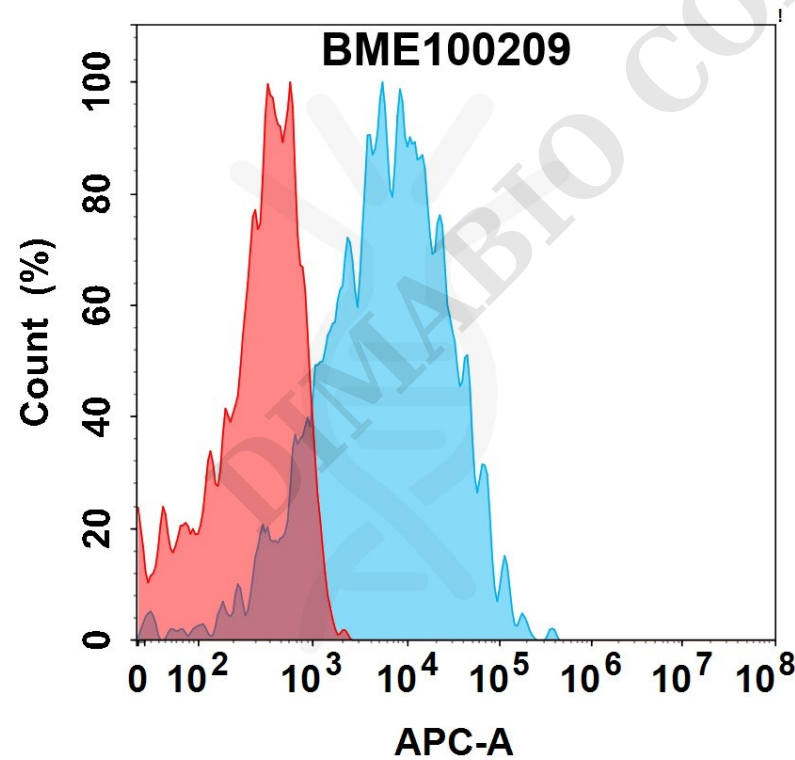


Figure 2. Flow cytometry analysis with 1 $\mu$ g/mL Anti-GIPR(maridebart biosimilar) mAb (BME100209) on HEK293 cells transfected with Human GIPR protein (Blue histogram) or HEK293 transfected with irrelevant protein (Red histogram).

