

PRODUCT INFORMATION

Common Name	M3,MORAb-003
Conjugate	Unconjugated
Synonyms	FBP;FOLR;FRalpha;NCFTD
Applications	ELISA, Flow Cyt
Recommended Dilutions	ELISA 1:5000-10000, Flow Cyt 1:100
Formulation & Reconstitution	Lyophilized from sterile PBS, pH 7.4. Normally 5 % - 8% trehalose is added as protectants before lyophilization. Please see Certificate of Analysis for specific instructions.
Host Species	Humanized
IgG type	Human IgG1(E356D,M358L) - kappa
Reactivity	Human
Target	FOLR1
Uniprot ID	P15328
Description	Anti-FOLR1(farletuzumab biosimilar) mAb
Delivery	In Stock
Storage & Shipping	Store at -20°C to -80°C for 12 months in lyophilized form. After reconstitution, if not intended for use within a month, aliquot and store at -80°C (Avoid repeated freezing and thawing). Lyophilized proteins are shipped at ambient temperature.
Background	Research grade biosimilar. Not for use in therapeutic or diagnostic procedures for humans or animals.
Usage	Research use only



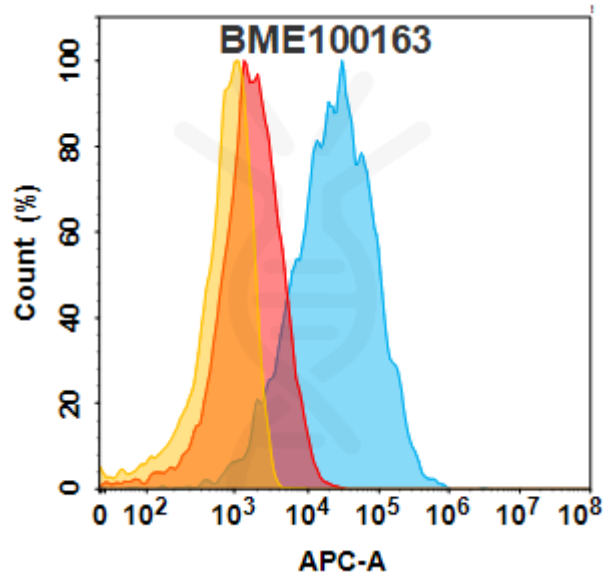


Figure 1. FOLR1 protein is highly expressed on the surface of HEK293 cell membrane. Flow cytometry analysis with 1μg/mL Anti-FOLR1(farletuzumab biosimilar) mAb (BME100163) on HEK293 cells transfected with human FOLR1 (Blue histogram) or HEK293 transfected with irrelevant protein (Red histogram),and Isotype antibody on HEK293 transfected with irrelevant protein (Orange histogram)

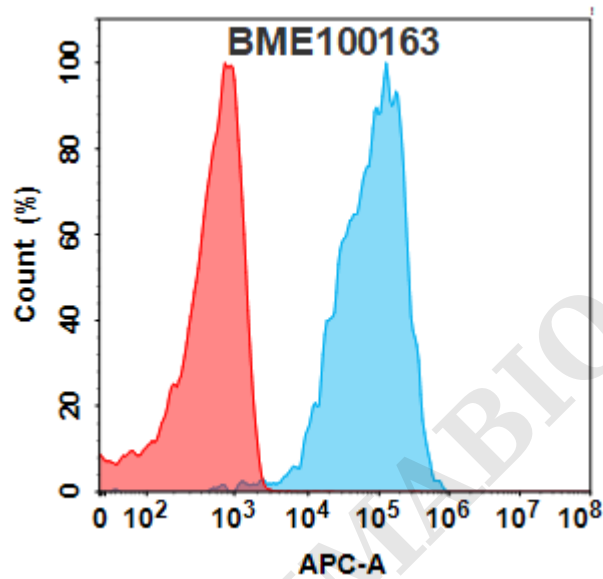


Figure 2. FOLR1 protein is highly expressed on the surface of HeLa cell membrane. Flow cytometry analysis with 1μg/mL Anti-FOLR1(farletuzumab biosimilar) mAb (BME100163) on HeLa cells (Blue histogram) or isotype control mAb (Red histogram) on HeLa cells.



Anti-FOLR1(farletuzumab biosimilar) mAb ELISA
0.2 µg of Human FOLR1, His tagged protein per well

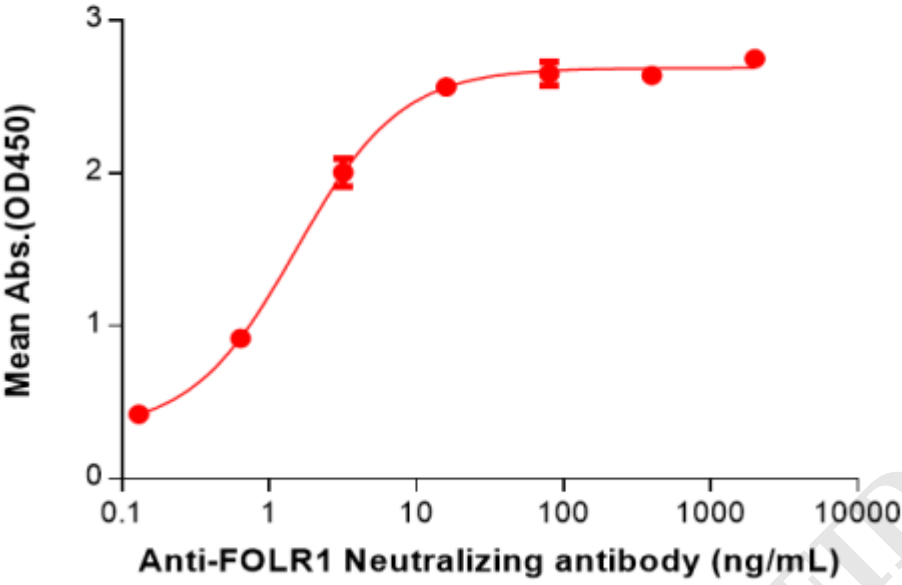


Figure 3. ELISA plate pre-coated by 2 µg/mL (100 µL/well) Human FOLR1 Protein, His Tag(PME100249) can bind Anti-FOLR1(farletuzumab biosimilar) mAb(BME100163) in a linear range of 0.64–16 ng/mL.

