

PRODUCT INFORMATION

Clone ID	18A3
Target	FOLR1
Synonyms	FBP;FOLR;FRalpha
Host Species	Rabbit
Description	Anti-FOLR1 antibody(18A3), IgG1 Chimeric mAb
Delivery	In Stock
Uniprot ID	P15328
IgG type	Rabbit/Human Fc chimeric IgG1
Clonality	Monoclonal
Reactivity	Human
Applications	WB
Recommended Dilutions	WB 1:1000
Purification	Purified from cell culture supernatant by affinity chromatography
Formulation & Reconstitution	Lyophilized from sterile PBS, pH 7.4. Normally 5 % - 8% trehalose is added as protectants before lyophilization. Please see Certificate of Analysis for specific instructions of reconstitution.
Storage & Shipping	Store at -20°C to -80°C for 12 months in lyophilized form. After reconstitution, if not intended for use within a month, aliquot and store at -80°C (Avoid repeated freezing and thawing). Lyophilized proteins are shipped at ambient temperature.
Background	The protein encoded by this gene is a member of the folate receptor family. Members of this gene family bind folic acid and its reduced derivatives, and transport 5-methyltetrahydrofolate into cells. This gene product is a secreted protein that either anchors to membranes via a glycosyl-phosphatidylinositol linkage or exists in a soluble form. Mutations in this gene have been associated with neurodegeneration due to cerebral folate transport deficiency. Due to the presence of two promoters, multiple transcription start sites, and alternative splicing, multiple transcript variants encoding the same protein have been found for this gene.
Usage	Research use only
Conjugate	Unconjugated
DIMA Disclaimer	All DIMA recombinant antibodies are genuinely generated by DIMA Biotech. They are all under patent application. Any protein sequencing or reverse engineering attempt is prohibited. We are actively scr





Figure 1. Anti-FOLR1 antibody (SKU# DMC100585) at 1/1000 dilution
Lane : HeLa (human cervical adenocarcinoma epithelial cell), whole cell lysate
Secondary : Goat Anti-Rabbit IgG H&L (HRP) at 1/5000 dilution
band size: 38 kDa

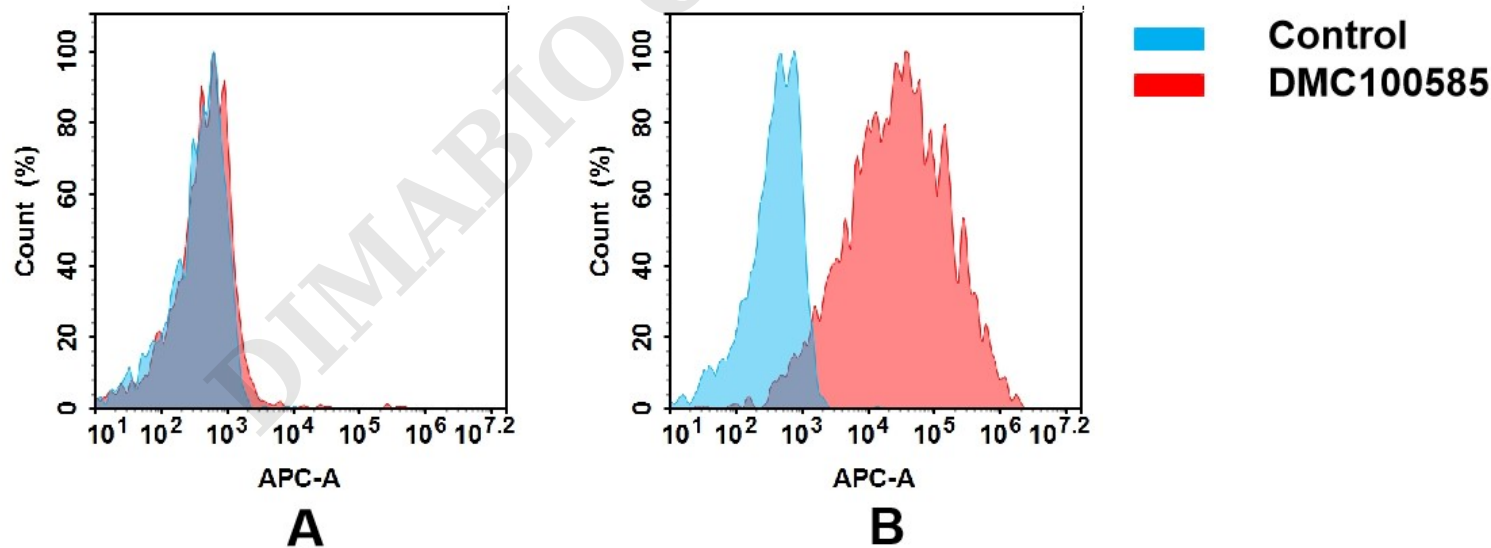


Figure 2. Flow cytometry analysis of antigen binding of anti-human FOLR1 mAb(DMC100585).
(A) DMC100585 does not bind to K562 cells that do not express FOLR1.
(B) A clear peak shift of DMC100585 was seen compared to the control when incubated with FOLR1-expressing HeLa cells, indicating strong binding of DMC100585 to FOLR1. Antibodies were incubated at 5 µg/mL.

