

PRODUCT INFORMATION

| | |
|------------------------------|--|
| Clone ID | 1A11 |
| Target | FCRL5 |
| Synonyms | CD307; FCRH5; IRTA2; BXMAS1; CD307e; PRO820 |
| Host Species | Rabbit |
| Description | Anti-FCRL5 antibody(1A11), Rabbit mAb |
| Delivery | In Stock |
| Uniprot ID | Q96RD9 |
| IgG type | Rabbit IgG |
| Clonality | Monoclonal |
| Reactivity | Human |
| Applications | IHC |
| Recommended Dilutions | IHC 1:100 |
| Purification | Purified from cell culture supernatant by affinity chromatography |
| Formulation & Reconstitution | Lyophilized from sterile PBS, pH 7.4. Normally 5 % - 8% trehalose is added as protectants before lyophilization. Please see Certificate of Analysis for specific instructions of reconstitution. |
| Storage&Shipping | Store at -20°C to -80°C for 12 months in lyophilized form. After reconstitution, if not intended for use within a month, aliquot and store at -80°C (Avoid repeated freezing and thawing). Lyophilized proteins are shipped at ambient temperature. |
| Background | This gene encodes a member of the immunoglobulin receptor superfamily and the Fc-receptor like family. This gene and several other Fc receptor-like gene members are clustered on the long arm of chromosome 1. The encoded protein is a single-pass type I membrane protein and contains 8 immunoglobulin-like C2-type domains. This gene is implicated in B cell development and lymphomagenesis. Alternatively spliced transcript variants encoding different isoforms have been identified. [provided by RefSeq, Sep 2010] |
| Usage | Research use only |
| Conjugate | Unconjugated |
| DIMA Disclaimer | All DIMA recombinant antibodies are genuinely generated by DIMA Biotech. They are all under patent application. Any protein sequencing or reverse engineering attempt is prohibited. We are actively scr |



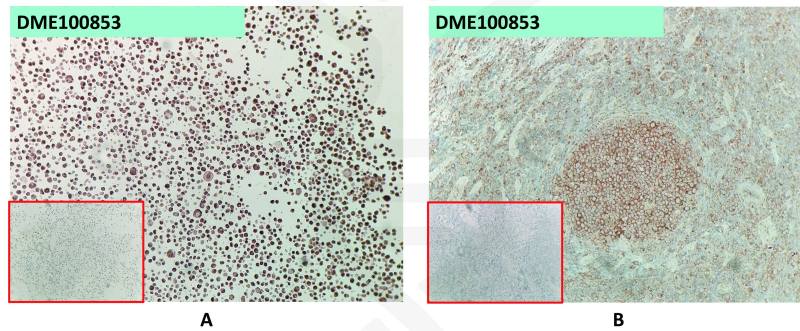


Figure 1.A. DME100853 at 10µg/ml staining FCRL5 in MM.1S-FCRL5 cells by IHC (SKU# DME100853);B. DME100853 at 10µg/ml staining FCRL5 in human tonsil tissue by IHC (SKU# DME100853)

