

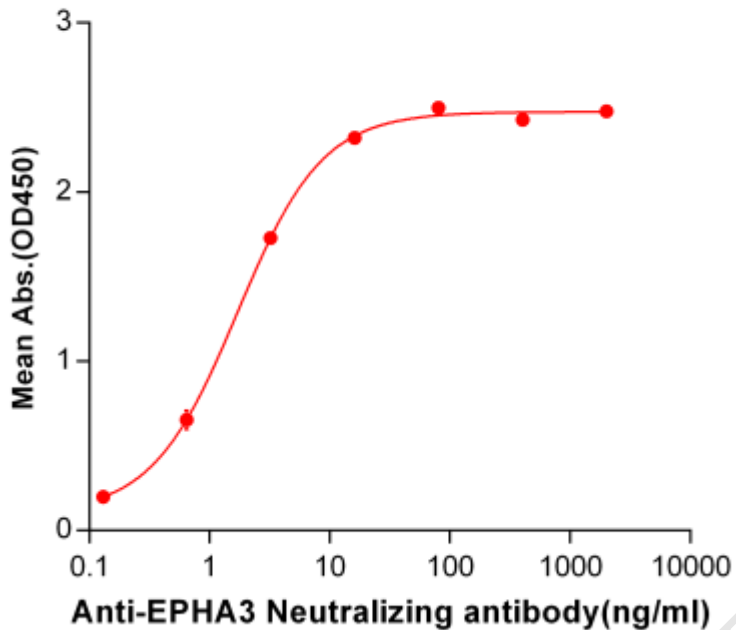
**PRODUCT INFORMATION**

<b>Common Name</b>	KB-004, KB004
<b>Conjugate</b>	Unconjugated
<b>Synonyms</b>	TYRO4;HEK4;ETK1;ETK;EK4;HEK
<b>Applications</b>	ELISA; Flow Cyt
<b>Endotoxin</b>	Less than 1.0 EU/ $\mu$ g by the LAL method. For <1 EU/mg requirements, please contact us for customization.
<b>Recommended Dilutions</b>	ELISA 1:5000-10000; Flow Cyt 1:100
<b>Formulation &amp; Reconstitution</b>	Lyophilized from sterile PBS, pH 7.4. Normally 5% - 8% trehalose is added as protectants before lyophilization. Please see Certificate of Analysis for specific instructions of reconstitution.
<b>Host Species</b>	Humanized
<b>IgG type</b>	Human IgG1 - kappa
<b>Reactivity</b>	Human
<b>Target</b>	EPHA3
<b>Uniprot ID</b>	P29320
<b>Description</b>	Anti-EPHA3 (ifabotuzumab biosimilar) mAb
<b>Delivery</b>	In Stock
<b>Storage&amp;Shipping</b>	Store at -20°C to -80°C for 12 months in lyophilized form. After reconstitution, if not intended for use within a month, aliquot and store at -80°C (Avoid repeated freezing and thawing). Lyophilized proteins are shipped at ambient temperature.
<b>Background</b>	Research grade biosimilar. Not for use in therapeutic or diagnostic procedures for humans or animals.
<b>Usage</b>	Research use only

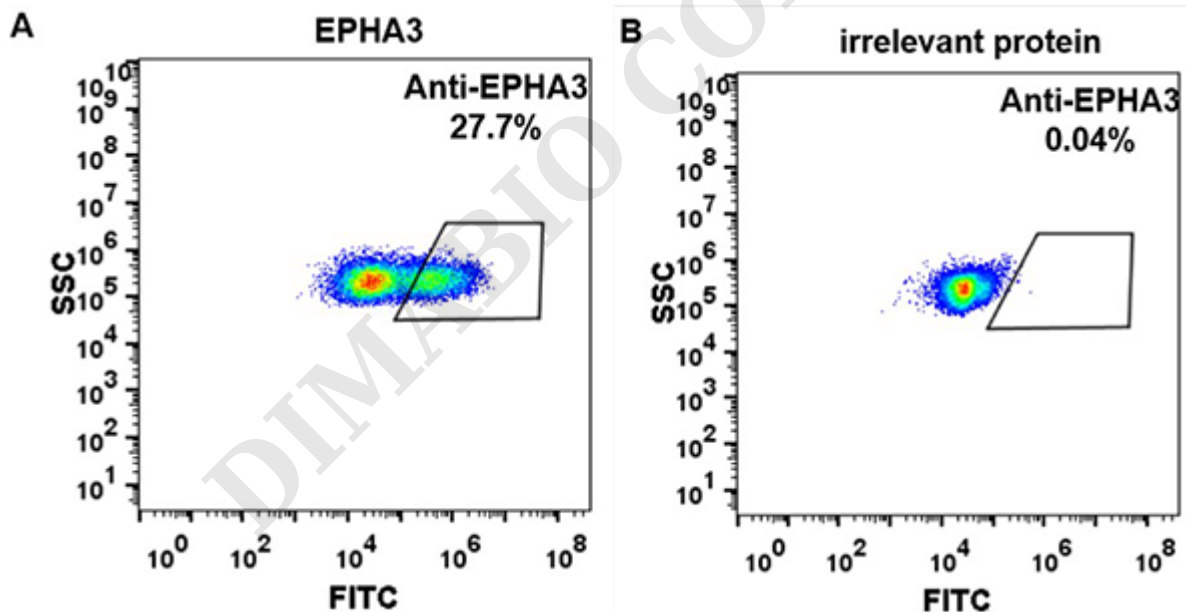


## Anti-EPHA3 (ifabotuzumab biosimilar) mAb ELISA

0.2  $\mu$ g of EPHA3, mFc-His Tagged protein per well



**Figure 1.** ELISA plate pre-coated by 2  $\mu$ g/ml (100  $\mu$ l/well) Human EPHA3, mFc-His tagged protein (Igetskuurl sku="PME100045") can bind Anti-EPHA3 Neutralizing antibody in a linear range of 0.13-16.0 ng/ml.



**Figure 2.** HEK293 cell line transfected with irrelevant protein (**B**) and human EPHA3 protein (**A**) were surface stained with anti-EPHA3 neutralizing antibody 1 $\mu$ g/ml (ifabotuzumab) followed by Alexa 488-conjugated anti-human IgG secondary antibody.

