

PRODUCT INFORMATION

Clone ID	DM130
Target	EGFR
Synonyms	EGFR;ERBB;ERBB1;HER1;PIG61;mENA
Host Species	Rabbit
Description	Anti-EGFR antibody(DM130); Rabbit mAb
Delivery	In Stock
Uniprot ID	P00533
IgG type	Rabbit IgG
Clonality	Monoclonal
Reactivity	Human
Applications	ELISA; Flow Cyt
Recommended Dilutions	ELISA 1:5000-10000; Flow Cyt 1:100
Purification	Purified from cell culture supernatant by affinity chromatography
Formulation & Reconstitution	Lyophilized from sterile PBS, pH 7.4. Normally 5 % - 8% trehalose is added as protectants before lyophilization. Please see Certificate of Analysis for specific instructions of reconstitution.
Storage & Shipping	Store at -20°C to -80°C for 12 months in lyophilized form. After reconstitution, if not intended for use within a month, aliquot and store at -80°C (Avoid repeated freezing and thawing). Lyophilized proteins are shipped at ambient temperature.
Background	The protein encoded by this gene is a transmembrane glycoprotein that is a member of the protein kinase superfamily. This protein is a receptor for members of the epidermal growth factor family. EGFR is a cell surface protein that binds to epidermal growth factor. Binding of the protein to a ligand induces receptor dimerization and tyrosine autophosphorylation and leads to cell proliferation. Mutations in this gene are associated with lung cancer.
Usage	Research use only
Conjugate	Unconjugated
DIMA Disclaimer	All DIMA recombinant antibodies are genuinely generated by DIMA Biotech. They are all under patent application. Any protein sequencing or reverse engineering attempt is prohibited. We are actively scr



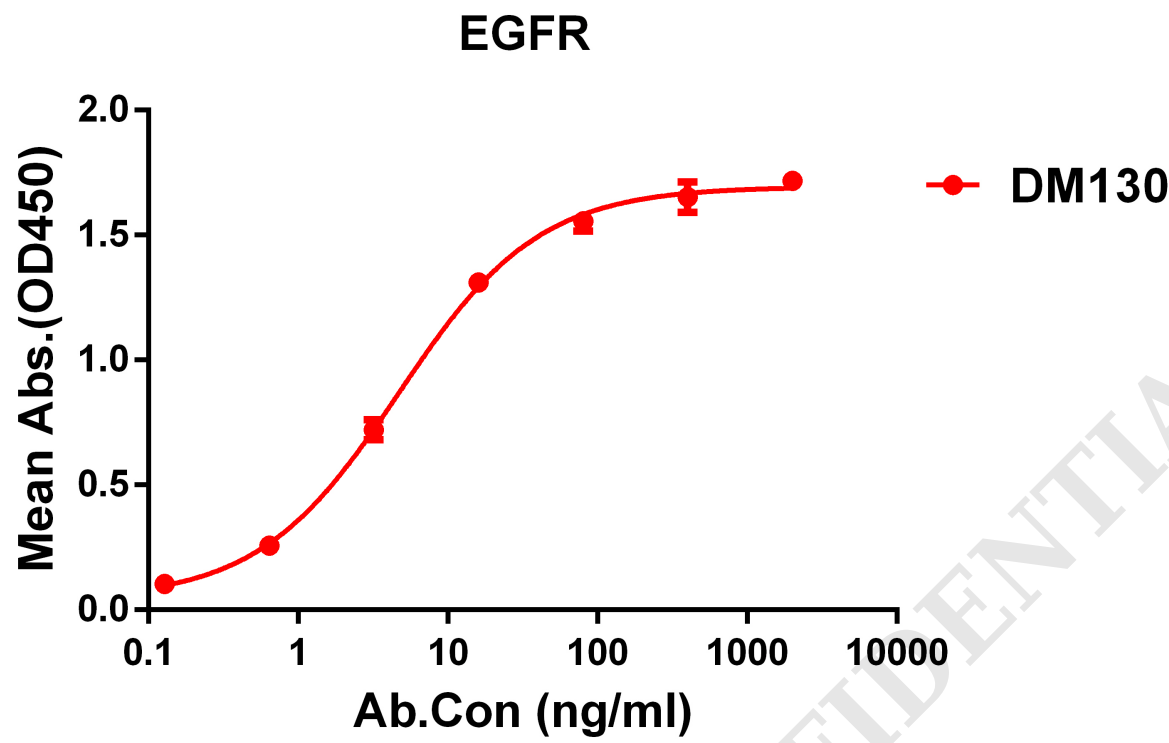


Figure 1. ELISA plate pre-coated by 1 µg/ml (100 µl/well) Human EGFR protein, His tagged protein PME100099 can bind Rabbit anti-EGFR monoclonal antibody (clone: DM130) in a linear range of 0.06-12 ng/ml.

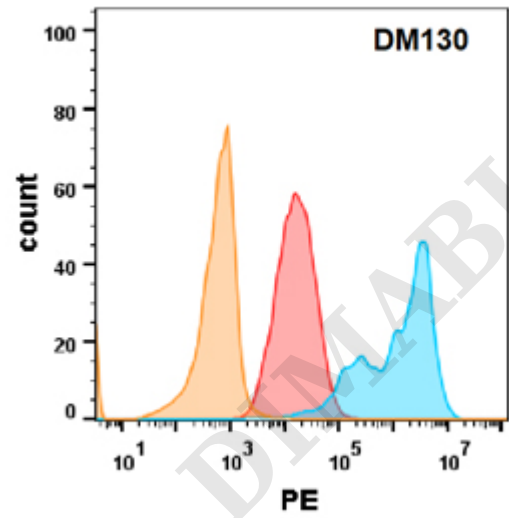


Figure 2. EGFR protein is highly expressed on the surface of HEK293 cell membrane. Flow cytometry analysis with Anti-EGFR (DM130) on HEK293 cells transfected with human EGFR(Blue histogram) or HEK293 transfected with irrelevant protein (Red histogram),and Isotype antibody on HEK293 transfected with irrelevant protein(Orange histogram)



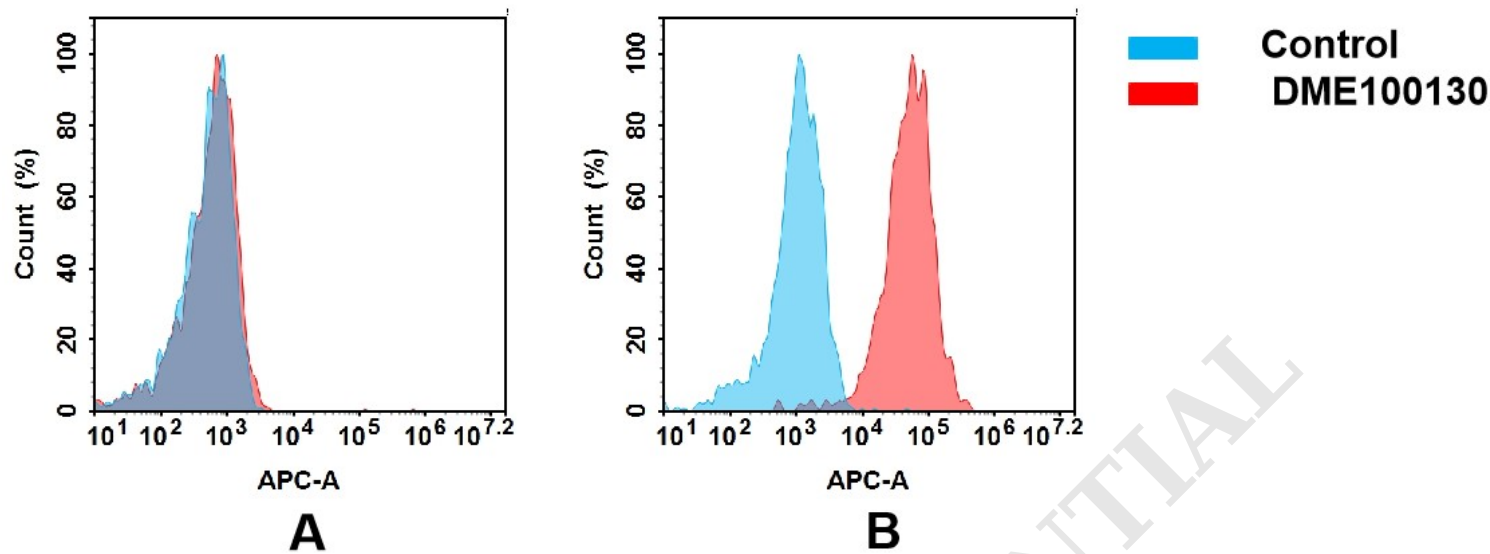


Figure 3. Flow cytometry analysis of antigen binding of rabbit anti-human EGFR mAb(DME100130).
(A) DME100130 does not bind to CHO-S cells that do not express EGFR.
(B) A clear peak shift of DME100130 was seen compared to the control when incubated with EGFR-expressing SNU-5 cells, indicating strong binding of DME100130 to EGFR. Antibodies were incubated at 5 µg/mL.

