

PRODUCT INFORMATION

Clone ID	1A7
Target	ECSCR
Synonyms	ARIA;ECSM2
Host Species	Rabbit
Description	Anti-ECSCR antibody(1A7), Rabbit mAb
Delivery	In Stock
Uniprot ID	Q19T08
IgG type	Rabbit IgG
Clonality	Monoclonal
Reactivity	Human
Applications	Flow Cyt
Recommended Dilutions	Flow Cyt 1/100
Purification	Purified from cell culture supernatant by affinity chromatography
Formulation & Reconstitution	Lyophilized from sterile PBS, pH 7.4. Normally 5 % - 8% trehalose is added as protectants before lyophilization. Please see Certificate of Analysis for specific instructions of reconstitution.
Storage&Shipping	Store at -20°C to -80°C for 12 months in lyophilized form. After reconstitution, if not intended for use within a month, aliquot and store at -80°C (Avoid repeated freezing and thawing).
Background	The protein encoded by this gene is primarily found in endothelial cells and blood vessels, where it is involved in cell shape changes and EGF-induced cell migration. It can enhance the activation of vascular endothelial growth factor receptor-2/kinase insert domain receptor and also promote the proteolysis of internalized kinase insert domain receptor. This gene may play a role in angiogenesis-related diseases. Alternative splicing results in multiple transcript variants. [provided by RefSeq, Jun 2014]
Usage	Research use only
Conjugate	Unconjugated



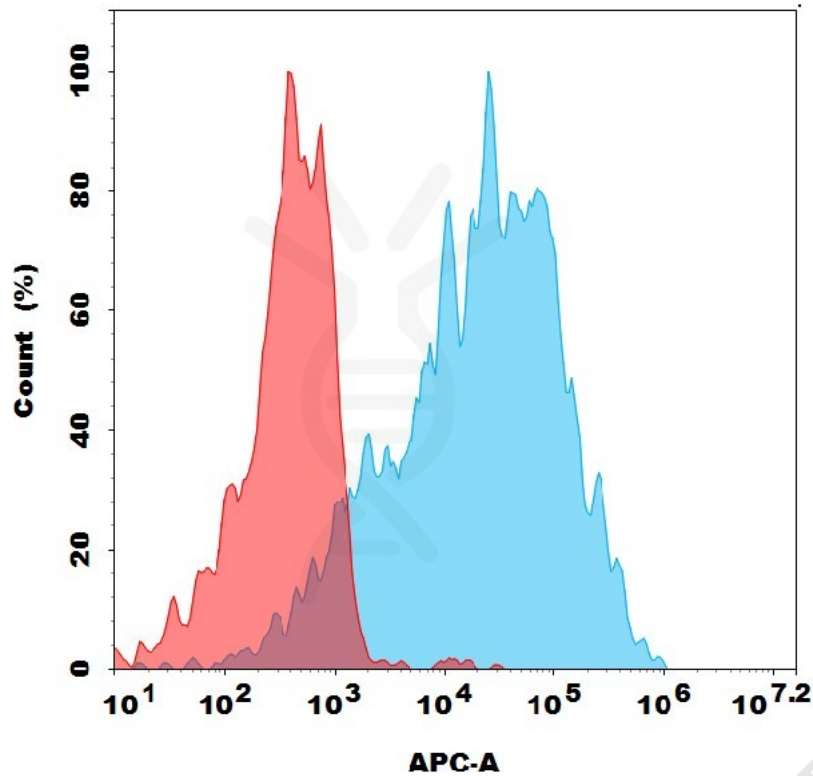


Figure 1. Flow cytometry analysis with 2 μ g/mL Anti-ECSCR (1A7) mAb on HEK293 cells transfected with human ECSCR (Blue histogram) or HEK293 transfected with irrelevant protein (Red histogram).

