

PRODUCT INFORMATION

Common Name	E-6011
Conjugate	Unconjugated
Synonyms	FKN, NTT, SCYD1, A-152E5.2
Applications	ELISA, Flow Cyt
Recommended Dilutions	ELISA 1:5000-10000, Flow Cyt 1:100
Formulation & Reconstitution	Lyophilized from sterile PBS, pH 7.4. Normally 5 % - 8% trehalose is added as protectants before lyophilization. Please see Certificate of Analysis for specific instructions of reconstitution.
Host Species	Chimeric Humanized
IgG type	Human IgG2(V235A,G237A,S378A) - Kappa
Reactivity	Human
Target	CX3CL1
Uniprot ID	P78423
Description	Anti-CX3CL1(quetmolimab biosimilar) mAb
Delivery	In Stock
Storage&Shipping	Store at -20°C to -80°C for 12 months in lyophilized form. After reconstitution, if not intended for use within a month, aliquot and store at -80°C (Avoid repeated freezing and thawing). Lyophilized antibodies are shipped at ambient temperature.
Background	Research grade biosimilar. Not for use in therapeutic or diagnostic procedures for humans or animals.
Usage	Research use only



Anti-CX3CL1(quetmolimab biosimilar) mAb ELISA
0.2 μ g of Human CX3CL1, His tagged protein per well

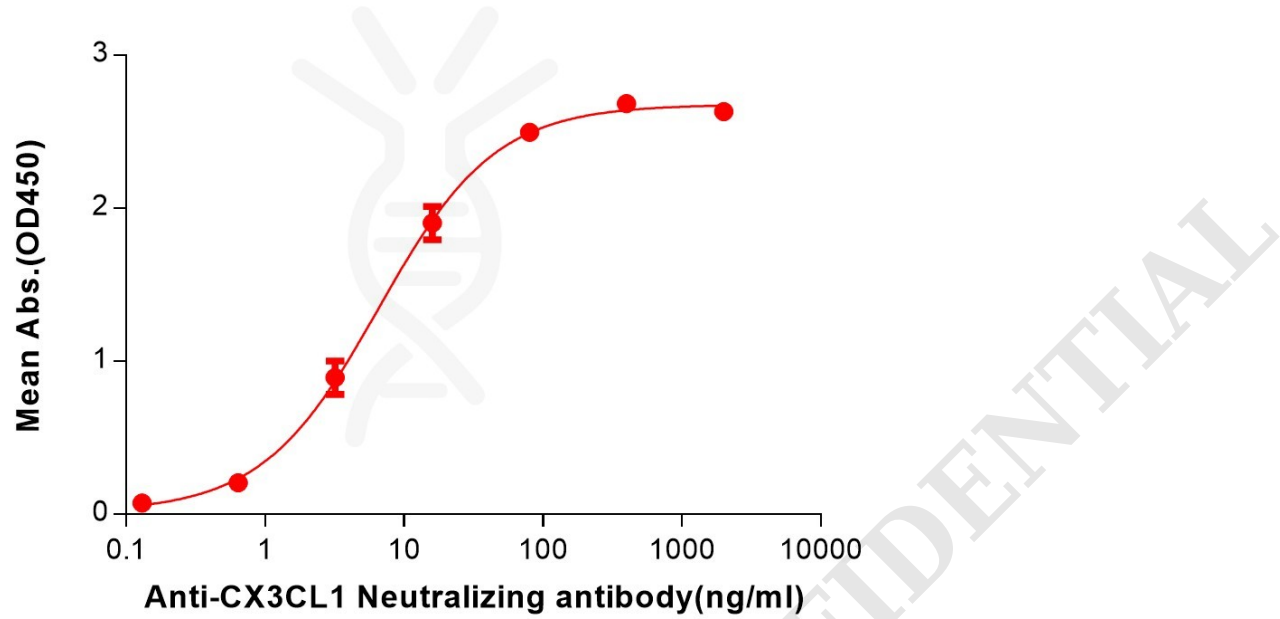


Figure 1. ELISA plate pre-coated by 2 μ g/mL (100 μ L/well) Human CX3CL1 Protein, His Tag (PME101343) can bind Anti-CX3CL1(quetmolimab biosimilar) mAb (BME100259) in a linear range of 0.64–80 ng/mL.

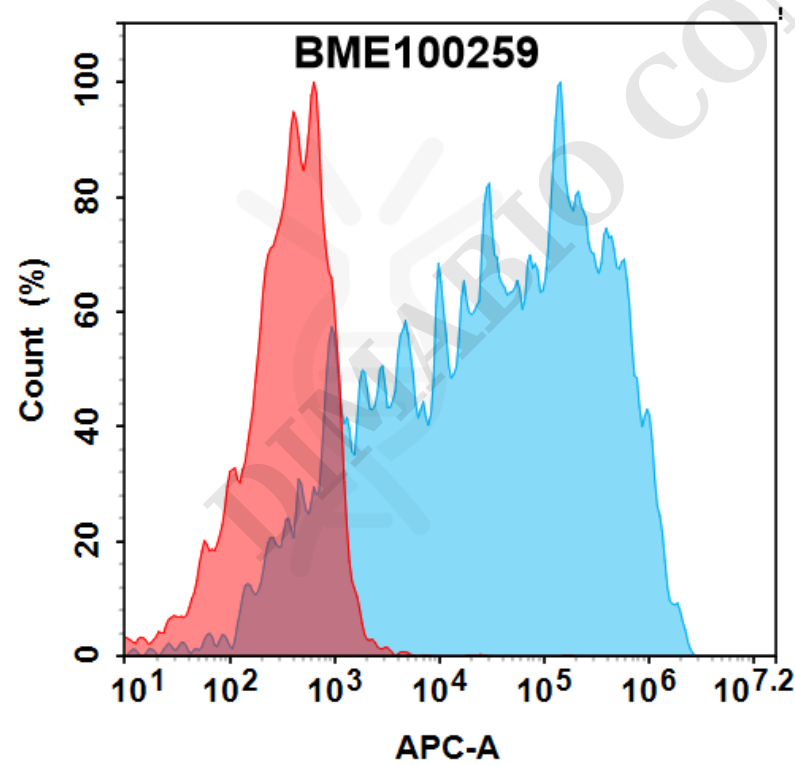


Figure 2. Flow cytometry analysis with 0.5 μ g/ml Anti-CX3CL1(quetmolimab biosimilar) mAb (BME100259) on HEK293 cells transfected with human CX3CL1 (Blue histogram) or HEK293 transfected with irrelevant protein (Red histogram).

