

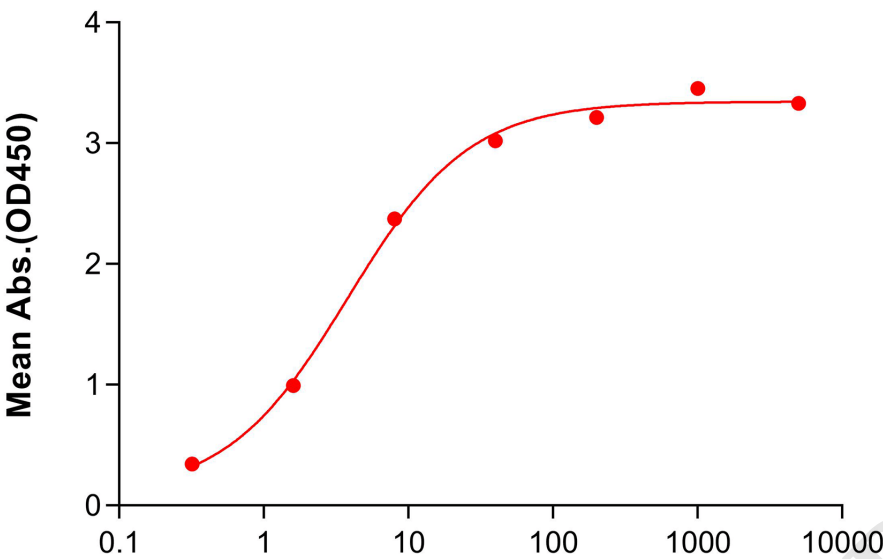
PRODUCT INFORMATION

Uniprot ID	P16410
Common Name	AGEN-1181
Conjugate	Unconjugated
Synonyms	CTLA4, CD152
Applications	ELISA, Flow Cyt
Recommended Dilutions	ELISA 1:5000-10000, Flow Cyt 1:100
Formulation & Reconstitution	Lyophilized from sterile PBS, pH 7.4. Normally 5 % - 8% trehalose is added as protectants before lyophilization. Please see Certificate of Analysis for specific instructions of reconstitution.
Host Species	Homo sapiens
IgG type	Human IgG1(K214R,S239D,A330L,I332E) - kappa
Reactivity	Human
Target	CTLA-4
Description	Anti-CTLA-4(botensilimab biosimilar) mAb
Delivery	In Stock
Storage & Shipping	Store at -20°C to -80°C for 12 months in lyophilized form. After reconstitution, if not intended for use within a month, aliquot and store at -80°C (Avoid repeated freezing and thawing). Lyophilized antibodies are shipped at ambient temperature.
Background	Research grade biosimilar. Not for use in therapeutic or diagnostic procedures for humans or animals.
Usage	Research use only



Anti-CTLA-4(botensilimab biosimilar) mAb ELISA

0.2 µg of Human CTLA-4, mFc-His tagged protein per well



Anti-CTLA-4(botensilimab biosimilar) mAb (ng/mL)

Figure 1. ELISA plate pre-coated by 2 µg/mL (100 µL/well) Human CDH17 Protein, His Tag (PME100801) can bind Anti-CDH17 (MRG007 biosimilar) mAb (BME100289) in a linear range of 1.6-8.0 ng/mL .

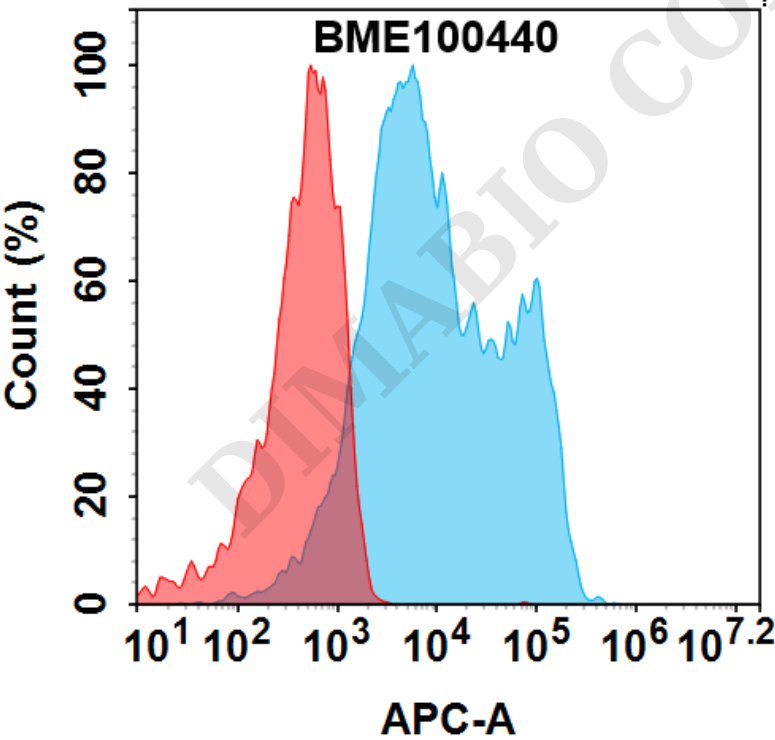


Figure 2. Flow cytometry analysis with 0.5µg/ml Anti-CTLA-4(botensilimab biosimilar) mAb (BME100440) on HEK293 cells transfected with human CTLA-4 (Blue histogram) or HEK293 transfected with irrelevant protein (Red histogram).

