

PRODUCT INFORMATION

| | |
|------------------------------|--|
| Clone ID | 1A5 |
| Target | CLEC5A |
| Synonyms | CLECSF5;MDL-1;MDL1 |
| Host Species | Rabbit |
| Description | Anti-CLEC5A antibody(1A5), IgG1 Chimeric mAb |
| Delivery | In Stock |
| Uniprot ID | Q9NY25 |
| IgG type | Rabbit/Human Fc chimeric IgG1 |
| Clonality | Monoclonal |
| Reactivity | Human |
| Applications | Flow Cyt |
| Recommended Dilutions | Flow Cyt 1/100 |
| Purification | Purified from cell culture supernatant by affinity chromatography |
| Formulation & Reconstitution | Powder |
| Storage&Shipping | Store at -20°C to -80°C for 12 months in lyophilized form. After reconstitution, if not intended for use within a month, aliquot and store at -80°C (Avoid repeated freezing and thawing). |
| Background | This gene encodes a member of the C-type lectin/C-type lectin-like domain (CTL/CTLD) superfamily. Members of this family share a common protein fold and have diverse functions, such as cell adhesion, cell-cell signalling, glycoprotein turnover, and roles in inflammation and immune response. The encoded type II transmembrane protein interacts with dnax-activation protein 12 and may play a role in cell activation. Alternative splice variants have been described but their full-length sequence has not been determined. [provided by RefSeq, Jul 2008] |
| Usage | Research use only |
| Conjugate | Unconjugated |



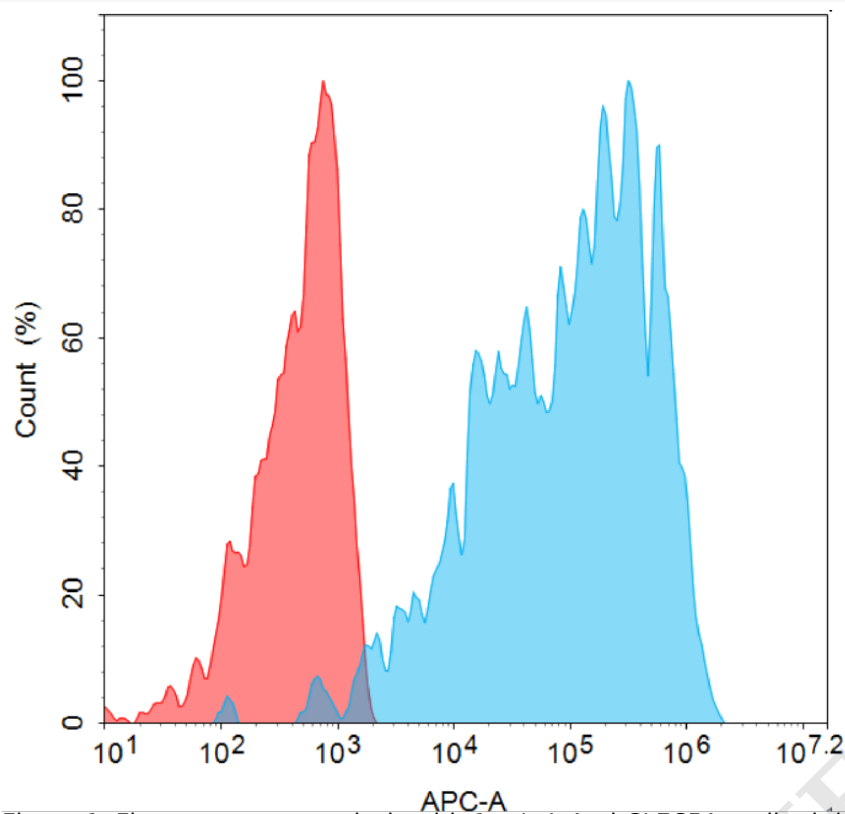


Figure 1. Flow cytometry analysis with 1 μ g/mL Anti-CLEC5A antibody(1A5) mAb on HEK293 cells transfected with human CLEC5A (Blue histogram) or HEK293 transfected with irrelevant protein (Red histogram).

