

PRODUCT INFORMATION

Common Name	BIIB 059, BIIB-059, BIIB059
Conjugate	Unconjugated
Synonyms	BDCA-2;CD303
Applications	ELISA; Flow Cyt
Recommended Dilutions	ELISA 1:5000-10000; Flow Cyt 1:100
Formulation & Reconstitution	Lyophilized from sterile PBS, pH 7.4. Normally 5 % - 8% trehalose is added as protectants before lyophilization. Please see Certificate of Analysis for specific instructions of reconstitution.
Host Species	Humanized
IgG type	Human IgG1(E356D,M358L) - kappa
Reactivity	Human
Target	CLEC4C
Uniprot ID	Q8WTT0
Description	Anti-CLEC4C (litifilimab biosimilar) mAb
Delivery	In Stock
Storage & Shipping	Store at -20°C to -80°C for 12 months in lyophilized form. After reconstitution, if not intended for use within a month, aliquot and store at -80°C (Avoid repeated freezing and thawing). Lyophilized proteins are shipped at ambient temperature.
Background	Research grade biosimilar. Not for use in therapeutic or diagnostic procedures for humans or animals.
Usage	Research use only
DIMA Disclaimer	All DIMA recombinant antibodies are genuinely generated by DIMA Biotech. They are all under patent application. Any protein sequencing or reverse engineering attempt is prohibited. We are actively scrutinizing all patent application to ensure no IP infringement.



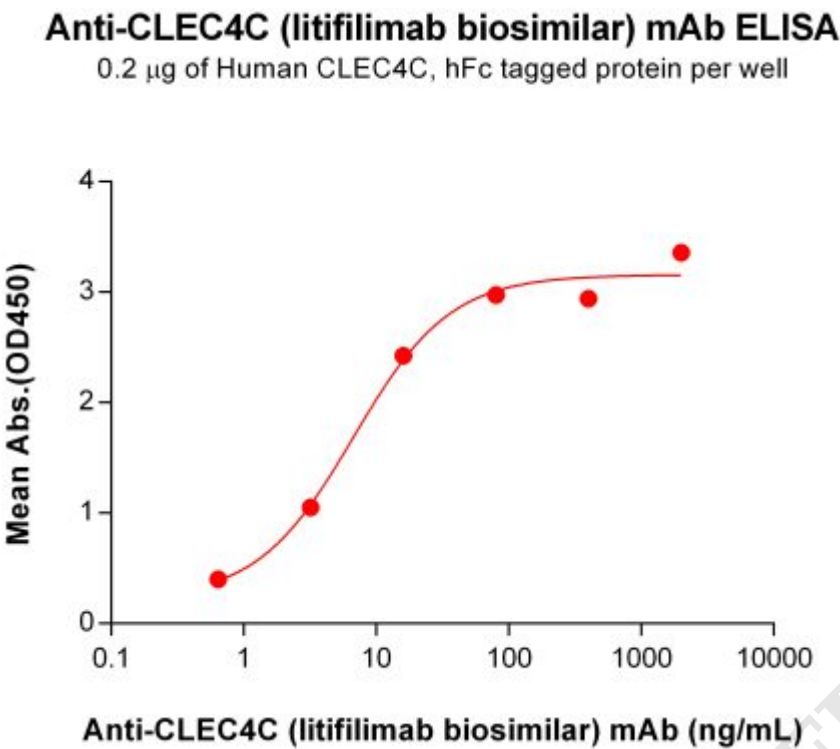


Figure 1. ELISA plate pre-coated by 2 μ g/mL (100 μ L/well) Human CLEC4C Protein, hFc Tag (PME100756) can bind Anti-CLEC4C (litifilimab biosimilar) mAb (BME100155) in a linear range of 0.64-80.00 ng/mL. In order to specifically detect BME100155, mouse anti-human Fab-specific antibody was used as detection antibody.

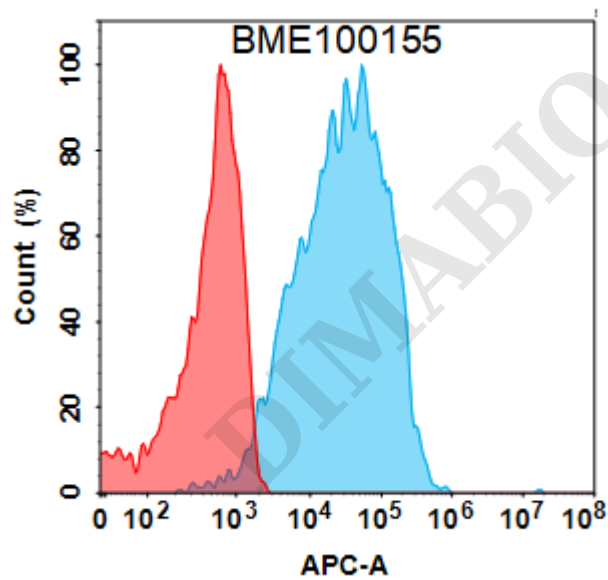


Figure 2. Flow cytometry analysis with 1 μ g/mL Anti-CLEC4C (litifilimab biosimilar) mAb (BME100155) on Expi293 cells transfected with Human CLEC4C protein (Blue histogram) or Expi293 transfected with irrelevant protein (Red histogram).

