

PRODUCT INFORMATION

Clone ID	DM165
Target	CLEC12A
Synonyms	CLEC12A;MICL;CLL-1;CLL1;DCAL2;DCAL-2;CD371
Host Species	Rabbit
Description	Anti-CLEC12A antibody(DM165); Rabbit mAb
Delivery	In Stock
Uniprot ID	Q5QGZ9
IgG type	Rabbit IgG
Clonality	Monoclonal
Reactivity	Human
Applications	ELISA; Flow Cyt
Recommended Dilutions	ELISA 1:5000-10000; Flow Cyt 1:100
Purification	Purified from cell culture supernatant by affinity chromatography
Formulation & Reconstitution	Lyophilized from sterile PBS, pH 7.4. Normally 5 % - 8% trehalose is added as protectants before lyophilization. Please see Certificate of Analysis for specific instructions of reconstitution.
Storage&Shipping	Store at -20°C to -80°C for 12 months in lyophilized form. After reconstitution, if not intended for use within a month, aliquot and store at -80°C (Avoid repeated freezing and thawing). Lyophilized proteins are shipped at ambient temperature.
Background	This gene encodes a member of the C-type lectin:C-type lectin-like domain (CTL:CTLD) superfamily. Members of this family share a common protein fold and have diverse functions; such as cell adhesion; cell-cell signaling; glycoprotein turnover; and roles in inflammation and immune response. The protein encoded by this gene is a negative regulator of granulocyte and monocyte function. Several alternatively spliced transcript variants of this gene have been described; but the full-length nature of some of these variants has not been determined. This gene is closely linked to other CTL:CTLD superfamily members in the natural killer gene complex region on chromosome 12p13.
Usage	Research use only
Conjugate	Unconjugated
DIMA Disclaimer	All DIMA recombinant antibodies are genuinely generated by DIMA Biotech. They are all under patent application. Any protein sequencing or reverse engineering attempt is prohibited. We are actively scr



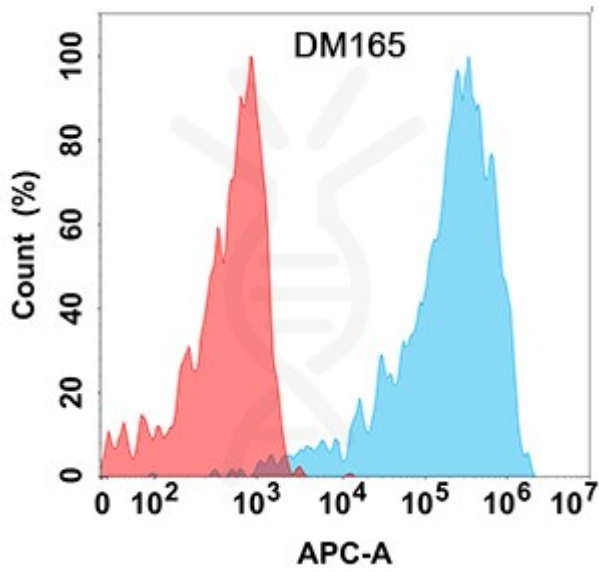


Figure 1. Flow cytometry analysis with Anti-CLEC12A (DM165) on HEK293 cells transfected with human CLEC12A (Blue histogram) or HEK293 transfected with irrelevant protein (Red histogram).

