

PRODUCT INFORMATION

Uniprot ID	P55285
Common Name	DS-6000A,DS6000A
Conjugate	Unconjugated
Synonyms	CADH6;K-cadherin
Applications	ELISA, Flow Cyt
Recommended Dilutions	ELISA 1:5000-10000, Flow Cyt 1:100
Formulation & Reconstitution	Lyophilized from sterile PBS, pH 7.4. Normally 5 % - 8% trehalose is added as protectants before lyophilization. Please see Certificate of Analysis for specific instructions of reconstitution.
Host Species	Humanized
IgG type	Human IgG1(K214R) - kappa
Reactivity	Human
Target	CDH6
Description	Anti-CDH6(raludotatug biosimilar) mAb
Delivery	In Stock
Storage & Shipping	Store at -20°C to -80°C for 12 months in lyophilized form. After reconstitution, if not intended for use within a month, aliquot and store at -80°C (Avoid repeated freezing and thawing). Lyophilized antibodies are shipped at ambient temperature.
Background	Research grade biosimilar. Not for use in therapeutic or diagnostic procedures for humans or animals.
Usage	Research use only



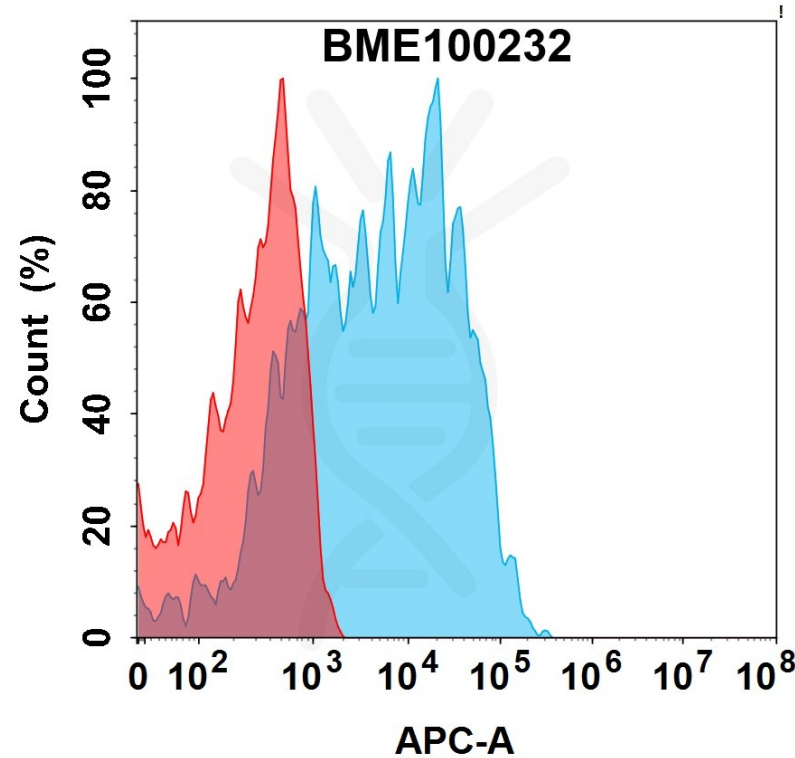


Figure 1. Flow cytometry analysis with 15µg/mL Anti-CDH6(raludotatug biosimilar) mAb (BME100232) on HEK293 cells transfected with Human CDH6 protein (Blue histogram) or HEK293 transfected with irrelevant protein (Red histogram).

Anti-CDH6(raludotatug biosimilar) mAb ELISA

0.2 µg of Human CDH6, His tagged protein per well

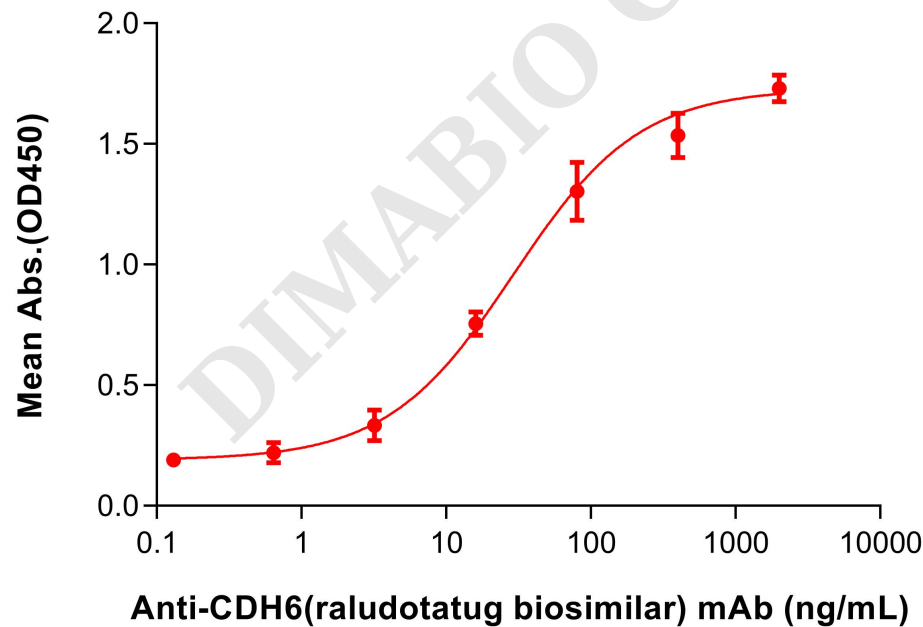


Figure 2. ELISA plate pre-coated by 2 µg/mL (100 µL/well) Human CDH6 Protein, His Tag (PME101111) can bind Anti-CDH6(raludotatug biosimilar) mAb (BME100232) in a linear range of 3.2–400 ng/mL.

