

PRODUCT INFORMATION

Common Name	8G5G9.p1.z12
Conjugate	Unconjugated
Synonyms	CAD17
Applications	ELISA, Flow Cyt
Recommended Dilutions	ELISA 1:5000-10000, Flow Cyt 1:100
Formulation & Reconstitution	Lyophilized from sterile PBS, pH 7.4. Normally 5 % - 8% trehalose is added as protectants before lyophilization. Please see Certificate of Analysis for specific instructions of reconstitution.
Host Species	Humanized
IgG type	Human IgG1(E356D,M358L) - kappa
Reactivity	Human
Target	CDH17
Description	Anti-CDH17(LM-350 biosimilar) mAb
Delivery	In Stock
Storage&Shipping	Store at -20°C to -80°C for 12 months in lyophilized form. After reconstitution, if not intended for use within a month, aliquot and store at -80°C (Avoid repeated freezing and thawing). Lyophilized antibodies are shipped at ambient temperature.
Background	Research grade biosimilar. Not for use in therapeutic or diagnostic procedures for humans or animals.
Usage	Research use only



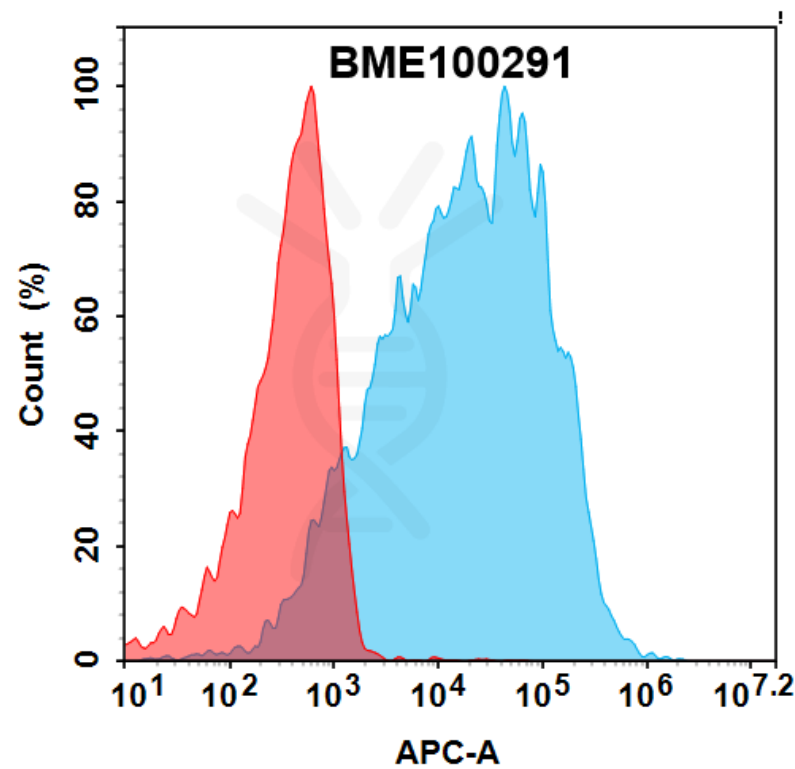


Figure 1. Flow cytometry analysis with 0.5 μ g/ml Anti-CDH17(LM-350 biosimilar) mAb (BME100291) on HEK293 cells transfected with Human CDH17 protein (Blue histogram) or HEK293 transfected with irrelevant protein (Red histogram).

Anti-CDH17(LM-350 biosimilar) mAb ELISA

0.2 μ g of Human CDH17, His tagged protein per well

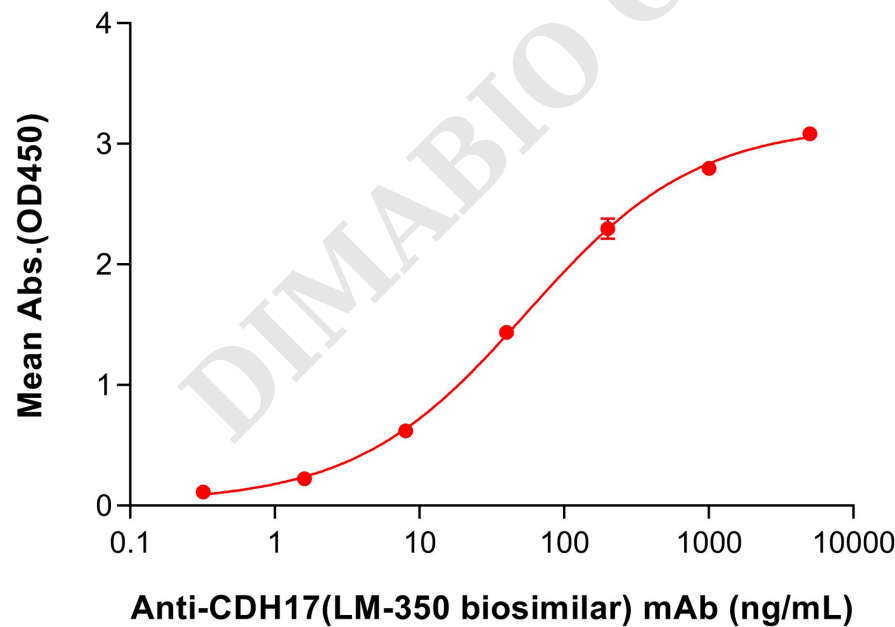


Figure 2. ELISA plate pre-coated by 2 μ g/mL (100 μ L/well) Human CDH17 Protein, His Tag (PME100801) can bind Anti-CDH17(LM-350 biosimilar) mAb (BME100291) in a linear range of 8-200 ng/mL.

