

PRODUCT INFORMATION

Clone ID	5F5
Target	CDH17
Synonyms	CDH16;HPT-1;HPT1
Host Species	Rabbit
Description	Anti-CDH17 antibody(5F5), IgG1 Chimeric mAb
Delivery	In Stock
Uniprot ID	Q12864
IgG type	Rabbit/Human Fc chimeric IgG1
Clonality	Monoclonal
Reactivity	Human
Applications	WB; Flow Cyt
Recommended Dilutions	WB 1:1000; Flow Cyt 1:100
Purification	Purified from cell culture supernatant by affinity chromatography
Endotoxin	Less than 1.0 EU/μg by the LAL method. For <1 EU/mg requirements, please contact us for customization.
Formulation & Reconstitution	Lyophilized from sterile PBS, pH 7.4. Normally 5 % - 8% trehalose is added as protectants before lyophilization. Please see Certificate of Analysis for specific instructions of reconstitution.
Storage&Shipping	Store at -20°C to -80°C for 12 months in lyophilized form. After reconstitution, if not intended for use within a month, aliquot and store at -80°C (Avoid repeated freezing and thawing). Lyophilized proteins are shipped at ambient temperature.
Background	This gene is a member of the cadherin superfamily, genes encoding calcium-dependent, membrane-associated glycoproteins. The encoded protein is cadherin-like, consisting of an extracellular region, containing 7 cadherin domains, and a transmembrane region but lacking the conserved cytoplasmic domain. The protein is a component of the gastrointestinal tract and pancreatic ducts, acting as an intestinal proton-dependent peptide transporter in the first step in oral absorption of many medically important peptide-based drugs. The protein may also play a role in the morphological organization of liver and intestine. Alternative splicing results in multiple transcript variants. [provided by RefSeq, Jan 2009]
Usage	Research use only
Conjugate	Unconjugated
DIMA Disclaimer	All DIMA recombinant antibodies are genuinely generated by DIMA Biotech. They are all under patent application. Any protein sequencing or reverse engineering attempt is prohibited. We are actively scr



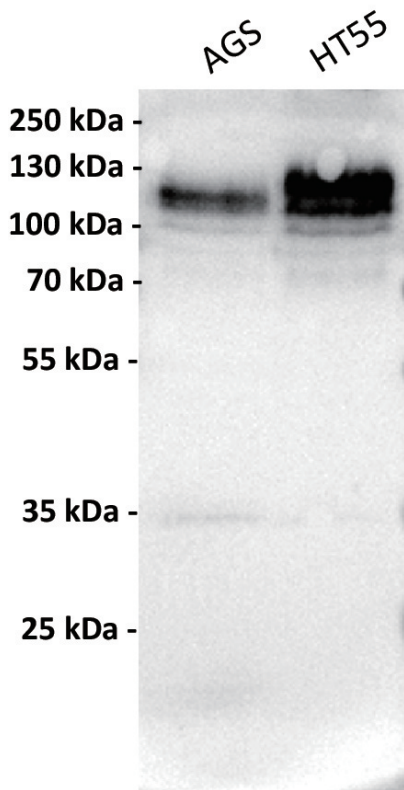


Figure 1. Anti-CDH17 antibody (SKU# DMC100637) at 1/1000 dilution

Lane 1: AGS, whole cell lysate
Lane 2: HT55, whole cell lysate

Secondary : Goat Anti-Rabbit IgG H&L (HRP) at 1/5000 dilution

Predicted band size: 92 kDa
Observed band size: 120 kDa

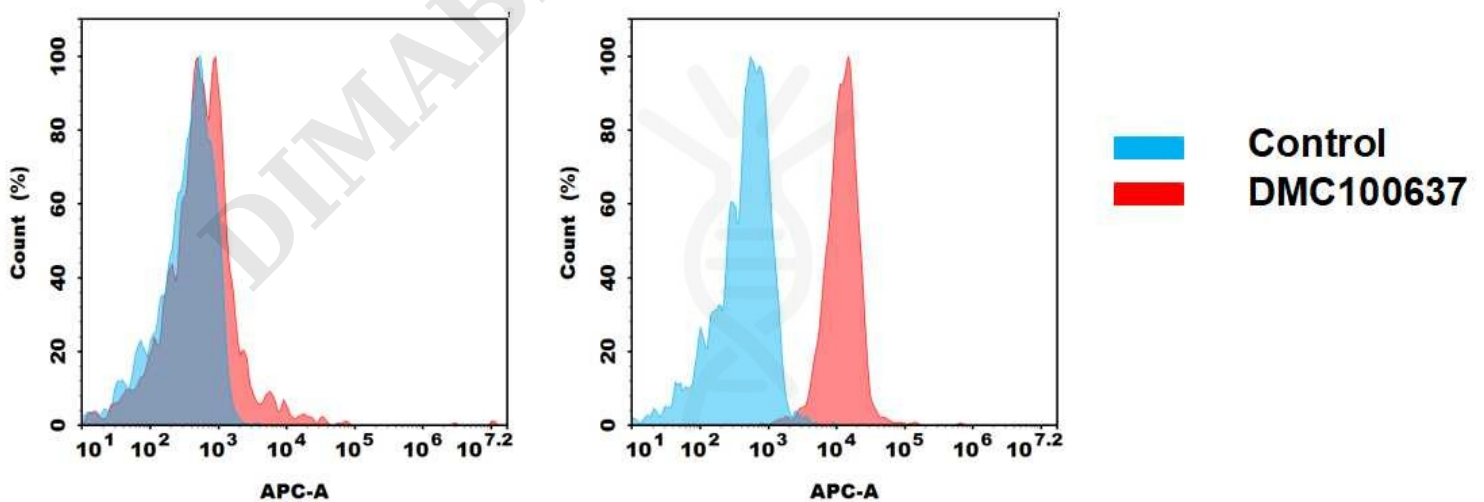


Figure 2. Flow cytometry analysis of antigen binding of anti-human CDH17 mAb(DMC100637).

(A) DMC100637 does not bind to 293T cells that do not express CDH17

(B) A clear peak shift of DMC100637 was seen compared to the control when incubated with CDH17 -expressing HT55 cells, indicating strong binding of DMC100637 to CDH17.

Antibodies were incubated at 2ug/mL.

