

PRODUCT INFORMATION

Clone ID	2E7
Target	CD8A
Synonyms	CD8; p32; Leu2; IMD116; CD8alpha
Host Species	Rabbit
Description	Anti-CD8A antibody(2E7), IgG1 Chimeric mAb
Delivery	In Stock
Uniprot ID	P01732
IgG type	Rabbit/Human Fc chimeric IgG1
Clonality	Monoclonal
Reactivity	Human
Applications	ELISA, Flow Cyt
Recommended Dilutions	ELISA 1/5000-10000;Flow Cyt 1/100
Purification	Purified from cell culture supernatant by affinity chromatography
Formulation & Reconstitution	Powder
Storage&Shipping	Store at -20°C to -80°C for 12 months in lyophilized form. After reconstitution, if not intended for use within a month, aliquot and store at -80°C (Avoid repeated freezing and thawing). The CD8 antigen is a cell surface glycoprotein found on most cytotoxic T lymphocytes that mediates efficient cell-cell interactions within the immune system. The CD8 antigen acts as a coreceptor with the T-cell receptor on the T lymphocyte to recognize antigens displayed by an antigen presenting cell in the context of class I MHC molecules. The coreceptor functions as either a homodimer composed of two alpha chains or as a heterodimer composed of one alpha and one beta chain. Both alpha and beta chains share significant homology to immunoglobulin variable light chains. This gene encodes the CD8 alpha chain. Multiple transcript variants encoding different isoforms have been found for this gene. The major protein isoforms of this gene differ by the presence or absence of a transmembrane domain and thus differ in being a membrane-anchored or secreted protein. [provided by RefSeq, May 2020]
Background	
Usage	Research use only
Conjugate	Unconjugated



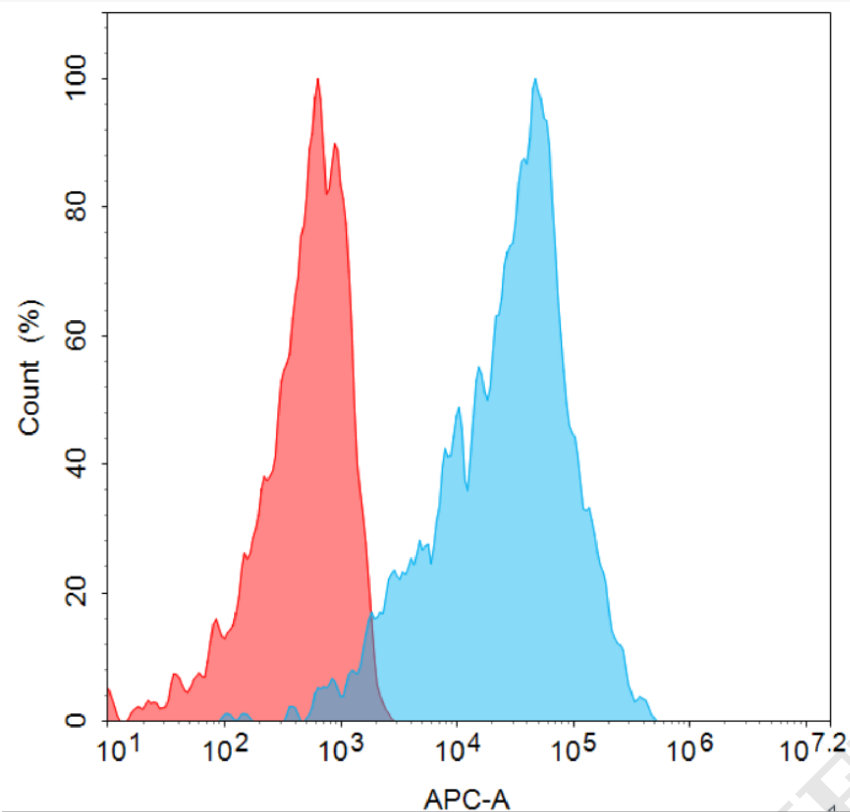


Figure 1. Flow cytometry analysis with 1µg/mL Anti-CD8A antibody(2E7) mAb on HEK293 cells transfected with human CD8A (Blue histogram) or HEK293 transfected with irrelevant protein (Red histogram).

Anti-CD8A antibody(2E7), IgG1 Chimeric mAb ELISA
0.1µg of Human CD8A, His tagged protein per well

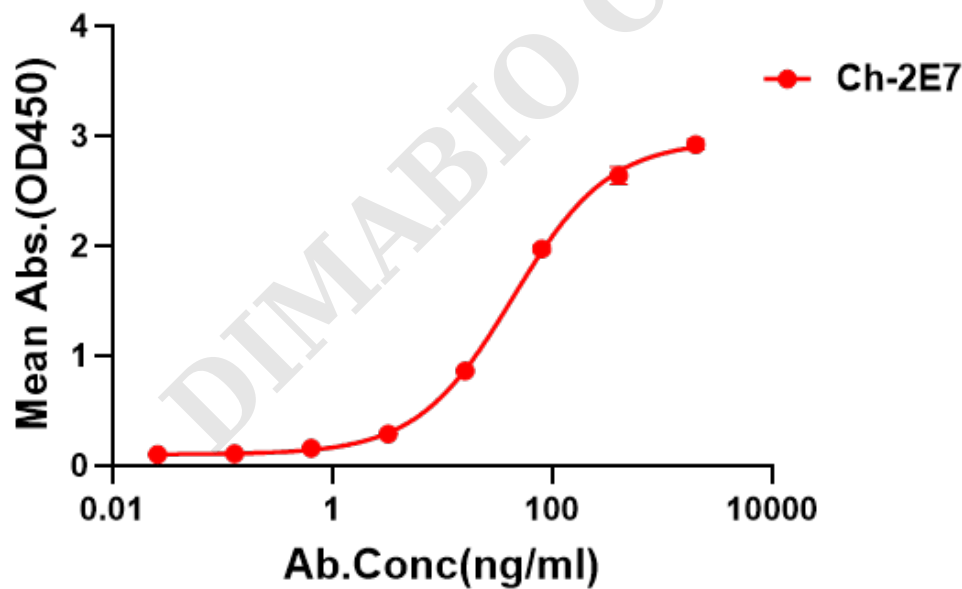


Figure 2. ELISA plate pre-coated by 1 µg/ml (100 µl/well) Human CD8A Protein, His Tag can bind IgG1 Chimeric anti-CD8A monoclonal antibody(clone: 2F7) in a linear range of 16-400 ng/ml.

