

## PRODUCT INFORMATION

<b>Uniprot ID</b>	P40259
<b>Common Name</b>	RO5541077-IG-7596
<b>Conjugate</b>	Unconjugated
<b>Synonyms</b>	AGM6;B29;IGB
<b>Applications</b>	ELISA, Flow Cyt
<b>Recommended Dilutions</b>	ELISA 1:5000-10000, Flow Cyt 1:100
<b>Formulation &amp; Reconstitution</b>	Lyophilized from sterile PBS, pH 7.4. Normally 5% - 8% trehalose is added as protectants before lyophilization. Please see Certificate of Analysis for specific instructions of reconstitution.
<b>Host Species</b>	Chimeric Rabbit
<b>IgG type</b>	Rabbit IgG
<b>Reactivity</b>	Human
<b>Target</b>	CD79B
<b>Description</b>	Anti-CD79B (polatuzumab biosimilar) antibody, Rabbit IgG Chimeric mAb
<b>Delivery</b>	In Stock
<b>Storage &amp; Shipping</b>	Store at -20°C to -80°C for 12 months in lyophilized form. After reconstitution, if not intended for use within a month, aliquot and store at -80°C (Avoid repeated freezing and thawing). Lyophilized antibodies are shipped at ambient temperature.
<b>Background</b>	Research grade biosimilar. Not for use in therapeutic or diagnostic procedures for humans or animals.
<b>Usage</b>	Research use only
<b>DIMA Disclaimer</b>	All DIMA recombinant antibodies are genuinely generated by DIMA Biotech. They are all under patent application. Any protein sequencing or reverse engineering attempt is prohibited. We are actively scrutinizing all patent application to ensure no IP infringement.



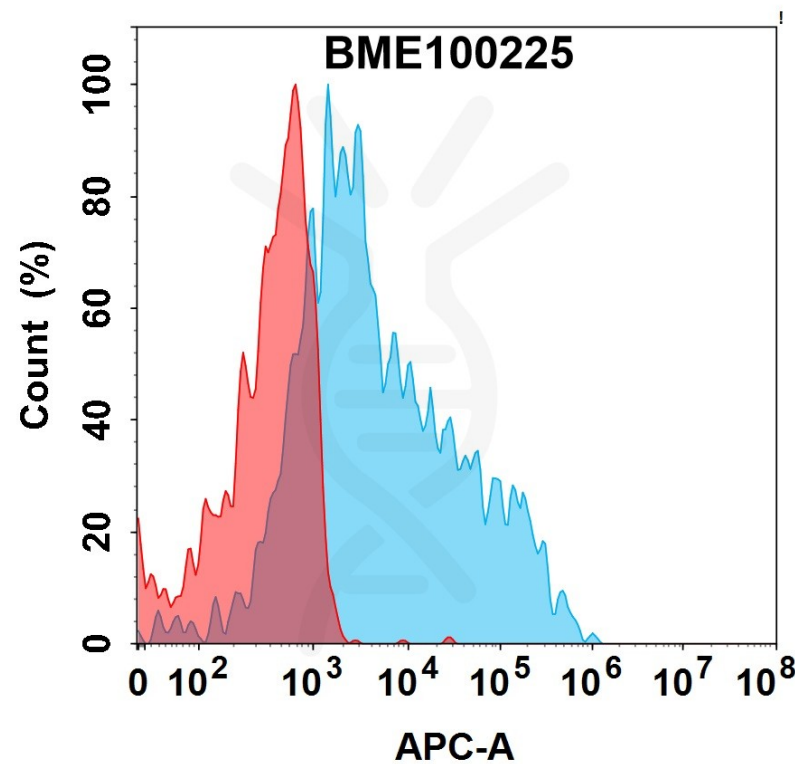


Figure 1. Flow cytometry analysis with 15µg/mL Anti-CD79B (polatuzumab biosimilar) antibody, Rabbit IgG Chimeric mAb (BME100225) on Expi293 cells transfected with Human CD79B protein (Blue histogram) or Expi293 transfected with irrelevant protein (Red histogram).

**Anti-CD79B (polatuzumab biosimilar) antibody, Rabbit IgG Chimeric mAb ELISA**  
0.2 µg of Human CD79B, hFc tagged protein per well

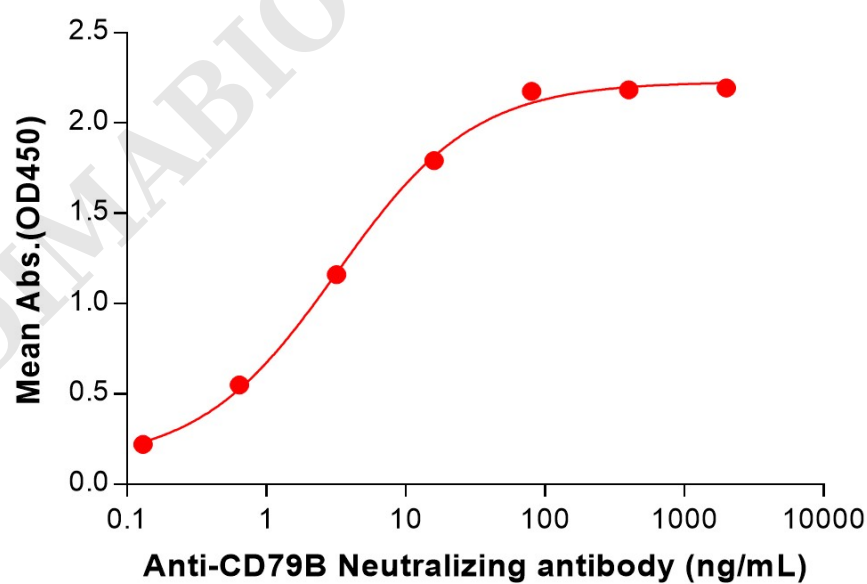


Figure 2. ELISA plate pre-coated by 2 µg/mL (100 µL/well) Human CD79B Protein, hFc Tag (PME101089) can bind Anti-CD79B (polatuzumab biosimilar) antibody, Rabbit IgG Chimeric mAb (BME100225) in a linear range of 0.13-80 ng/mL.

