

PRODUCT INFORMATION

Common Name	BG-9588, hu5c8
Conjugate	Unconjugated
Synonyms	CD40LG;CD154;CD40L;HIGM1;IGM;IMD3;T-BAM;TNFSF5;TRAP;gp39
Applications	ELISA; Flow Cyt
Recommended Dilutions	ELISA 1:5000-10000; Flow Cyt 1:100
Formulation & Reconstitution	Lyophilized from sterile PBS, pH 7.4. Normally 5 % - 8% trehalose is added as protectants before lyophilization. Please see Certificate of Analysis for specific instructions of reconstitution.
Host Species	Humanized
IgG type	Human IgG1 - kappa
Reactivity	Human
Target	CD40 Ligand
Uniprot ID	P29965
Description	Anti-CD40L (ruplizumab biosimilar) mAb
Delivery	In Stock
Storage & Shipping	Store at -20°C to -80°C for 12 months in lyophilized form. After reconstitution, if not intended for use within a month, aliquot and store at -80°C (Avoid repeated freezing and thawing). Lyophilized proteins are shipped at ambient temperature.
Background	Research grade biosimilar. Not for use in therapeutic or diagnostic procedures for humans or animals.
Usage	Research use only
DIMA Disclaimer	All DIMA recombinant antibodies are genuinely generated by DIMA Biotech. They are all under patent application. Any protein sequencing or reverse engineering attempt is prohibited. We are actively scrutinizing all patent application to ensure no IP infringement.

Anti-CD40 Ligand (ruplizumab biosimilar) mAb ELISA

0.2 µg of Human CD40 Ligand, hFc Tagged protein per well

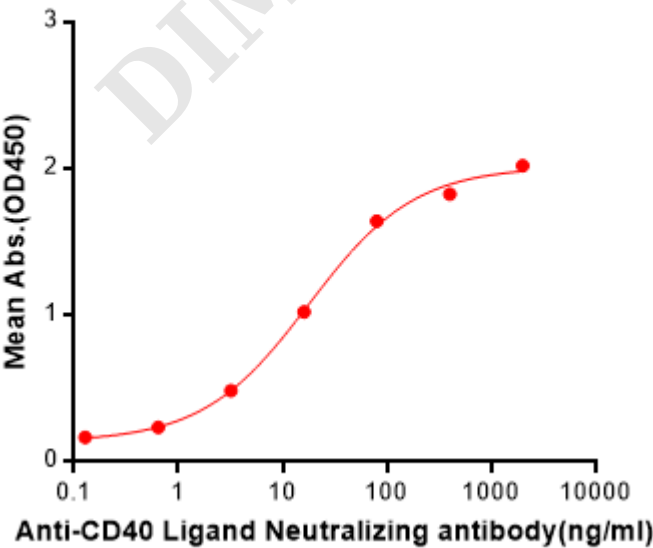


Figure 1. ELISA plate pre-coated by 2 µg/ml (100 µL/well) Human CD40 Ligand Protein, hFc Tag (PME100192) can bind Anti-CD40 Ligand (ruplizumab biosimilar) mAb (BME100042) in a linear range of 0.64-400 ng/ml. In order to specifically detect BME100042, mouse anti-human Fab-specific antibody was used as detection antibody.

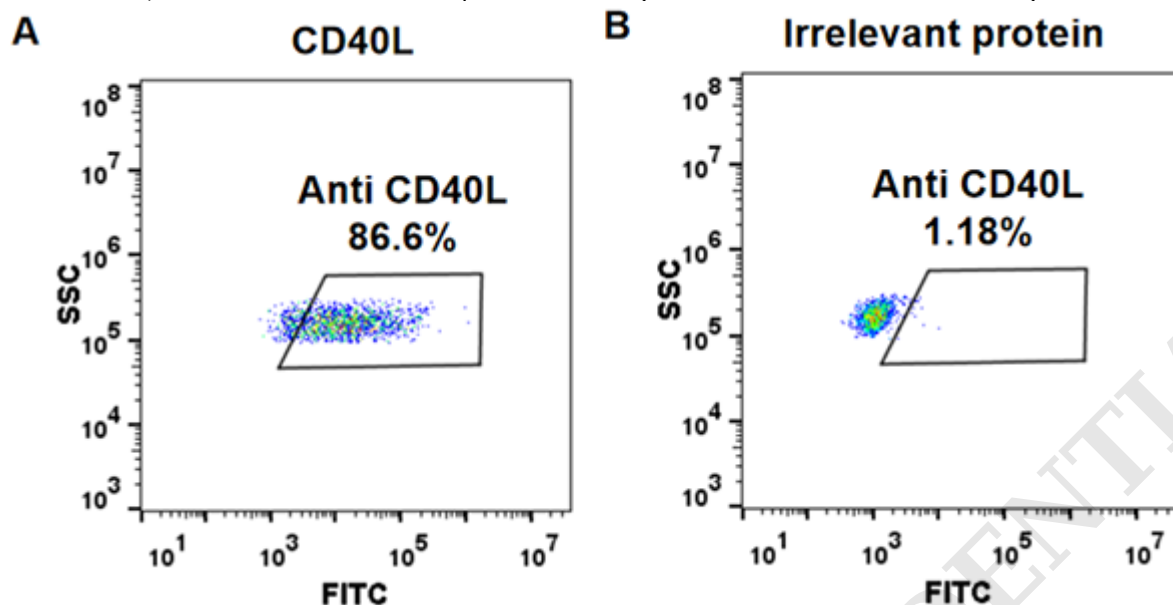


Figure 2. HEK293 cell line transfected with irrelevant protein (B) and human CD40L (A) were surface stained with Anti-CD40L mAb 1 µg/ml (ruplizumab) followed by Alexa 488-conjugated anti-human IgG secondary antibody.

