

PRODUCT INFORMATION

Clone ID	DM101
Target	CD40
Synonyms	CD40; Bp50; CDW40; MGC9013; TNFRSF5; p50
Host Species	Rabbit
Description	Anti-CD40 antibody(DM101); Rabbit mAb
Delivery	In Stock
Uniprot ID	P25942
IgG type	Rabbit IgG
Clonality	Monoclonal
Reactivity	Human
Applications	ELISA; Flow Cyt
Recommended Dilutions	ELISA 1:5000-10000; Flow Cyt 1:100
Purification	Purified from cell culture supernatant by affinity chromatography
Formulation & Reconstitution	Lyophilized from sterile PBS, pH 7.4. Normally 5 % - 8% trehalose is added as protectants before lyophilization. Please see Certificate of Analysis for specific instructions of reconstitution.
Storage & Shipping	Store at -20°C to -80°C for 12 months in lyophilized form. After reconstitution, if not intended for use within a month, aliquot and store at -80°C (Avoid repeated freezing and thawing). Lyophilized proteins are shipped at ambient temperature.
Background	This gene is a member of the TNF-receptor superfamily. The encoded protein is a receptor on antigen-presenting cells of the immune system and is essential for mediating a broad variety of immune and inflammatory responses including T cell-dependent immunoglobulin class switching; memory B cell development; and germinal center formation. AT-hook transcription factor AKNA is reported to coordinately regulate the expression of this receptor and its ligand; which may be important for homotypic cell interactions. Adaptor protein TNFR2 interacts with this receptor and serves as a mediator of the signal transduction. The interaction of this receptor and its ligand is found to be necessary for amyloid-beta-induced microglial activation; and thus is thought to be an early event in Alzheimer disease pathogenesis. Mutations affecting this gene are the cause of autosomal recessive hyper-IgM immunodeficiency type 3 (HIGM3). Multiple alternatively spliced transcript variants of this gene encoding distinct isoforms have been reported.
Usage	Research use only



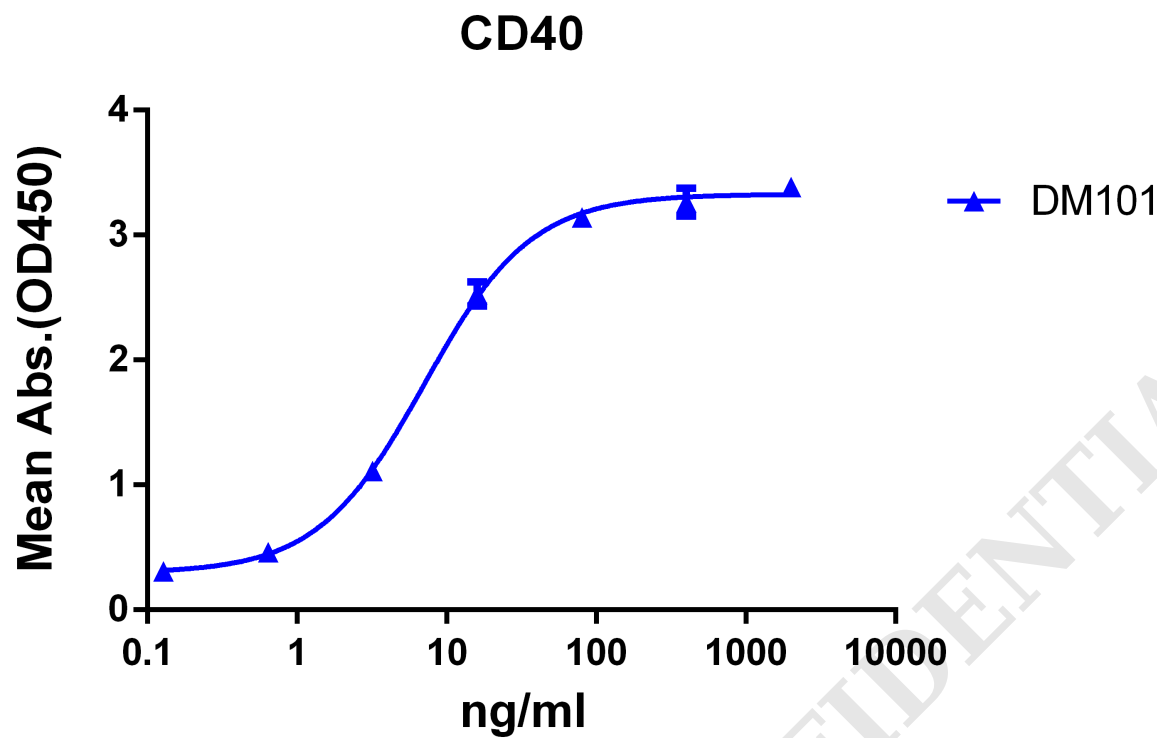


Figure 1. ELISA plate pre-coated by 2 µg/ml (100 µl/well) Human CD40 protein, mFc-His tagged protein PME100015 can bind Rabbit anti-CD40 monoclonal antibody (clone: DM101) in a linear range of 0.64-80 ng/ml.

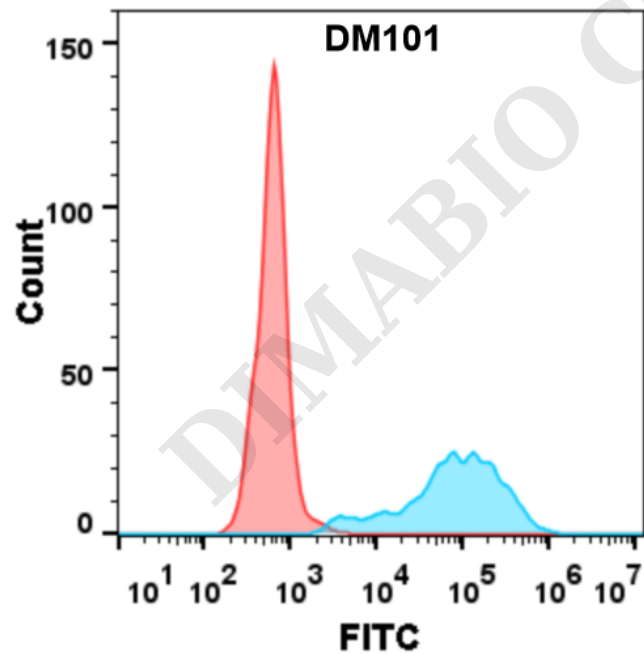


Figure 2. A. Flow cytometry analysis with Anti-CD40 (DM101) on Expi293 cells transfected with human CD40 (Blue histogram) or Expi293 transfected with irrelevant protein (Red histogram).



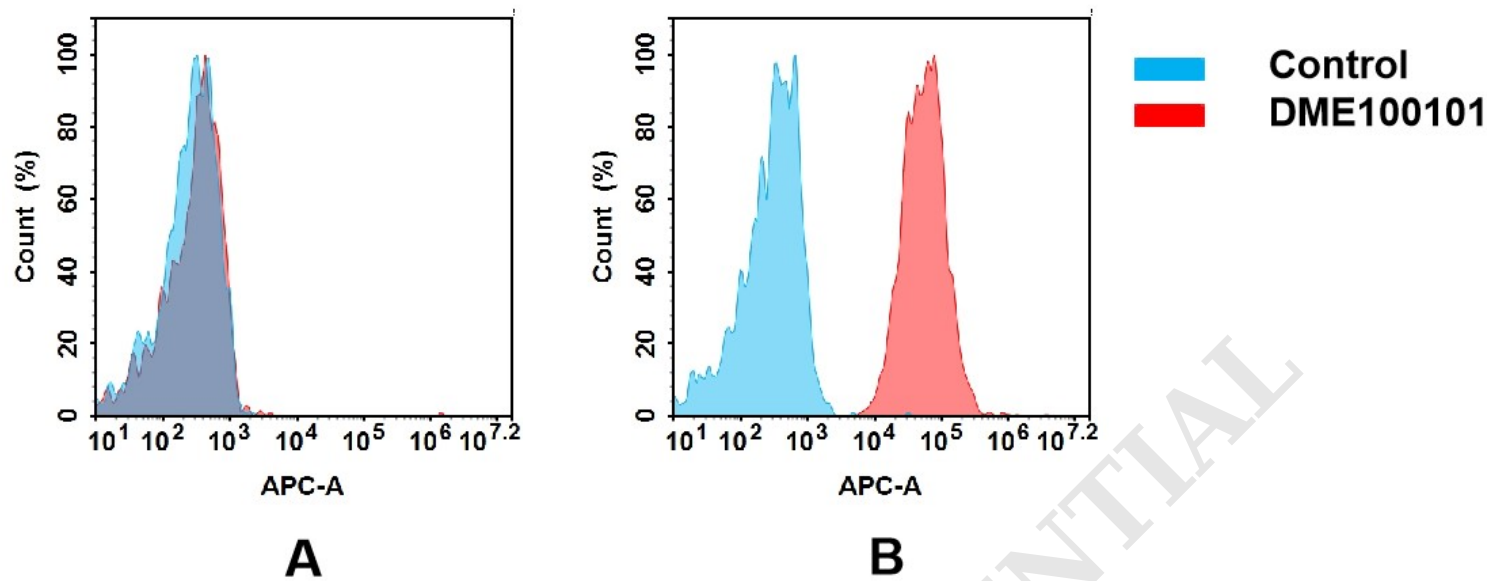


Figure 3. Flow cytometry analysis of antigen binding of rabbit anti-human CD40 mAb(DME100101).

(A) DME100101 does not bind to Jurkat cells that do not express CD40.
(B) A clear peak shift of DME100101 was seen compared to the control when incubated with CD40-expressing Raji cells, indicating strong binding of DME100101 to CD40. Antibodies were incubated at 2 µg/mL.

