

PRODUCT INFORMATION

Clone ID	1G2
Target	CD3E
Synonyms	CD3e;T3E
Host Species	Rabbit
Description	Anti-CD3E antibody(1G2), IgG1 Chimeric mAb
Delivery	In Stock
Uniprot ID	P07766
IgG type	Rabbit/Human Fc chimeric IgG1
Clonality	Monoclonal
Reactivity	Human
Applications	Flow Cyt
Recommended Dilutions	Flow Cyt 1/100
Purification	Purified from cell culture supernatant by affinity chromatography
Formulation & Reconstitution	Lyophilized from sterile PBS, pH 7.4. Normally 5 % - 8% trehalose is added as protectants before lyophilization. Please see Certificate of Analysis for specific instructions of reconstitution.
Storage&Shipping	Store at -20°C to -80°C for 12 months in lyophilized form. After reconstitution, if not intended for use within a month, aliquot and store at -80°C (Avoid repeated freezing and thawing). Lyophilized proteins are shipped at ambient temperature.
Background	The protein encoded by this gene is the CD3-epsilon polypeptide, which together with CD3-gamma, -delta and -zeta, and the T-cell receptor alpha/beta and gamma/delta heterodimers, forms the T-cell receptor-CD3 complex. This complex plays an important role in coupling antigen recognition to several intracellular signal-transduction pathways. The genes encoding the epsilon, gamma and delta polypeptides are located in the same cluster on chromosome 11. The epsilon polypeptide plays an essential role in T-cell development. Defects in this gene cause immunodeficiency. This gene has also been linked to a susceptibility to type I diabetes in women. [provided by RefSeq, Jul 2008]
Usage	Research use only
Conjugate	Unconjugated
DIMA Disclaimer	All DIMA recombinant antibodies are genuinely generated by DIMA Biotech. They are all under patent application. Any protein sequencing or reverse engineering attempt is prohibited. We are actively scr



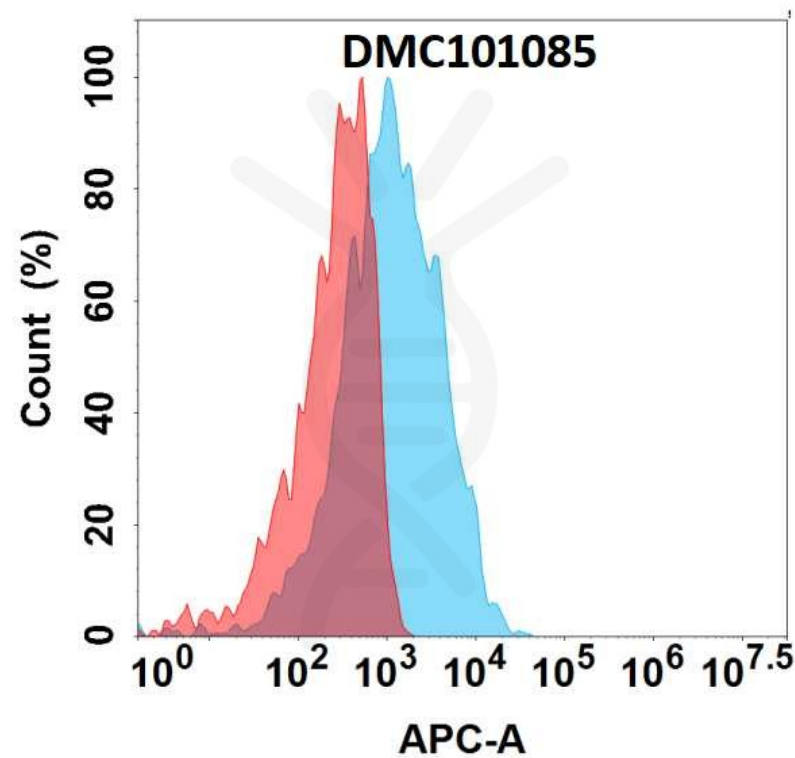


Figure 1. Flow cytometry analysis with 1µg/mL Anti-CD3E (1G2) mAb on Jurkat cells.

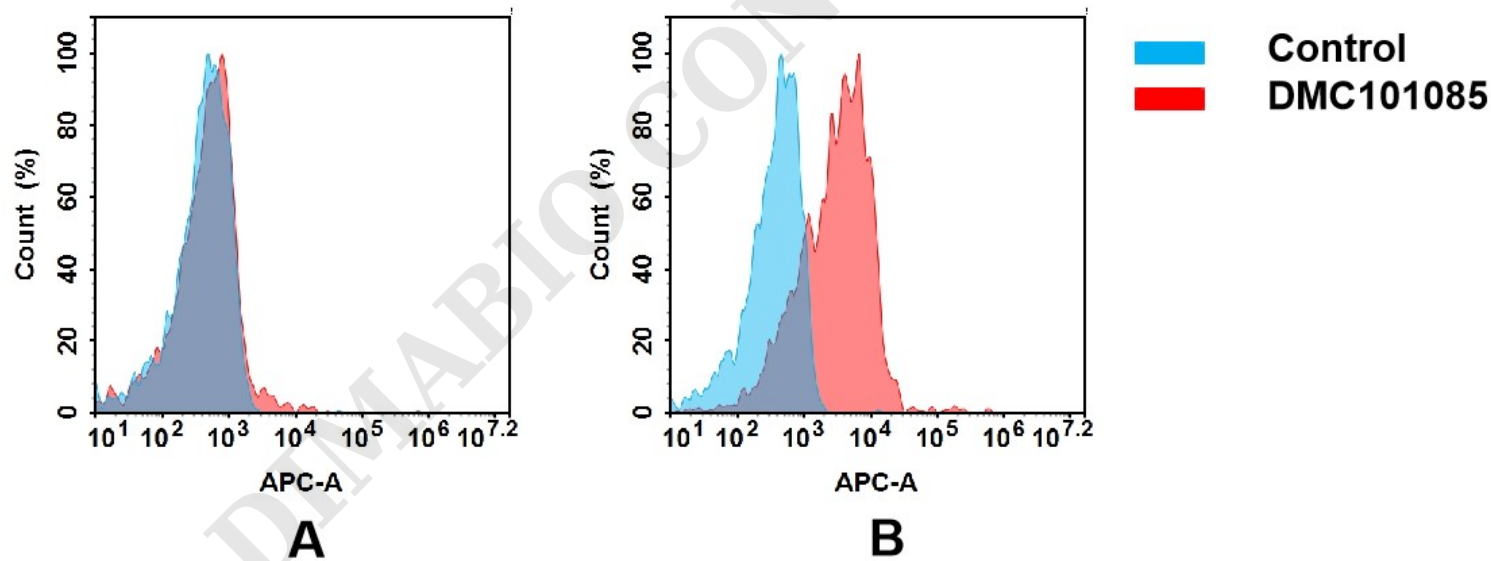


Figure 2. Flow cytometry analysis of antigen binding of anti-human CD3E mAb(DMC101085).
(A) DMC101085 does not bind to 293T cells that do not express CD3E.
(B) A clear peak shift of DMC101085 was seen compared to the control when incubated with CD3E-expressing Jurkat cells, indicating strong binding of DMC101085 to CD3E. Antibodies were incubated at 5 µg/mL.

