

PRODUCT INFORMATION

Clone ID	DM134
Target	CD34
Synonyms	CD34
Host Species	Rabbit
Description	Anti-CD34 antibody(DM134); Rabbit mAb
Delivery	In Stock
Uniprot ID	P28906
IgG type	Rabbit IgG
Clonality	Monoclonal
Reactivity	Human
Applications	ELISA; Flow Cyt
Recommended Dilutions	ELISA 1:5000-10000; Flow Cyt 1:100
Purification	Purified from cell culture supernatant by affinity chromatography
Endotoxin	Less than 1.0 EU/μg by the LAL method. For <1 EU/mg requirements, please contact us for customization.
Formulation & Reconstitution	Lyophilized from sterile PBS, pH 7.4. Normally 5 % - 8% trehalose is added as protectants before lyophilization. Please see Certificate of Analysis for specific instructions of reconstitution.
Storage&Shipping	Store at -20°C to -80°C for 12 months in lyophilized form. After reconstitution, if not intended for use within a month, aliquot and store at -80°C (Avoid repeated freezing and thawing). Lyophilized proteins are shipped at ambient temperature.
Background	The protein encoded by this gene may play a role in the attachment of stem cells to the bone marrow extracellular matrix or to stromal cells. This single-pass membrane protein is highly glycosylated and phosphorylated by protein kinase C. Two transcript variants encoding different isoforms have been found for this gene.
Usage	Research use only
Conjugate	Unconjugated
DIMA Disclaimer	All DIMA recombinant antibodies are genuinely generated by DIMA Biotech. They are all under patent application. Any protein sequencing or reverse engineering attempt is prohibited. We are actively scr



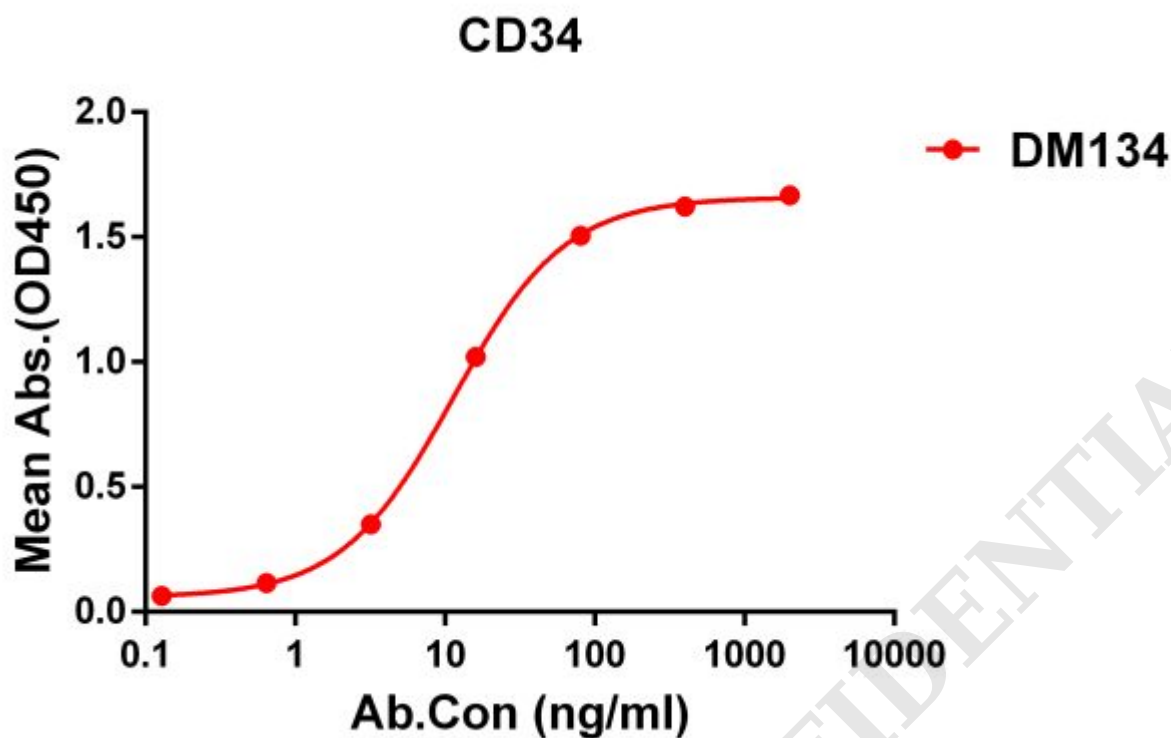


Figure 1. ELISA plate pre-coated by 1 $\mu\text{g/ml}$ (100 $\mu\text{l/well}$) Human CD34 protein, His tagged protein ([getskuurl sku="PME100469"]) can bind Rabbit anti-CD34 monoclonal antibody(clone: **DM134**) in a linear range of 0.2-12 ng/ml.

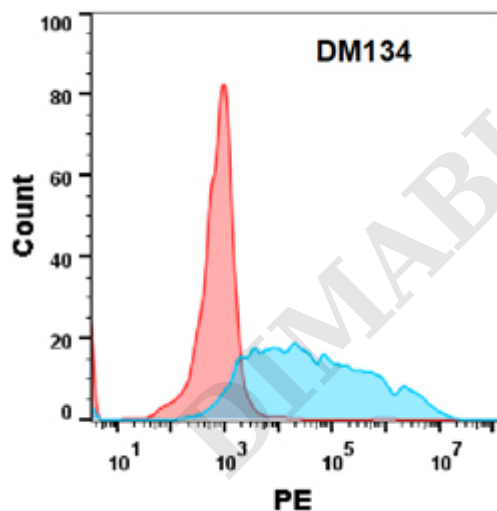


Figure 2. Flow cytometry analysis with Anti-CD34 (**DM134**) on HEK293 cells transfected with human CD34 (Blue histogram) or HEK293 transfected with irrelevant protein (Red histogram).

