

PRODUCT INFORMATION

| | |
|------------------------------|--|
| Clone ID | DM103 |
| Target | CD30 |
| Synonyms | TNFRSF8;CD30;D1S166E;Ki-1 |
| Host Species | Rabbit |
| Description | Anti-CD30 antibody(DM103); Rabbit mAb |
| Delivery | In Stock |
| Uniprot ID | P28908 |
| IgG type | Rabbit IgG |
| Clonality | Monoclonal |
| Reactivity | Human |
| Applications | ELISA; Flow Cyt |
| Recommended Dilutions | ELISA 1:5000-10000; Flow Cyt 1:100 |
| Purification | Purified from cell culture supernatant by affinity chromatography |
| Formulation & Reconstitution | Lyophilized from sterile PBS, pH 7.4. Normally 5 % - 8% trehalose is added as protectants before lyophilization. Please see Certificate of Analysis for specific instructions of reconstitution. |
| Storage&Shipping | Store at -20°C to -80°C for 12 months in lyophilized form. After reconstitution, if not intended for use within a month, aliquot and store at -80°C (Avoid repeated freezing and thawing). Lyophilized proteins are shipped at ambient temperature. |
| Background | The protein encoded by this gene is a member of the TNF-receptor superfamily. This receptor is expressed by activated; but not by resting; T and B cells. TRAF2 and TRAF5 can interact with this receptor; and mediate the signal transduction that leads to the activation of NF-kappaB. This receptor is a positive regulator of apoptosis; and also has been shown to limit the proliferative potential of autoreactive CD8 effector T cells and protect the body against autoimmunity. Two alternatively spliced transcript variants of this gene encoding distinct isoforms have been reported. |
| Usage | Research use only |
| Conjugate | Unconjugated |
| DIMA Disclaimer | All DIMA recombinant antibodies are genuinely generated by DIMA Biotech. They are all under patent application. Any protein sequencing or reverse engineering attempt is prohibited. We are actively scr |



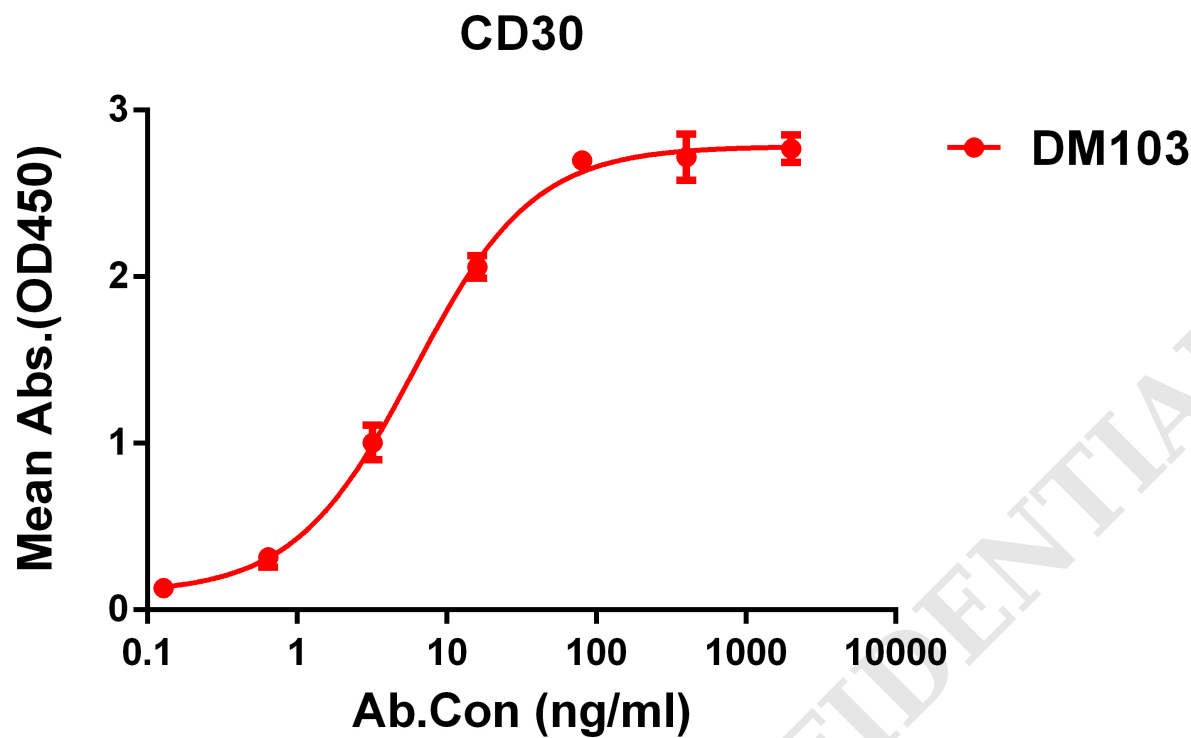


Figure 1. ELISA plate pre-coated by 2 μ g/ml (100 μ l/well) Human CD30 protein, His tagged protein PME100481 can bind Rabbit anti-CD30 monoclonal antibody (clone: DM103) in a linear range of 0.12-60 ng/ml.

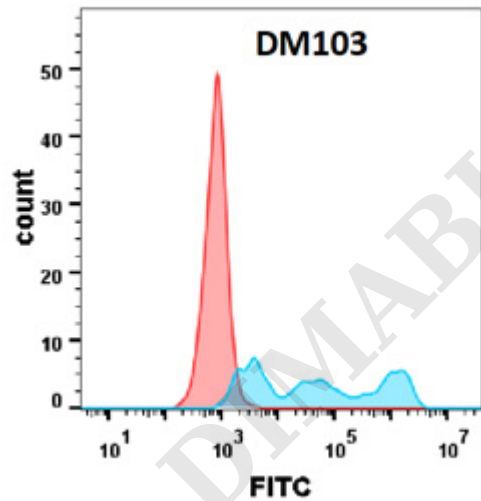


Figure 2. Flow cytometry analysis with Anti-CD30 (DM103) on HEK293 cells transfected with human CD30(Blue histogram) or HEK293 transfected with irrelevant protein (Red histogram).



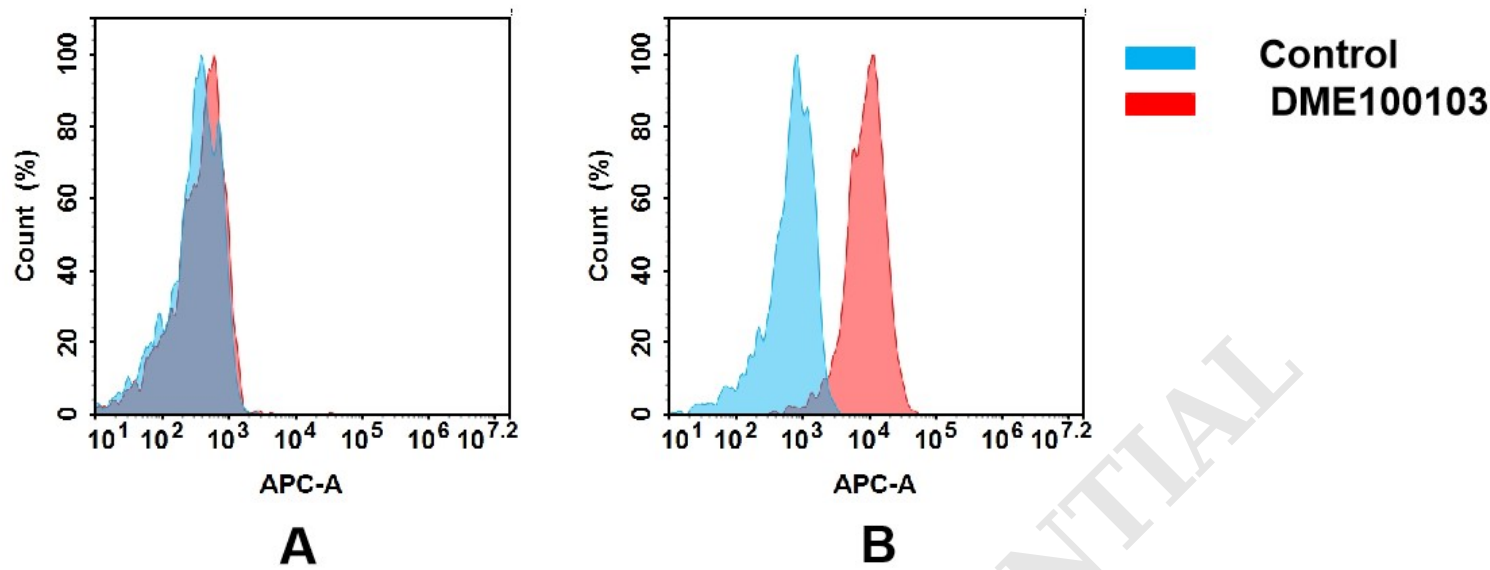


Figure 3. Flow cytometry analysis of antigen binding of rabbit anti-human CD30 mAb(DME100103).

(A) DME100103 does not bind to 293T cells that do not express CD30.
(B) A clear peak shift of DME100103 was seen compared to the control when incubated with CD30-expressing 8226 cells, indicating strong binding of DME100103 to CD30. Antibodies were incubated at 10 µg/mL.

