

PRODUCT INFORMATION

| | |
|------------------------------|---|
| Uniprot ID | P26842 |
| Common Name | MK-5890, MK5890 |
| Conjugate | Unconjugated |
| Synonyms | CD27, TNFRSF7, S152, T14, Tp55 |
| Applications | ELISA, Flow Cyt |
| Recommended Dilutions | ELISA 1:5000-10000, Flow Cyt 1:100 |
| Formulation & Reconstitution | Lyophilized from sterile PBS, pH 7.4. Normally 5 % - 8% trehalose is added as protectants before lyophilization. Please see Certificate of Analysis for specific instructions of reconstitution. |
| Host Species | Chimeric Humanized |
| IgG type | Human IgG1(E356D,M358L) - kappa |
| Reactivity | Human |
| Target | CD27 |
| Description | Anti-CD27(boserolimab biosimilar) mAb |
| Delivery | In Stock |
| Storage&Shipping | Store at -20°C to -80°C for 12 months in lyophilized form. After reconstitution, if not intended for use within a month, aliquot and store at -80°C (Avoid repeated freezing and thawing). Lyophilized antibodies are shipped at ambient temperature. |
| Background | Research grade biosimilar. Not for use in therapeutic or diagnostic procedures for humans or animals. |
| Usage | Research use only |



Anti-CD27(boserolimab biosimilar) mAb ELISA

0.2 µg of Human CD27, mFc-His tagged protein per well

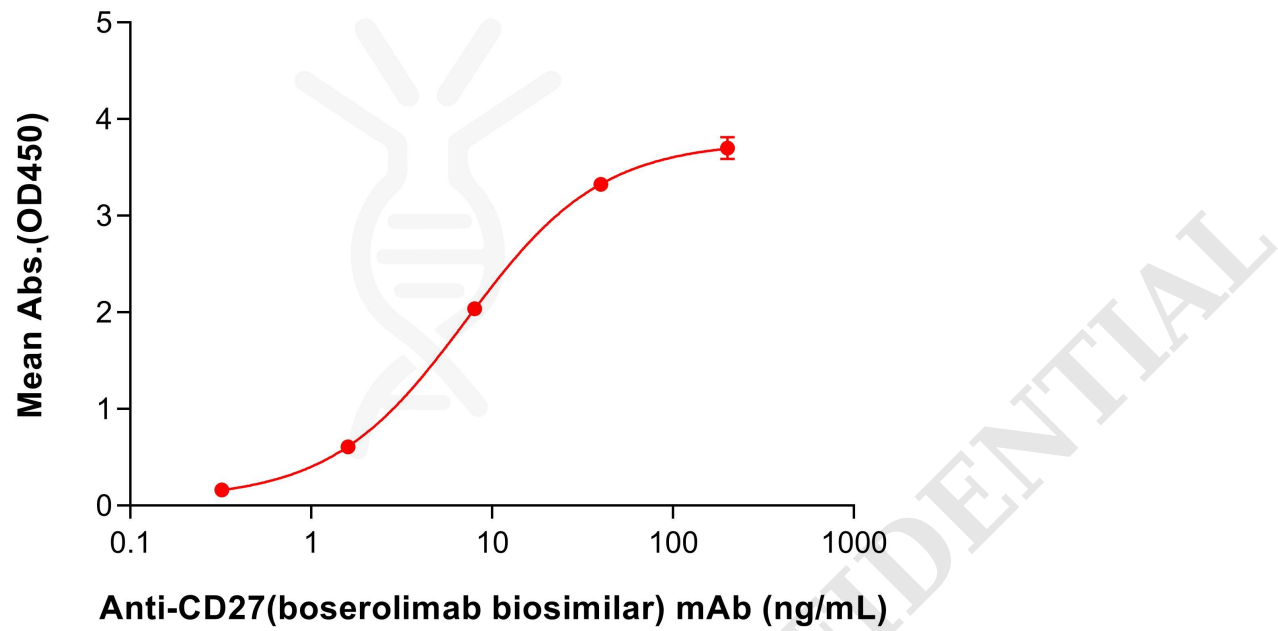


Figure 1. ELISA plate pre-coated by 2 µg/mL (100 µL/well) Human CD27 Protein, mFc-His Tag (PME100013) can bind Anti-CD27(boserolimab biosimilar) mAb (BME100439) in a linear range of 1.6-8 ng/mL.

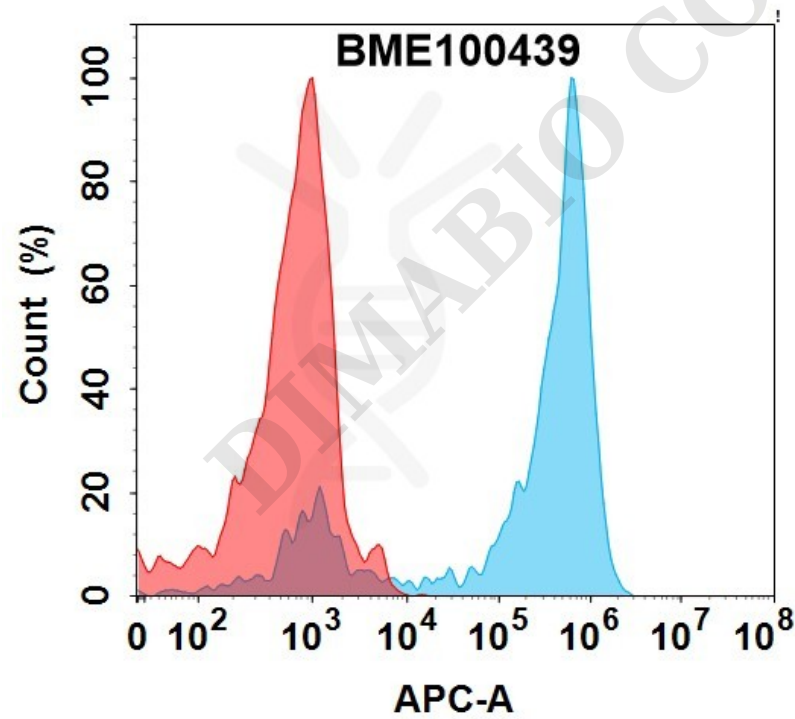


Figure 2. Flow cytometry analysis with 1 µg/mL Anti-CD27(boserolimab biosimilar) mAb (BME100439) on HEK293 cells transfected with Human CD27 protein (Blue histogram) or HEK293 transfected with irrelevant protein (Red histogram).

