

PRODUCT INFORMATION

Clone ID	DMC280
Target	CD21
Synonyms	C3DR; CD21; CR; CVID7; SLEB9
Host Species	Rabbit
Description	Anti-CD21 antibody(DMC280); IgG1 Chimeric mAb
Delivery	In Stock
Uniprot ID	P20023
IgG type	Rabbit/Human Fc chimeric IgG1
Clonality	Monoclonal
Reactivity	Human
Applications	Flow Cyt; WB
Recommended Dilutions	Flow Cyt 1:100; WB 1:1000
Purification	Purified from cell culture supernatant by affinity chromatography
Formulation & Reconstitution	Lyophilized from sterile PBS, pH 7.4. Normally 5 % - 8% trehalose is added as protectants before lyophilization. Please see Certificate of Analysis for specific instructions of reconstitution.
Storage & Shipping	Store at -20°C to -80°C for 12 months in lyophilized form. After reconstitution, if not intended for use within a month, aliquot and store at -80°C (Avoid repeated freezing and thawing). Lyophilized proteins are shipped at ambient temperature.
Background	This gene encodes a membrane protein; which functions as a receptor for Epstein-Barr virus (EBV) binding on B and T lymphocytes. Genetic variations in this gene are associated with susceptibility to systemic lupus erythematosus type 9 (SLEB9). Alternatively spliced transcript variants encoding different isoforms have been found for this gene.
Usage	Research use only
Conjugate	Unconjugated
DIMA Disclaimer	All DIMA recombinant antibodies are genuinely generated by DIMA Biotech. They are all under patent application. Any protein sequencing or reverse engineering attempt is prohibited. We are actively scrutinizing all patent application to ensure no IP infringement.



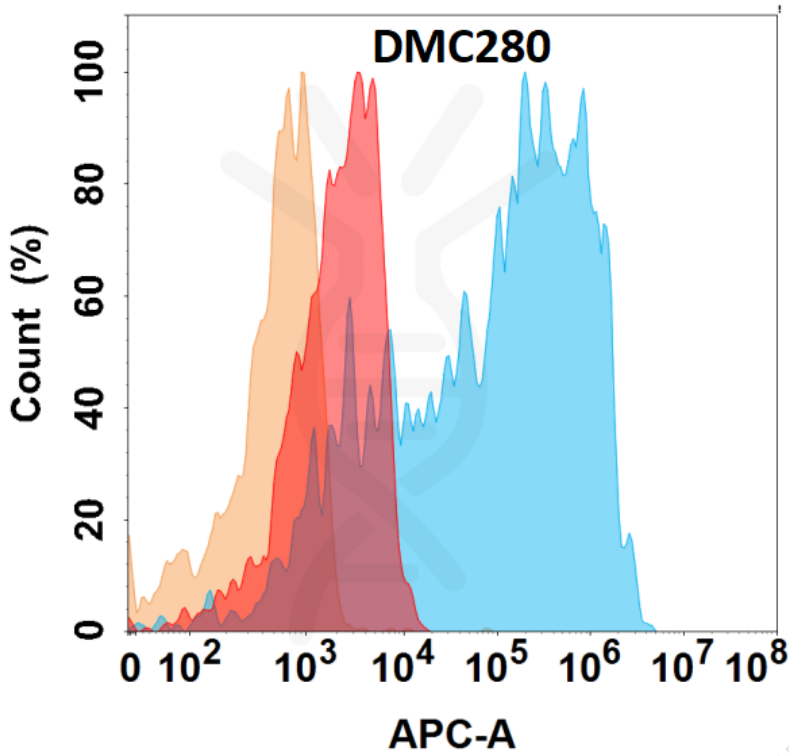


Figure 1. Flow cytometry analysis with Anti-CD21 (DMC280) on Expi293 cells transfected with human CD21 (Blue histogram) or Expi293 transfected with irrelevant protein (Red histogram), and Isotype antibody on Expi293 transfected with irrelevant protein (Orange histogram).

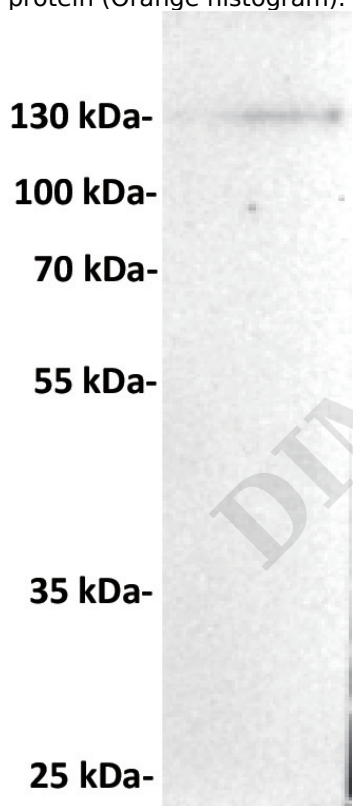


Figure 2. Anti-CD21 antibody (SKU# DMC100280) at 1/1000 dilution

Lane : RAJ1, whole cell lysate

Secondary : Goat Anti-Rabbit IgG H&L (HRP) at 1/5000 dilution

Predicted band size: 113 kDa
Observed band size: 113 kDa
Biotechnology B7, Biolake No.666
Gaoxin Road, Wuhan, Hubei, China
Telephone: +1 2409940618(USA)
/+86-18062749453(China)
/+86-400-006-0995(China)

Email: info@dimabio.com
Website: www.dimabio.com



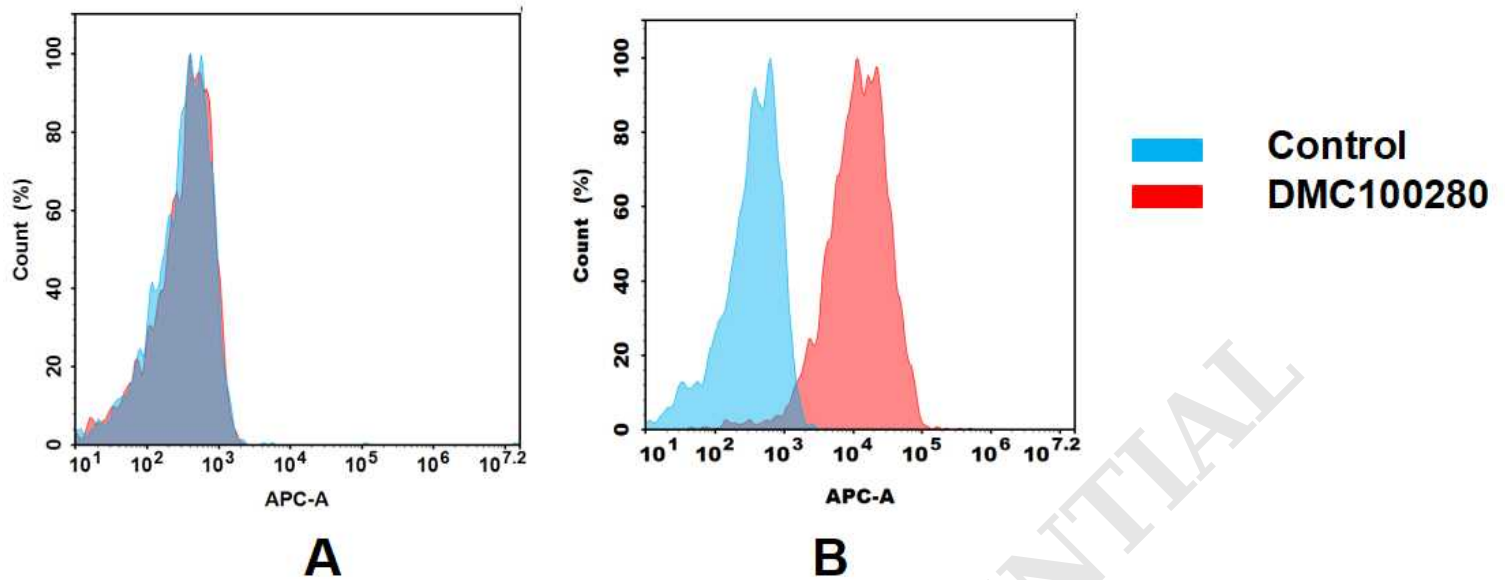


Figure 3. Flow cytometry analysis of antigen binding of anti-human CD21 mAb(DMC100280).

(A) DMC100280 does not bind to Jurkat cells that do not express CD21.

(B) A clear peak shift of DMC100280 was seen compared to the control when incubated with CD21-expressing Raji cells, indicating strong binding of DMC100280 to CD21. Antibodies were incubated at 10 µg/mL.

DIMABIO CONFIDENTIAL

