

PRODUCT INFORMATION

Clone ID	DMC423
Target	CD2
Synonyms	LFA-2; SRBC; T11
Host Species	Rabbit
Description	Anti-CD2 antibody(DMC423); IgG1 Chimeric mAb
Delivery	In Stock
Uniprot ID	P06729
IgG type	Rabbit/Human Fc chimeric IgG1
Clonality	Monoclonal
Reactivity	Human
Applications	Flow Cyt
Recommended Dilutions	Flow Cyt 1:100
Purification	Purified from cell culture supernatant by affinity chromatography
Formulation & Reconstitution	Lyophilized from sterile PBS, pH 7.4. Normally 5 % - 8% trehalose is added as protectants before lyophilization. Please see Certificate of Analysis for specific instructions of reconstitution.
Storage&Shipping	Store at -20°C to -80°C for 12 months in lyophilized form. After reconstitution, if not intended for use within a month, aliquot and store at -80°C (Avoid repeated freezing and thawing). Lyophilized proteins are shipped at ambient temperature.
Background	The protein encoded by this gene is a surface antigen found on all peripheral blood T-cells. The encoded protein interacts with LFA3 (CD58) on antigen presenting cells to optimize immune recognition. A locus control region (LCR) has been found in the 3' flanking sequence of this gene.
Usage	Research use only
Conjugate	Unconjugated
DIMA Disclaimer	All DIMA recombinant antibodies are genuinely generated by DIMA Biotech. They are all under patent application. Any protein sequencing or reverse engineering attempt is prohibited. We are actively scr



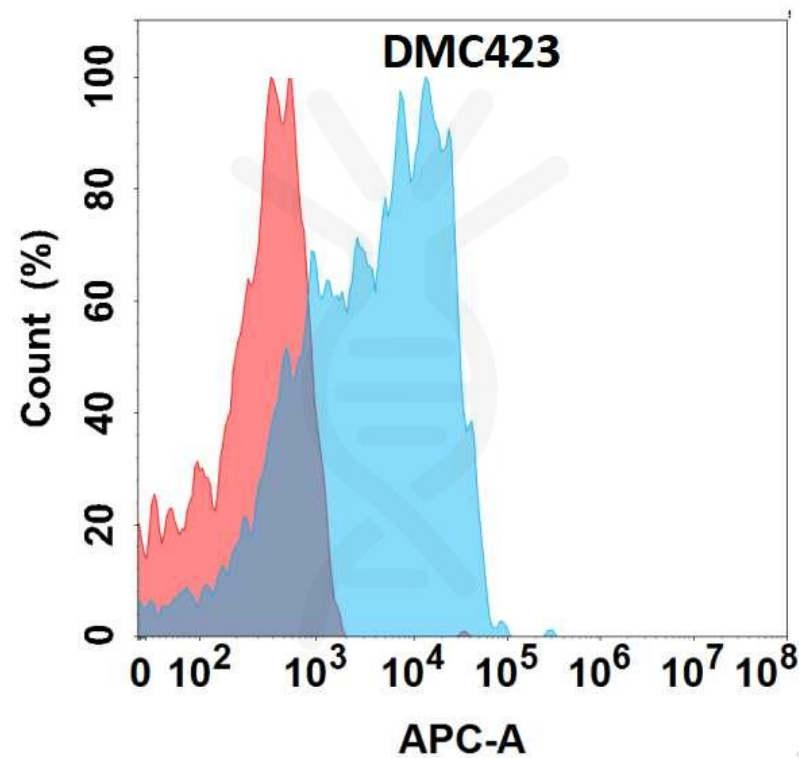


Figure 1. Flow cytometry analysis with Anti-CD2 (DMC423) on HEK293 cells transfected with human CD2 (Blue histogram) or HEK293 transfected with irrelevant protein (Red histogram).

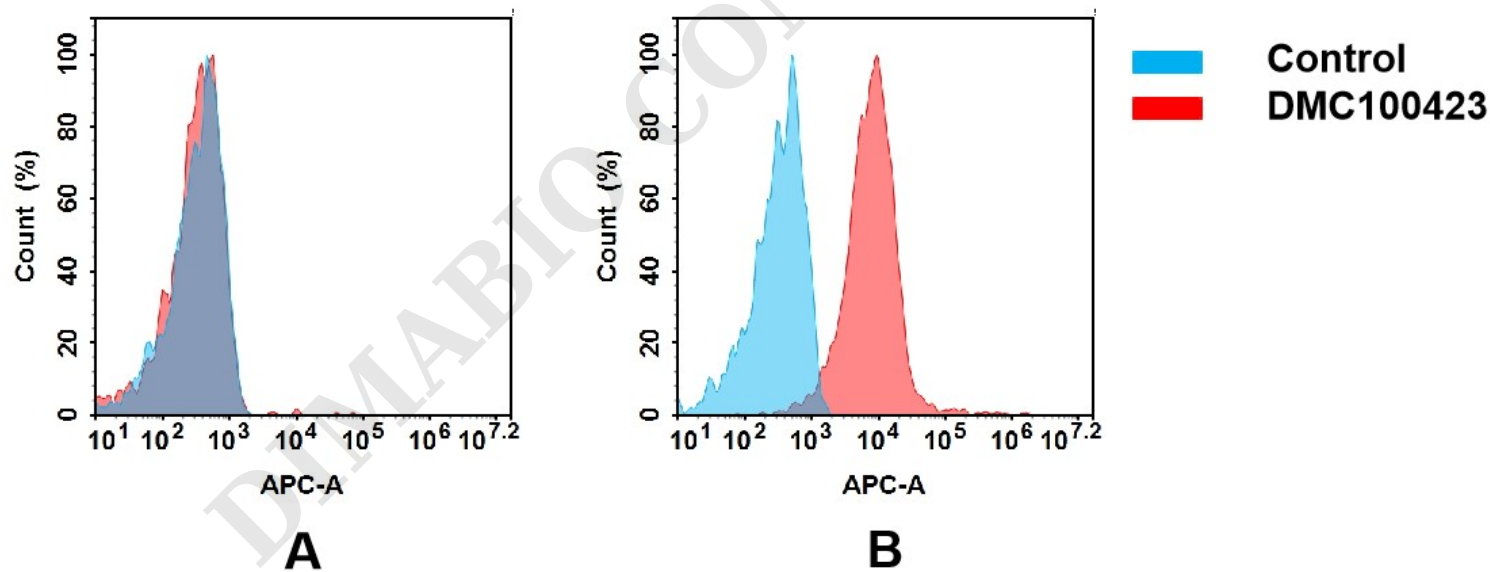


Figure 2. Flow cytometry analysis of antigen binding of anti-human CD2 mAb(DMC100423).

(A) DMC100423 does not bind to 293T cells that do not express CD2.
(B) A clear peak shift of DMC100423 was seen compared to the control when incubated with CD2-expressing Jurkat cells, indicating strong binding of DMC100423 to CD2. Antibodies were incubated at 10 µg/mL.

