

PRODUCT INFORMATION

Common Name	MEDI-551,Medi-551
Conjugate	Unconjugated
Synonyms	CD19;4;VID3;GC12802
Applications	ELISA; Flow Cyt
Recommended Dilutions	ELISA 1:5000-10000; Flow Cyt 1:100
Formulation & Reconstitution	Lyophilized from sterile PBS, pH 7.4. Normally 5 % - 8% trehalose is added as protectants before lyophilization. Please see Certificate of Analysis for specific instructions of reconstitution.
Host Species	Humanized
IgG type	Human IgG1 – kappa
Reactivity	Human
Target	CD19
Uniprot ID	P15391
Description	Anti-CD19 (inebilizumab biosimilar)mAb
Delivery	In Stock
Storage & Shipping	Store at -20°C to -80°C for 12 months in lyophilized form. After reconstitution, if not intended for use within a month, aliquot and store at -80°C (Avoid repeated freezing and thawing). Lyophilized proteins are shipped at ambient temperature.
Background	Research grade biosimilar. Not for use in therapeutic or diagnostic procedures for humans or animals.
Usage	Research use only
DIMA Disclaimer	All DIMA recombinant antibodies are genuinely generated by DIMA Biotech. They are all under patent application. Any protein sequencing or reverse engineering attempt is prohibited. We are actively scrutinizing all patent application to ensure no IP infringement.



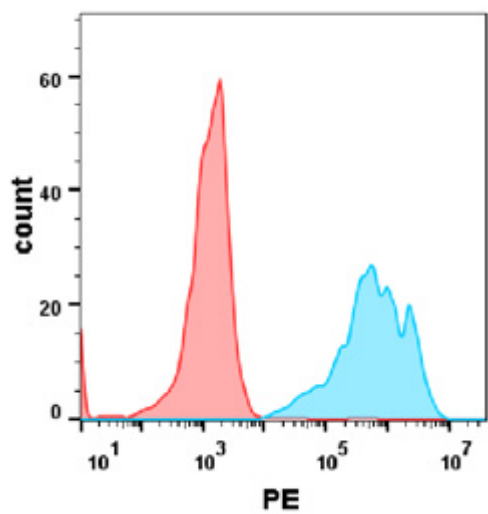


Figure 1. Flow cytometry analysis with Anti-CD19 mAb 1 µg/ml (inebilizumab) on Expi293 cells transfected with human CD19 (Blue histogram) or Expi293 transfected with irrelevant protein(Red histogram).

Anti-CD19 (inebilizumab biosimilar)mAb ELISA
0.2 µg of Goat anti-Mouse IgG tagged protein per well

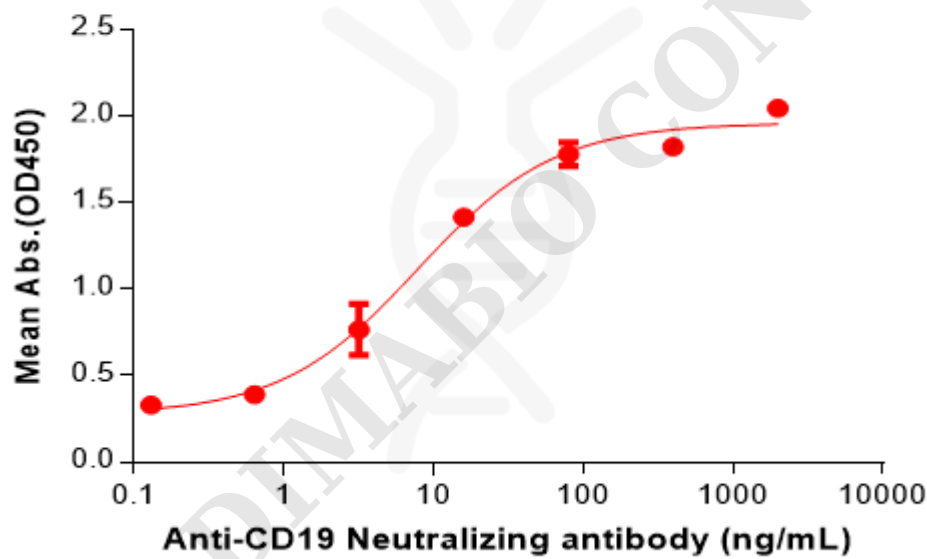


Figure 2. ELISA plate pre-coated by 2 µg/mL (100 µL/well) Human CD19 Protein, mFc Tag (PME100781) can bind Anti-CD19 (inebilizumab biosimilar) mAb (BME100051) in a linear range of 0.64–16 ng/mL.

