

PRODUCT INFORMATION

Clone ID	DM176
Target	CD10
Synonyms	MME;CALLA;CD10;DKFZp686O16152;MGC126681;MGC126707;NEP;SFE;Neprilysin
Host Species	Rabbit
Description	Anti-CD10 antibody(DM176); Rabbit mAb
Delivery	In Stock
Uniprot ID	P08473
IgG type	Rabbit IgG
Clonality	Monoclonal
Reactivity	Human
Applications	ELISA; Flow Cyt
Recommended Dilutions	ELISA 1:5000-10000; Flow Cyt 1:100
Purification	Purified from cell culture supernatant by affinity chromatography
Formulation & Reconstitution	Lyophilized from sterile PBS, pH 7.4. Normally 5 % - 8% trehalose is added as protectants before lyophilization. Please see Certificate of Analysis for specific instructions of reconstitution.
Storage&Shipping	Store at -20°C to -80°C for 12 months in lyophilized form. After reconstitution, if not intended for use within a month, aliquot and store at -80°C (Avoid repeated freezing and thawing). Lyophilized proteins are shipped at ambient temperature.
Background	The protein encoded by this gene is a type II transmembrane glycoprotein and a common acute lymphocytic leukemia antigen that is an important cell surface marker in the diagnosis of human acute lymphocytic leukemia (ALL). The encoded protein is present on leukemic cells of pre-B phenotype; which represent 85% of cases of ALL. This protein is not restricted to leukemic cells; however, and is found on a variety of normal tissues. The protein is a neutral endopeptidase that cleaves peptides at the amino side of hydrophobic residues and inactivates several peptide hormones including glucagon; enkephalins; substance P; neurotensin; oxytocin; and bradykinin.
Usage	Research use only
Conjugate	Unconjugated
DIMA Disclaimer	All DIMA recombinant antibodies are genuinely generated by DIMA Biotech. They are all under patent application. Any protein sequencing or reverse engineering attempt is prohibited. We are actively scr

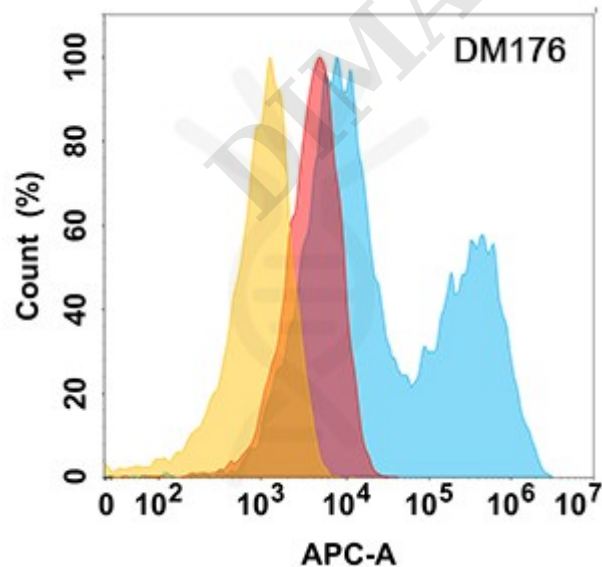


Figure 1. CD10 protein is highly expressed on the surface of HEK293 cell membrane. Flow cytometry analysis with Anti-CD10 (DM176) on HEK293 cells transfected with human CD10 (Blue histogram) or HEK293 transfected with irrelevant protein (Red histogram) and Isotype antibody on HEK293 transfected with irrelevant protein (Orange histogram).  
Address: Wuhan Institute of Biotechnology B7, Biolake No.666  
Gaoxin Road, Wuhan, Hubei, China  
Telephone: +1 2409940618(USA)  
/+86-18062749453(China)  
/+86-400-006-0995(China)

Email: [info@dimabio.com](mailto:info@dimabio.com)  
Website: [www.dimabio.com](http://www.dimabio.com)



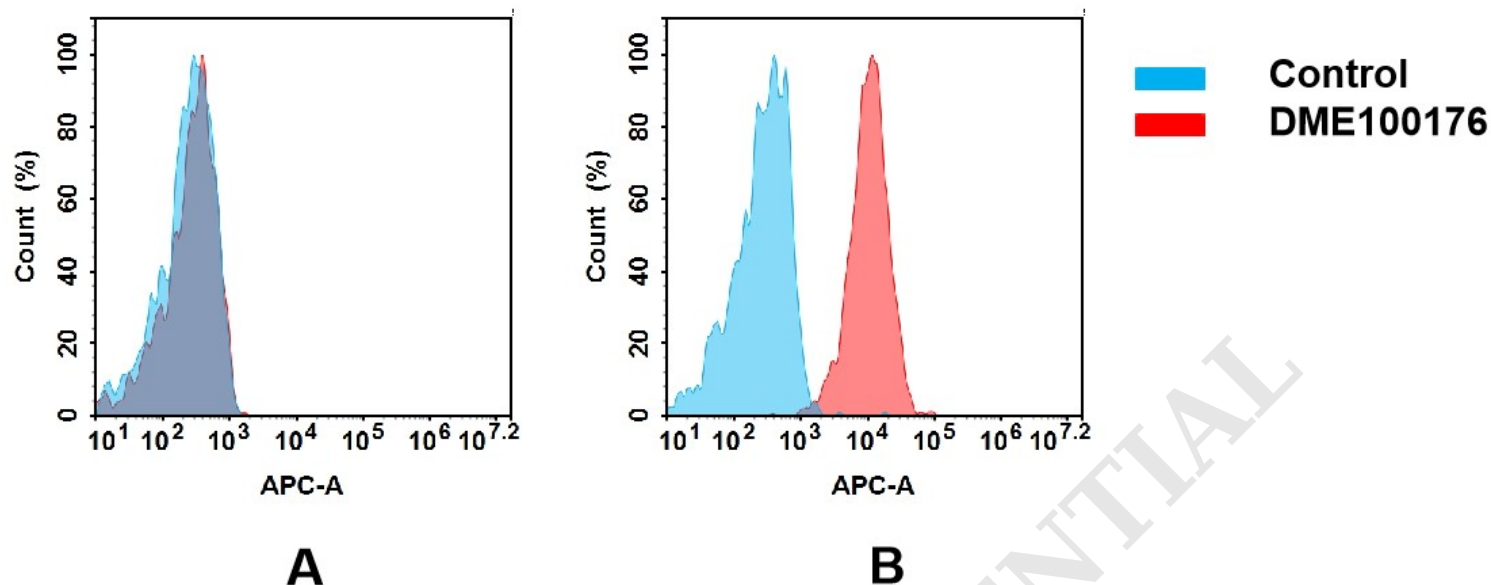


Figure 2. Flow cytometry analysis of antigen binding of rabbit anti-human CD10 mAb(DME100176).

(A) DME100176 does not bind to 293T cells that do not express CD10.

(B) A clear peak shift of DME100176 was seen compared to the control when incubated with CD10-expressing Raji cells, indicating strong binding of DME100176 to CD10. Antibodies were incubated at 5  $\mu$ g/mL.

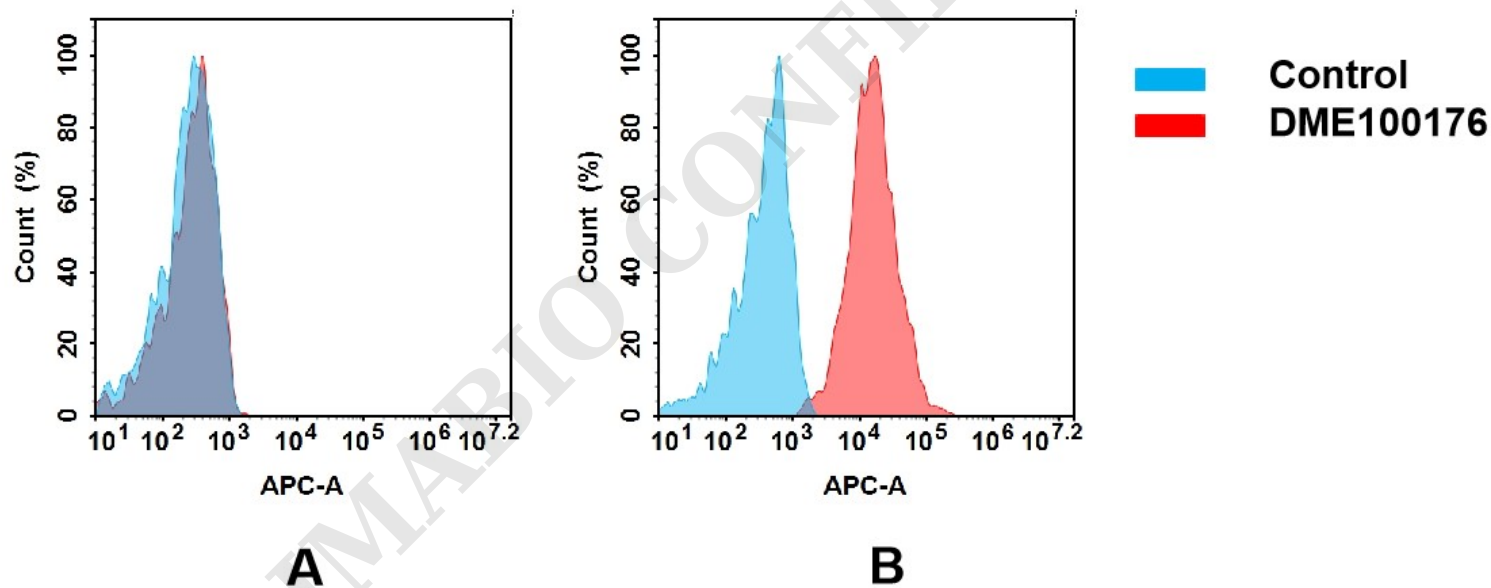


Figure 3. Flow cytometry analysis of antigen binding of rabbit anti-human CD10 mAb(DME100176).

(A) DME100176 does not bind to 293T cells that do not express CD10.

(B) A clear peak shift of DME100176 was seen compared to the control when incubated with CD10-expressing HT55 cells, indicating strong binding of DME100176 to CD10. Antibodies were incubated at 5  $\mu$ g/mL.

