

PRODUCT INFORMATION

Common Name	Shionogi Inc.(10A11)
Conjugate	Unconjugated
Synonyms	CC-CKR-8;CCR-8;CDw198;CKRL1;CMKBR8;CMKBRL2;CY6;GPRCY6;TER1
Applications	ELISA, Flow Cyt
Recommended Dilutions	ELISA 1:5000-10000, Flow Cyt 1:100
Formulation & Reconstitution	Lyophilized from sterile PBS, pH 7.4. Normally 5 % – 8% trehalose is added as protectants before lyophilization. Please see Certificate of Analysis for specific instructions.
Host Species	Humanized
IgG type	Human IgG1 – kappa
Reactivity	Human
Target	CCR8
Uniprot ID	P51685
Description	Anti-CCR8(10A11) mAb
Delivery	In Stock
Storage & Shipping	Store at -20°C to -80°C for 12 months in lyophilized form. After reconstitution, if not intended for use within a month, aliquot and store at -80°C (Avoid repeated freezing and thawing). Lyophilized proteins are shipped at ambient temperature.
Background	Research grade biosimilar. Not for use in therapeutic or diagnostic procedures for humans or animals.
Usage	Research use only

Human CCR8, hFc Tagged protein ELISA

0.1 µg Human CCR8, hFc Tagged protein per well

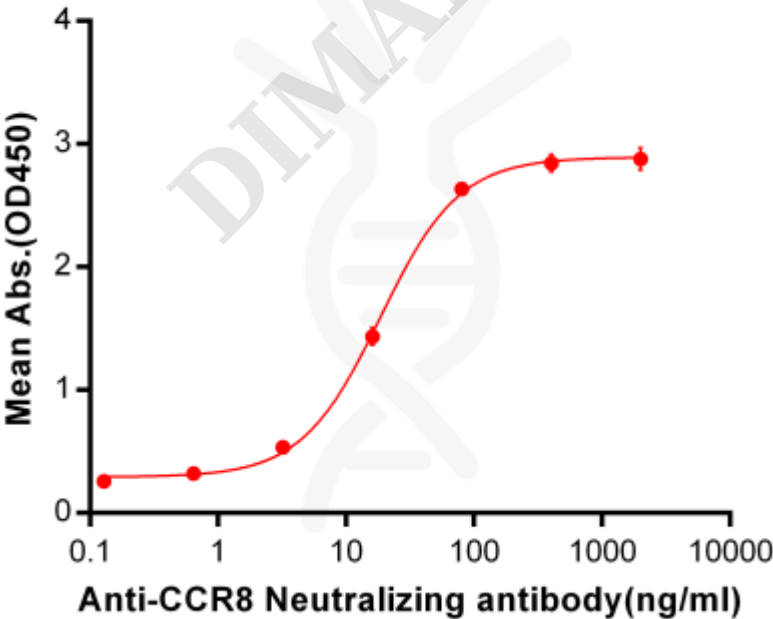


Figure 1. ELISA plate pre-coated by 1μg/ml (100μL/well) Human CCR8, hFc Tag (PME101091) can bind Anti-CCR8 Neutralizing antibody BME100063 in a linear range of 3.2-80 ng/ml. In order to specifically detect BME100063, mouse anti-human Fab-specific antibody was used as detection antibody.

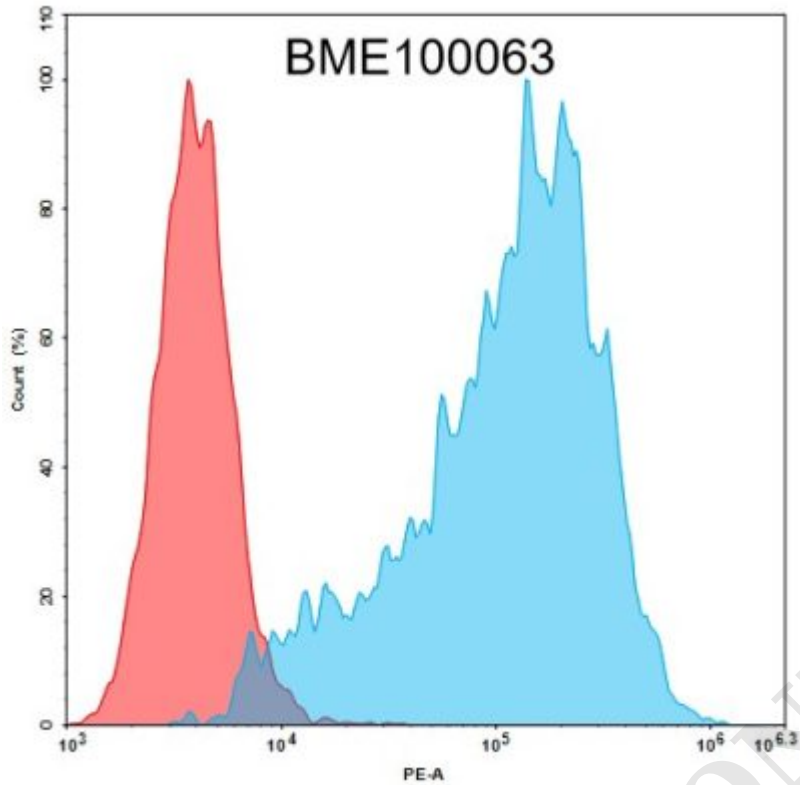


Figure 2. Flow cytometry analysis with 1 ug/ml Anti-CCR8 neutralizing antibody on 293T-CCR8 (293T cells transduced with gene for full length CCR8) Human Cell Line(Red histogram) or 293T Cell Line (Blue histogram).

