

PRODUCT INFORMATION

| | |
|------------------------------|---|
| Common Name | MLN-1202, MLN1202, anti-CCR2, hu1D9 |
| Conjugate | Unconjugated |
| Synonyms | CC-CKR-2;CCR2A;CCR2B;CD192;CKR2;CKR2A;CKR2B;CMKBR2;MCP-1-R |
| Applications | Flow Cyt |
| Recommended Dilutions | Flow Cyt 1:100 |
| Formulation & Reconstitution | Lyophilized from sterile PBS, pH 7.4. Normally 5 % – 8% trehalose is added as protectants before lyophilization. Please see Certificate of Analysis for specific instructions of reconstitution. |
| Host Species | Humanized |
| IgG type | Human IgG1 – kappa |
| Reactivity | Human |
| Target | CCR2 |
| Uniprot ID | P41597 |
| Description | Anti-CCR2(plozalizumab biosimilar) mAb |
| Delivery | In Stock |
| Storage&Shipping | Store at -20°C to -80°C for 12 months in lyophilized form. After reconstitution, if not intended for use within a month, aliquot and store at -80°C (Avoid repeated freezing and thawing). Lyophilized proteins are shipped at ambient temperature. |
| Background | Research grade biosimilar. Not for use in therapeutic or diagnostic procedures for humans or animals. |
| Usage | Research use only |

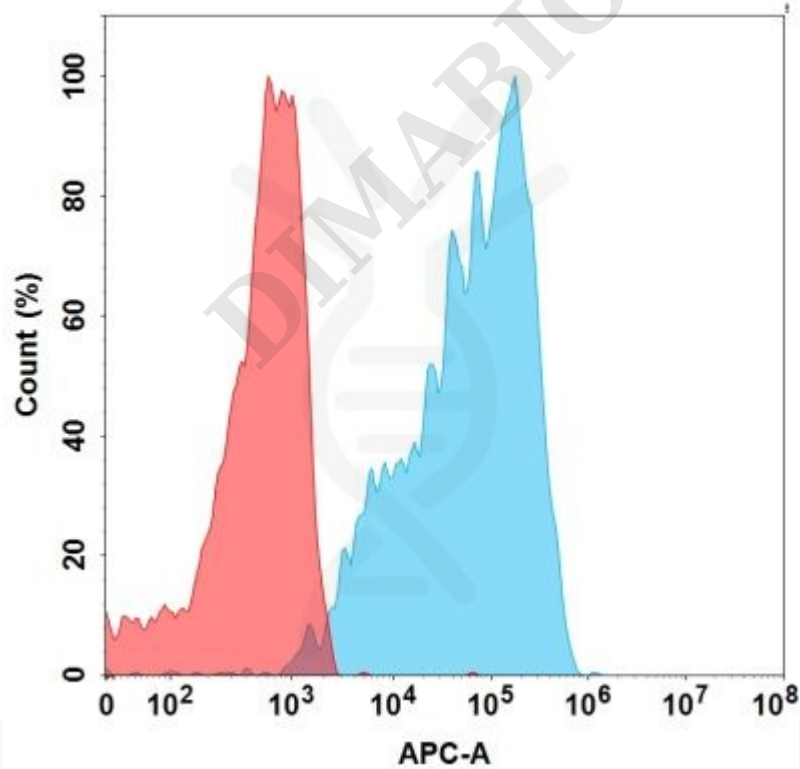


Figure 1. Flow cytometry analysis with 1 µg/mL Anti-CCR2 (plozalizumab biosimilar) mAb (BME100087) on HEK293 cells transfected with Human CCR2 protein (Blue histogram) or HEK293 transfected with irrelevant protein (Red histogram).

DIMABIO CONFIDENTIAL

