

PRODUCT INFORMATION

Clone ID	DM144
Target	CB1
Synonyms	CANN6; CB-R; CB1; CB1A; CB1K5; CB1R; CNR
Host Species	Rabbit
Description	Anti-CB1 antibody(DM144); Rabbit mAb
Delivery	In Stock
Uniprot ID	P21554
IgG type	Rabbit IgG
Clonality	Monoclonal
Reactivity	Human
Applications	ELISA; Flow Cyt
Recommended Dilutions	ELISA 1:5000-10000; Flow Cyt 1:100
Purification	Purified from cell culture supernatant by affinity chromatography
Formulation & Reconstitution	Lyophilized from sterile PBS, pH 7.4. Normally 5 % - 8% trehalose is added as protectants before lyophilization. Please see Certificate of Analysis for specific instructions of reconstitution.
Storage&Shipping	Store at -20°C to -80°C for 12 months in lyophilized form. After reconstitution, if not intended for use within a month, aliquot and store at -80°C (Avoid repeated freezing and thawing). Lyophilized proteins are shipped at ambient temperature.
Background	This gene encodes one of two cannabinoid receptors. The cannabinoids; principally delta-9-tetrahydrocannabinol and synthetic analogs; are psychoactive ingredients of marijuana. The cannabinoid receptors are members of the guanine-nucleotide-binding protein (G-protein) coupled receptor family; which inhibit adenylate cyclase activity in a dose-dependent; stereoselective and pertussis toxin-sensitive manner. The two receptors have been found to be involved in the cannabinoid-induced CNS effects (including alterations in mood and cognition) experienced by users of marijuana. Multiple transcript variants encoding two different protein isoforms have been described for this gene.
Usage	Research use only
Conjugate	Unconjugated
DIMA Disclaimer	All DIMA recombinant antibodies are genuinely generated by DIMA Biotech. They are all under patent application. Any protein sequencing or reverse engineering attempt is prohibited. We are actively scr



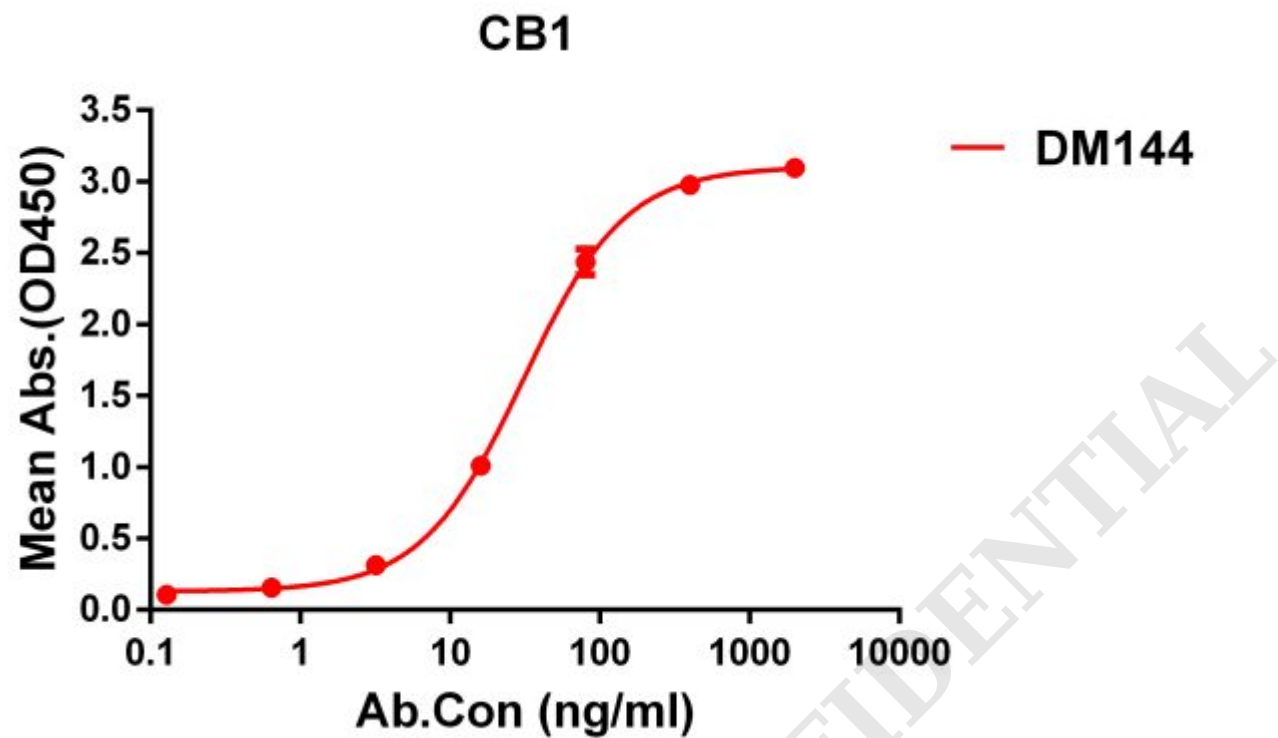


Figure 1. ELISA plate pre-coated by 1 µg/ml (100 µl/well) Human CB1 protein, hFc tagged protein ([getskuurl sku="PME100507"]) can bind Rabbit anti-CB1 monoclonal antibody(**clone: DM144**) in a linear range of 5-200 ng/ml.

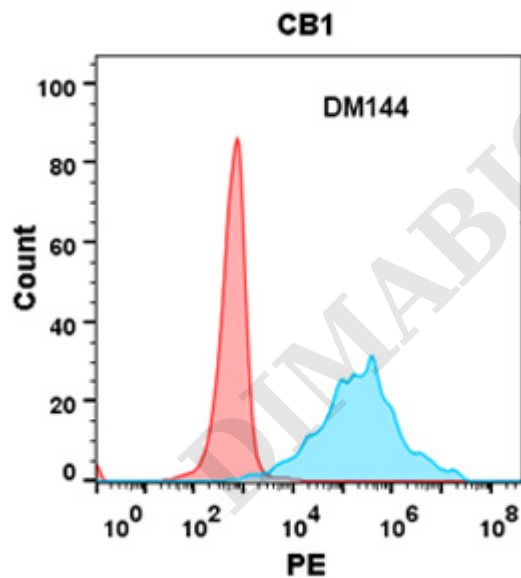


Figure 2. Flow cytometry analysis with Anti-CB1 (DM144) on HEK293 cells transfected with human CB1 (Blue histogram) or HEK293 transfected with irrelevant protein (Red histogram).

