

PRODUCT INFORMATION

Common Name	WX-G250, cG250
Conjugate	Unconjugated
Synonyms	CAIX;MN
Applications	ELISA; Flow Cyt
Recommended Dilutions	ELISA 1:5000-10000; Flow Cyt 1:100
Formulation & Reconstitution	Lyophilized from sterile PBS, pH 7.4. Normally 5 % - 8% trehalose is added as protectants before lyophilization. Please see Certificate of Analysis for specific instructions of reconstitution.
Host Species	Chimeric
IgG type	Human IgG1 - kappa
Reactivity	Human
Target	CA9
Uniprot ID	Q16790
Description	Anti-CA9 (girentuximab biosimilar) mAb
Delivery	In Stock
Storage&Shipping	Store at -20°C to -80°C for 12 months in lyophilized form. After reconstitution, if not intended for use within a month, aliquot and store at -80°C (Avoid repeated freezing and thawing). Lyophilized proteins are shipped at ambient temperature.
Background	Research grade biosimilar. Not for use in therapeutic or diagnostic procedures for humans or animals.
Usage	Research use only



Anti-CA9 (girentuximab biosimilar) mAb ELISA
0.2 µg of Human CA9, His Tagged protein per well

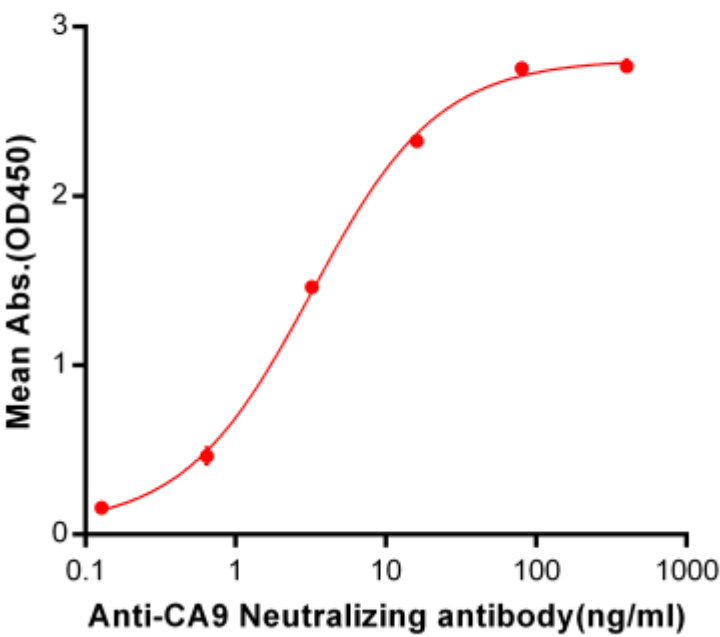


Figure 1. ELISA plate pre-coated by 2 µg/ml (100 µl/well) Human CA9, His tagged protein ([getskuurl sku="PME100152"]) can bind Anti-CA9 Neutralizing antibody (BME100040) in a linear range of 0.128-80 ng/ml.

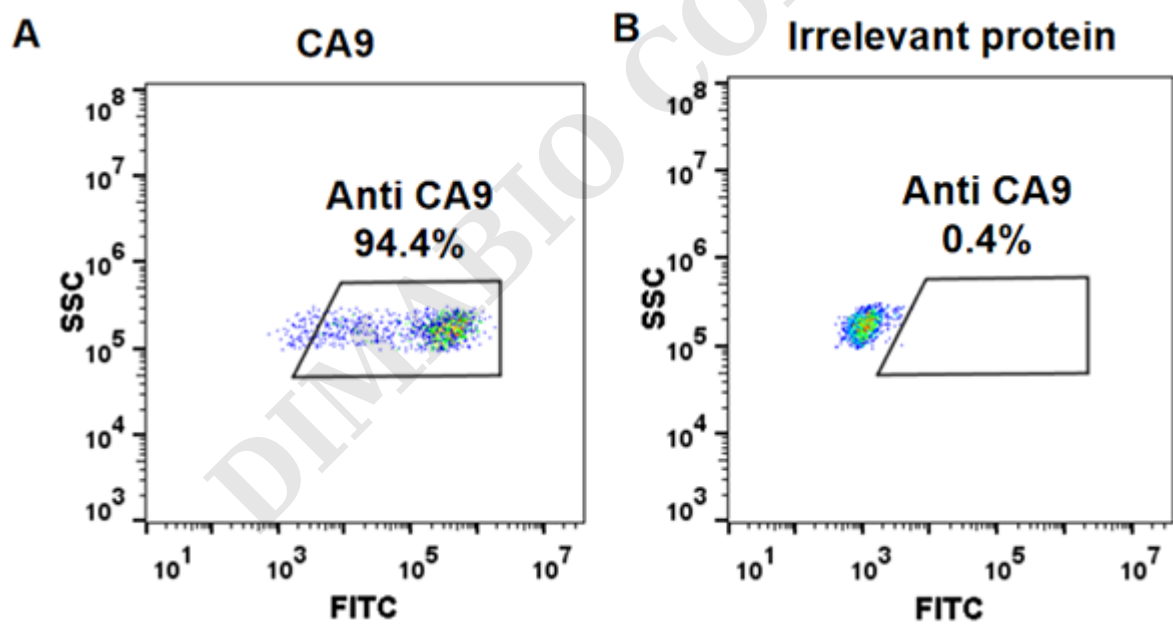


Figure 2. HEK293 cell line transfected with irrelevant protein (**B**) and human CA9 (**A**) were surface stained with Anti-CA9 mAb 1 µg/ml (girentuximab) followed by Alexa 488-conjugated anti-human IgG secondary antibody.

