

PRODUCT INFORMATION

Uniprot ID	P21730
Common Name	izastobart
Conjugate	Unconjugated
Synonyms	CD88,C5AR, C5R1
Applications	ELISA, Flow Cyt
Recommended Dilutions	ELISA 1:5000-10000, Flow Cyt 1:100
Formulation & Reconstitution	Lyophilized from sterile PBS, pH 7.4. Normally 5 % - 8% trehalose is added as protectants before lyophilization. Please see Certificate of Analysis for specific instructions of reconstitution.
Host Species	Homo sapiens
IgG type	Human IgG1(K214R,L234A,L235E,G237A,A330S,P331S) - lambda2
Reactivity	Human
Target	C5AR1
Description	Anti-C5AR1(izastobart biosimilar) mAb
Delivery	In Stock
Storage&Shipping	Store at -20°C to -80°C for 12 months in lyophilized form. After reconstitution, if not intended for use within a month, aliquot and store at -80°C (Avoid repeated freezing and thawing). Lyophilized antibodies are shipped at ambient temperature.
Background	Research grade biosimilar. Not for use in therapeutic or diagnostic procedures for humans or animals.
Usage	Research use only



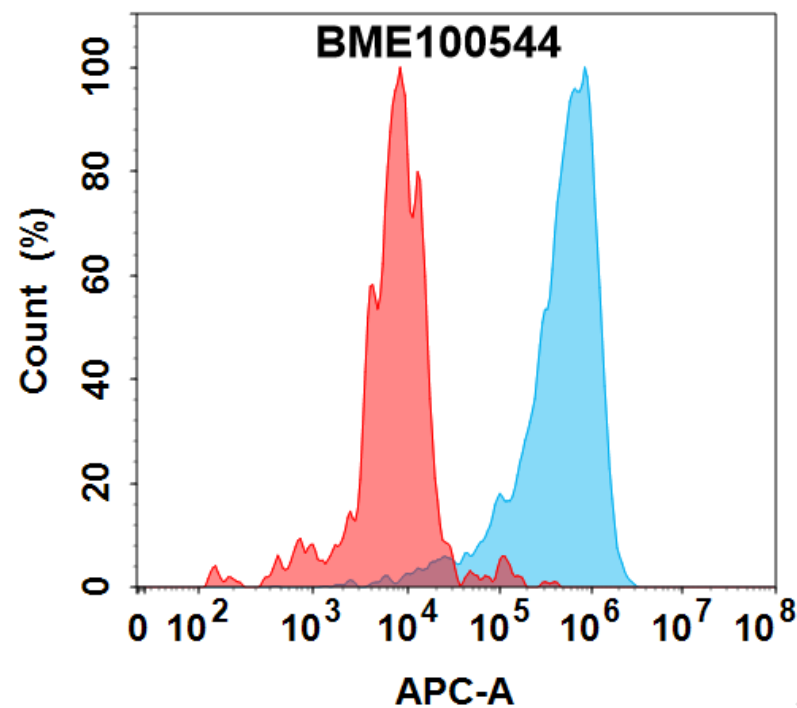


Figure 1. Flow cytometry analysis with 7.5 µg/mL Anti-C5AR1(izastobart biosimilar) mAb (BME100544) on HEK293 cells transfected with Human C5AR1 protein (Blue histogram) or HEK293 transfected with irrelevant protein (Red histogram).

Anti-C5AR1(izastobart biosimilar) mAb ELISA

0.2 µg of Human C5AR1, hFc tagged protein per well

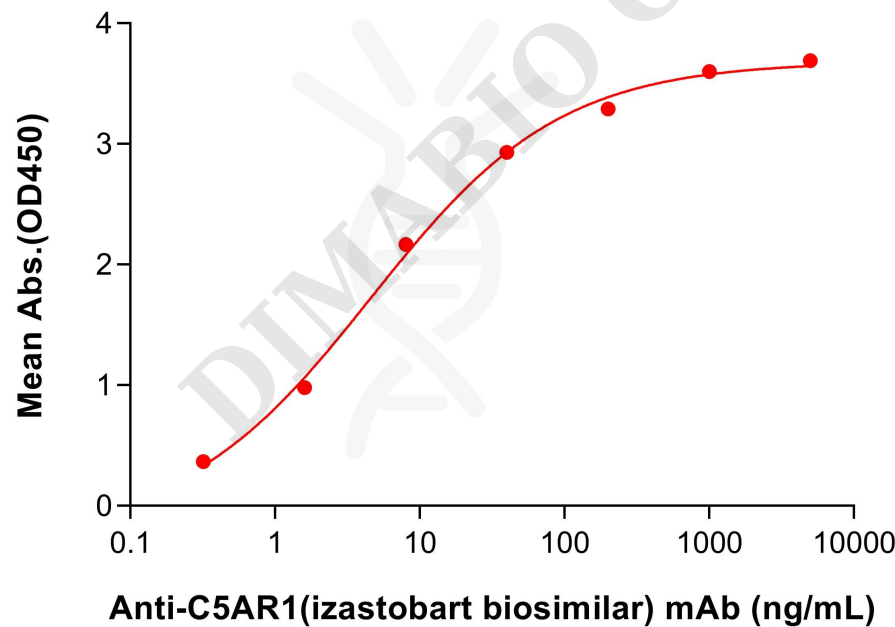


Figure 2. ELISA plate pre-coated by 2 µg/mL (100 µL/well) Human C5AR1 Protein, hFc Tag (PME100830) can bind Anti-C5AR1(izastobart biosimilar) mAb (BME100544) in a linear range of 0.32–8 ng/mL. In order to specifically detect BME100544, mouse anti-human Fab-specific antibody was used as detection antibody.



Anti-C5AR1(izastobart biosimilar) mAb ELISA

0.2 μ g of Cynomolgus C5AR1, hFc tagged protein per well

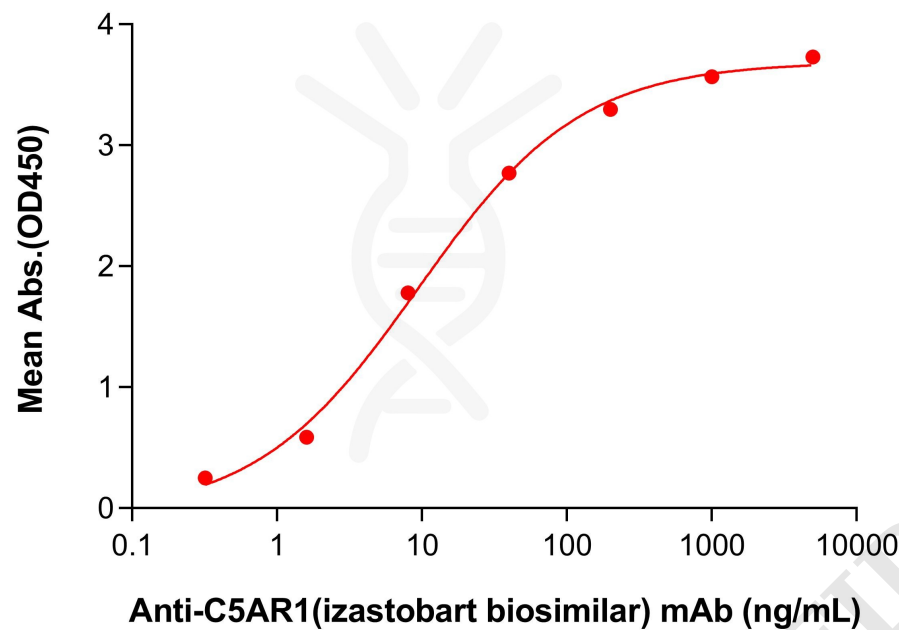


Figure 3. ELISA plate pre-coated by 2 μ g/mL (100 μ L/well) Cynomolgus C5AR1 Protein, hFc Tag (PME-C100092) can bind Anti-C5AR1(izastobart biosimilar) mAb (BME100544) in a linear range of 1.6–40 ng/mL. In order to specifically detect BME100544, mouse anti-human Fab-specific antibody was used as detection antibody.

