

PRODUCT INFORMATION

Clone ID	DM84
Target	B7-2
Synonyms	CD86; B7-2; B70; CD28LG2; LAB72; MGC34413
Host Species	Rabbit
Description	Anti-B7-2 antibody(DM84); Rabbit mAb
Delivery	In Stock
Uniprot ID	P42081
IgG type	Rabbit IgG
Clonality	Monoclonal
Reactivity	Human
Applications	ELISA; Flow Cyt
Recommended Dilutions	ELISA 1:5000-10000; Flow Cyt 1:100
Purification	Purified from cell culture supernatant by affinity chromatography
Formulation & Reconstitution	Lyophilized from sterile PBS, pH 7.4. Normally 5 % - 8% trehalose is added as protectants before lyophilization. Please see Certificate of Analysis for specific instructions of reconstitution.
Storage & Shipping	Store at -20°C to -80°C for 12 months in lyophilized form. After reconstitution, if not intended for use within a month, aliquot and store at -80°C (Avoid repeated freezing and thawing). Lyophilized proteins are shipped at ambient temperature.
Background	This gene encodes a type I membrane protein that is a member of the immunoglobulin superfamily. This protein is expressed by antigen-presenting cells; and it is the ligand for two proteins at the cell surface of T cells; CD28 antigen and cytotoxic T-lymphocyte-associated protein 4. Binding of this protein with CD28 antigen is a costimulatory signal for activation of the T-cell. Binding of this protein with cytotoxic T-lymphocyte-associated protein 4 negatively regulates T-cell activation and diminishes the immune response. Alternative splicing results in several transcript variants encoding different isoforms.
Usage	Research use only



B7-2

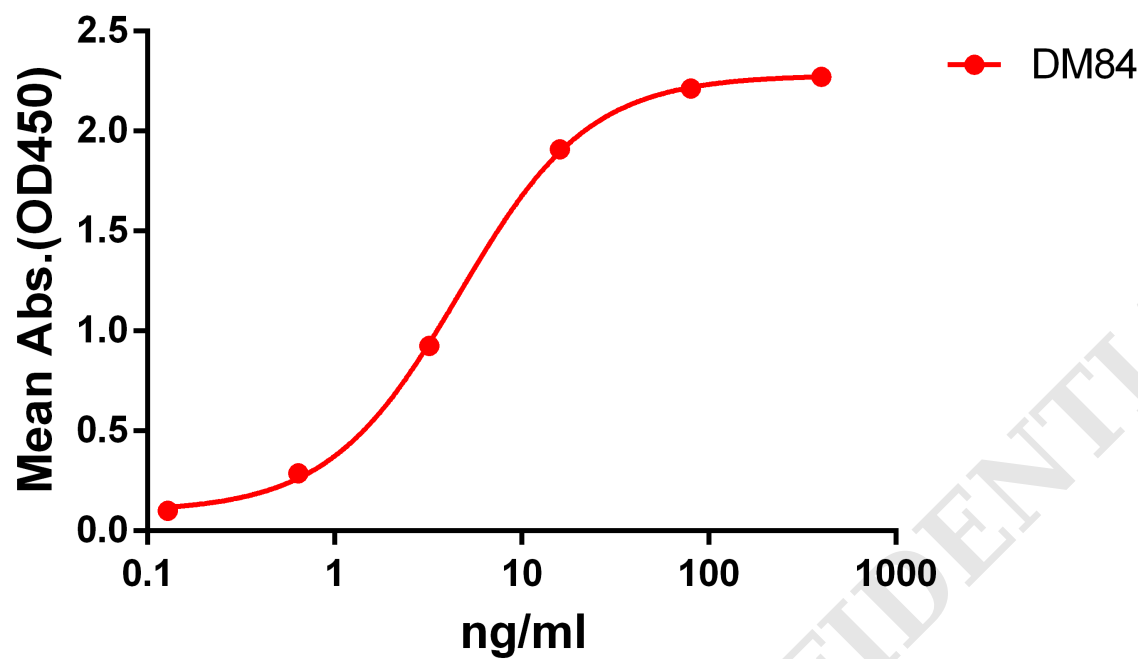


Figure 1. ELISA plate pre-coated by 2 µg/ml (100 µl/well) Human B7-2 protein, mFc-His tagged protein PME100034 can bind Rabbit anti-B7-2 monoclonal antibody (clone: DM84) in a linear range of 1-100 ng/ml.

A

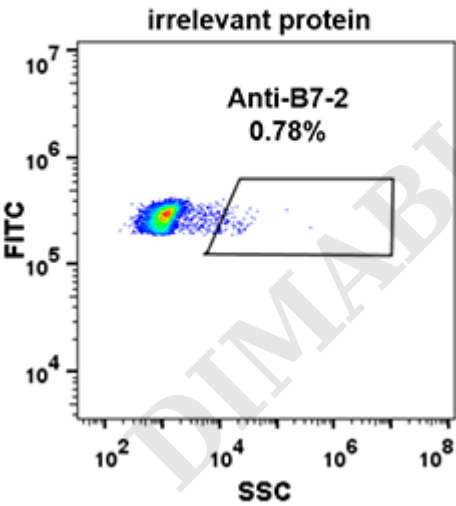


Figure 2. Expi 293 cell line transfected with irrelevant protein (A) and human B7-2 (B) were surface stained with Rabbit anti-B7-2 monoclonal antibody 1µg/ml (clone: DM84) followed by Alexa 488-conjugated anti-rabbit IgG secondary antibody.



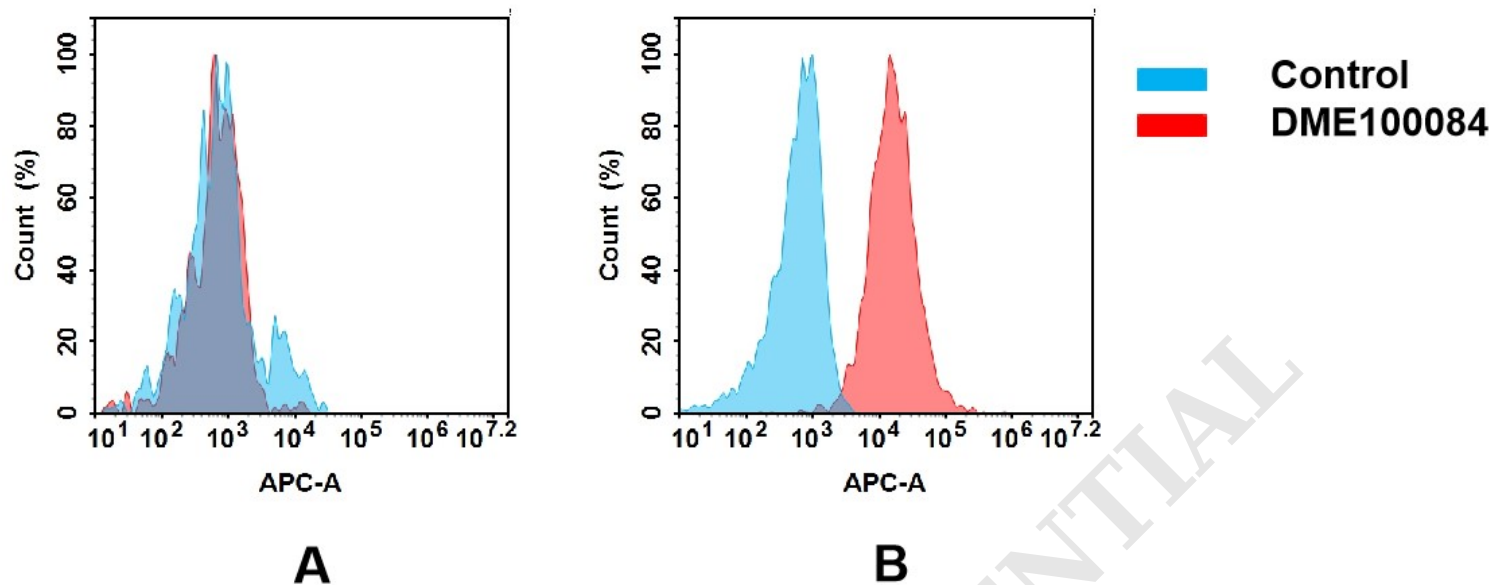


Figure 3. Flow cytometry analysis of antigen binding of rabbit anti-human B7-2 mAb(DME100084).

(A) DME100084 does not bind to 293T cells that do not express B7-2.

(B) A clear peak shift of DME100084 was seen compared to the control when incubated with B7-2-expressing Daudi cells, indicating strong binding of DME100084 to B7-2. Antibodies were incubated at 5  $\mu$ g/mL.

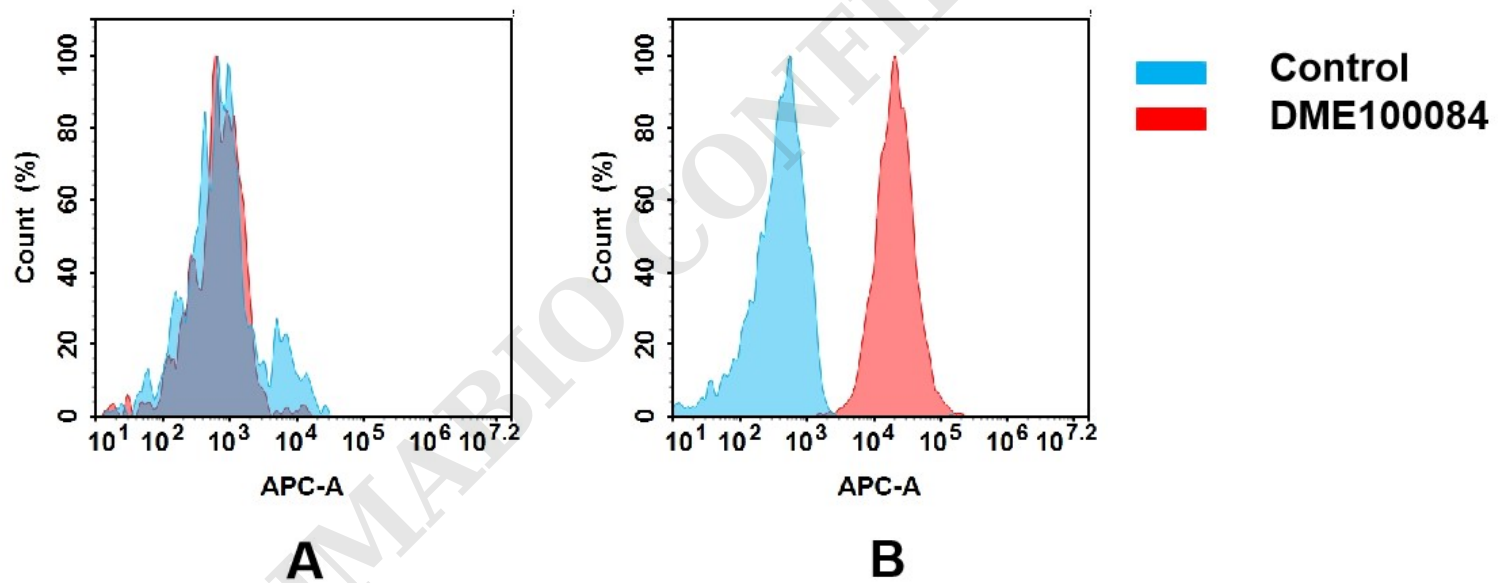


Figure 4. Flow cytometry analysis of antigen binding of rabbit anti-human B7-2 mAb(DME100084).

(A) DME100084 does not bind to 293T cells that do not express B7-2.

(B) A clear peak shift of DME100084 was seen compared to the control when incubated with B7-2-expressing Raji cells, indicating strong binding of DME100084 to B7-2. Antibodies were incubated at 5  $\mu$ g/mL.

