

PRODUCT INFORMATION

Clone ID	OTI2E2 (formerly 200)
Target	AsRed2
Synonyms	N/A
Host Species	Mouse
Description	Carrier-free (BSA/glycerol-free) Mouse monoclonal AsRed2 antibody, clone OTI2E2
Delivery	3-4week
Uniprot ID	N/A
IgG type	IgG1
Clonality	Monoclonal
Reactivity	N/A
Applications	WB
Recommended Dilutions	WB: 1:2000
Purification	N/A
Formulation & Reconstitution	Lyophilized powder (original buffer 1X PBS, pH 7.3, 8% trehalose)
Storage&Shipping	Store at -20°C.
Background	N/A
Usage	Research use only
Conjugate	Unconjugated

DIMABIO CONFIDENTIAL



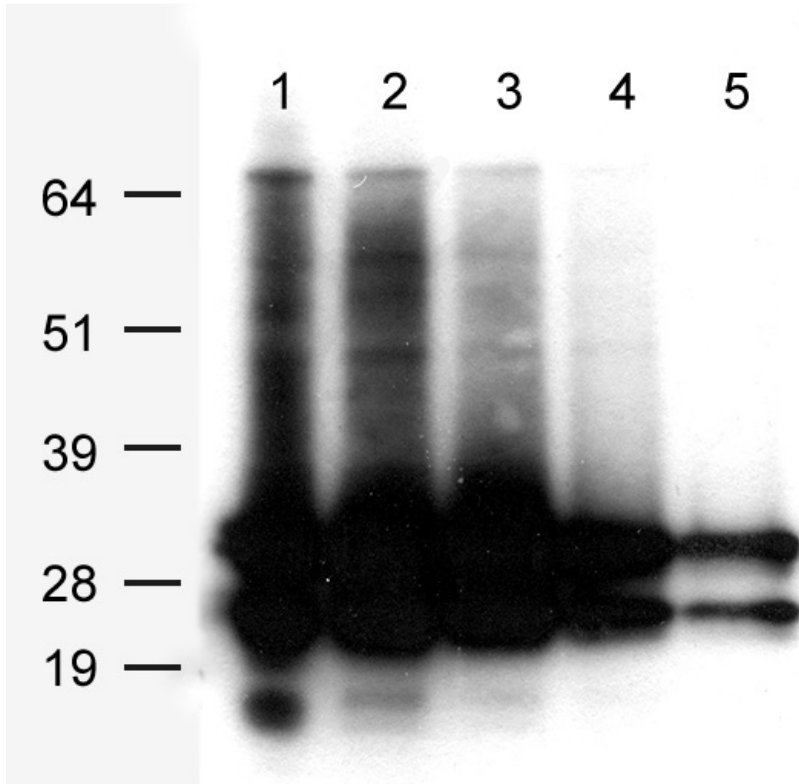


Figure 1. HEK293T cells were transfected with pCMV6-Entry-AsRed2 cDNA for 48 hours. Serial dilution of AsRed2 expression lysates were separated by SDS-PAGE and immunoblotted with anti-AsRed2 (DME900038, 1:1000) (Lane 1, 5ug; Lane 2, 2.5ug; Lane 3, 1.25ug; Lane 4, 0.625ug; Lane 5, 0.3125ug).

DIMABIO CONFIDENTIAL

