

PRODUCT INFORMATION

Common Name	3C23K, GM102
Conjugate	Unconjugated
Synonyms	AMHR;MISR2;MISRII;MRII
Applications	ELISA; Flow Cyt
Recommended Dilutions	ELISA 1:5000-10000; Flow Cyt 1:100
Formulation & Reconstitution	Lyophilized from sterile PBS, pH 7.4. Normally 5 % - 8% trehalose is added as protectants before lyophilization. Please see Certificate of Analysis for specific instructions of reconstitution.
Host Species	Humanized
IgG type	Human IgG1 - kappa
Reactivity	Human
Target	AMHR2
Uniprot ID	Q16671
Description	Anti-AMHR2(murlentamab biosimilar) mAb
Delivery	In Stock
Storage&Shipping	Store at -20°C to -80°C for 12 months in lyophilized form. After reconstitution, if not intended for use within a month, aliquot and store at -80°C (Avoid repeated freezing and thawing). Lyophilized proteins are shipped at ambient temperature.
Background	Research grade biosimilar. Not for use in therapeutic or diagnostic procedures for humans or animals.
Usage	Research use only



Anti-AMHR2 (murlentamab biosimilar) mAb ELISA
0.2 µg of Human AMHR2, hFc tagged protein per well

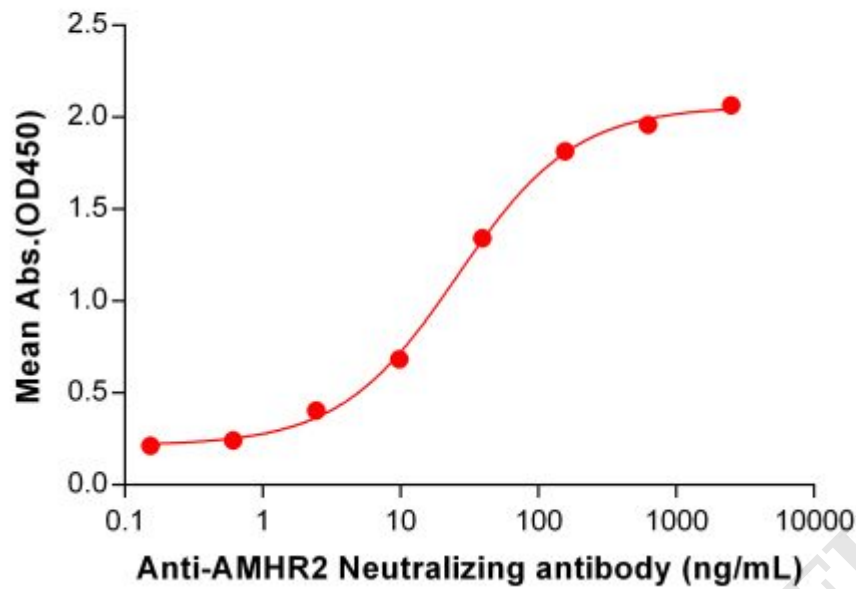


Figure 1. ELISA plate pre-coated by 2 µg/mL (100 µL/well) Human AMHR2 Protein, hFc Tag (PME100549) can bind Anti-AMHR2 Neutralizing antibody (BME100106) in a linear range of 2.44–156.25 ng/mL. In order to specifically detect BME100106, mouse anti-human Fab-specific antibody was used as detection antibody.

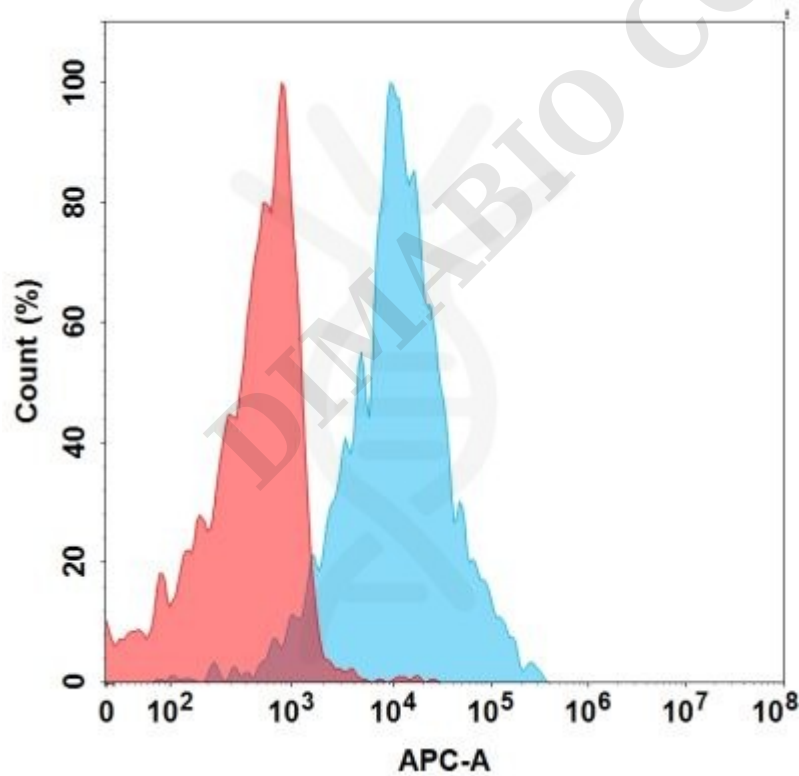


Figure 2. Flow cytometry analysis with 1 µg/mL Anti-AMHR2 (murlentamab biosimilar) mAb (BME100106) on HEK293 cells transfected with Human AMHR2 protein (Blue histogram) or HEK293 transfected with irrelevant protein (Red histogram).

